

Datasheet for ABIN3029859  
**anti-ADAM17 antibody (AA 794-823)**[Go to Product page](#)

## 2 Images

## Overview

Quantity:	0.4 mL
Target:	ADAM17
Binding Specificity:	AA 794-823
Reactivity:	Human
Host:	Rabbit
Clonality:	Polyclonal
Conjugate:	This ADAM17 antibody is un-conjugated
Application:	Western Blotting (WB), ELISA

## Product Details

Immunogen:	A portion of amino acids 794-823 from the human protein was used as the immunogen for this ADAM17 antibody.
Isotype:	Ig Fraction
Purification:	Antigen affinity purified

## Target Details

Target:	ADAM17
Alternative Name:	ADAM17 ( <a href="#">ADAM17 Products</a> )
Background:	Cleaves the membrane-bound precursor of TNF-alpha to its mature soluble form. Responsible for the proteolytical release of soluble JAM3 from endothelial cells surface. Responsible for the proteolytic release of several other cell-surface proteins, including p75 TNF-receptor, interleukin

## Target Details

1 receptor type II, p55 TNF-receptor, transforming growth factor-alpha, L-selectin, growth hormone receptor, MUC1 and the amyloid precursor protein. Acts as an activator of Notch pathway by mediating cleavage of Notch, generating the membrane-associated intermediate fragment called Notch extracellular truncation (NEXT). Plays a role in the proteolytic processing of ACE2. [UniProt]

UniProt: [P78536](#)

Pathways: [Notch Signaling](#), [EGFR Signaling Pathway](#), [Neurotrophin Signaling Pathway](#), [Response to Growth Hormone Stimulus](#)

## Application Details

Application Notes: Titration of the ADAM17 antibody may be required due to differences in protocols and secondary/substrate sensitivity.\. Western blot: 1:1000

Restrictions: For Research Use only

## Handling

Format: Liquid

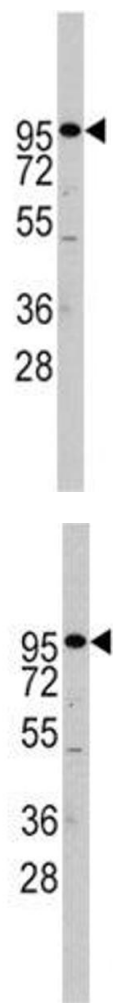
Buffer: In 1X PBS, pH 7.4, with 0.09 % sodium azide

Preservative: Sodium azide

Precaution of Use: This product contains Sodium azide: a POISONOUS AND HAZARDOUS SUBSTANCE which should be handled by trained staff only.

Storage: -20 °C

Storage Comment: Aliquot the ADAM17 antibody and store frozen at -20°C or colder. Avoid repeated freeze-thaw cycles.



Western Blotting

**Image 1.** Western blot analysis of ADAM17 antibody and Jurkat lysate

Western Blotting

**Image 2.** Western blot analysis of ADAM17 antibody and Jurkat lysate