

Datasheet for ABIN3029870
anti-ADA antibody (AA 287-314)[Go to Product page](#)

3 Images

Overview

Quantity:	0.4 mL
Target:	ADA
Binding Specificity:	AA 287-314
Reactivity:	Human
Host:	Rabbit
Clonality:	Polyclonal
Conjugate:	This ADA antibody is un-conjugated
Application:	Western Blotting (WB), ELISA, Flow Cytometry (FACS)

Product Details

Immunogen:	A portion of amino acids 287-314 from the human protein was used as the immunogen for this ADA antibody.
Isotype:	Ig Fraction
Purification:	Antigen affinity purified

Target Details

Target:	ADA
Alternative Name:	ADA (ADA Products)
Background:	Adenosine deaminase (ADA) catalyzes the hydrolytic deamination of adenosine and 2-deoxyadenosine. Plays an important role in purine metabolism and in adenosine homeostasis. Modulates signaling by extracellular adenosine, and so contributes indirectly to cellular

Target Details

signaling events. Acts as a positive regulator of T-cell coactivation, by binding DPP4. Its interaction with DPP4 regulates lymphocyte-epithelial cell adhesion. [UniProt]

UniProt: [P00813](#)

Pathways: [Regulation of G-Protein Coupled Receptor Protein Signaling](#), [Ribonucleoside Biosynthetic Process](#)

Application Details

Application Notes: Titration of the ADA antibody may be required due to differences in protocols and secondary/substrate sensitivity.\. Western blot: 1:1000,Flow Cytometry: 1:10-1:50

Restrictions: For Research Use only

Handling

Format: Liquid

Buffer: In 1X PBS, pH 7.4, with 0.09 % sodium azide

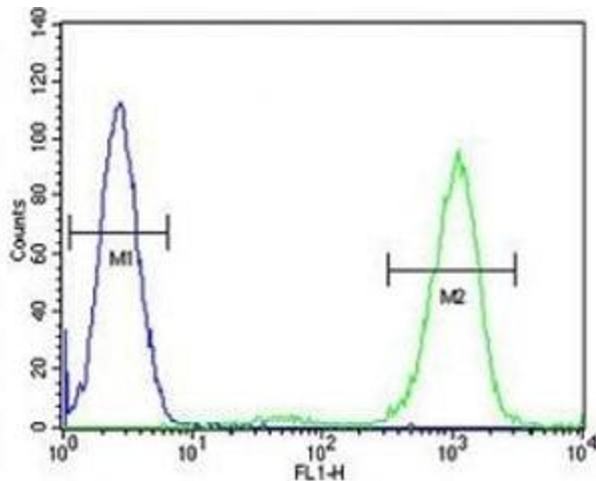
Preservative: Sodium azide

Precaution of Use: This product contains Sodium azide: a POISONOUS AND HAZARDOUS SUBSTANCE which should be handled by trained staff only.

Storage: -20 °C

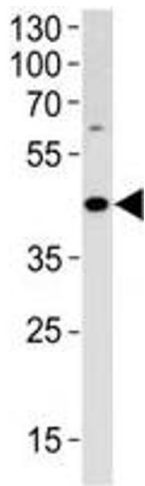
Storage Comment: Aliquot the ADA antibody and store frozen at -20°C or colder. Avoid repeated freeze-thaw cycles.

Images



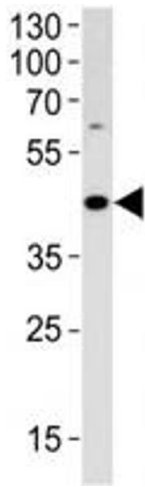
Flow Cytometry

Image 1. ADA antibody flow cytometric analysis of HL-60 cells (right histogram) compared to a negative control (left histogram). FITC-conjugated goat-anti-rabbit secondary Ab was used for the analysis.



Western Blotting

Image 2. ADA antibody western blot analysis in HL-60 lysate



Western Blotting

Image 3. ADA antibody western blot analysis in HL-60 lysate