

Datasheet for ABIN3029879

**anti-ARF5 antibody (AA 80-108)****3** Images[Go to Product page](#)

## Overview

Quantity:	0.4 mL
Target:	ARF5
Binding Specificity:	AA 80-108
Reactivity:	Human
Host:	Rabbit
Clonality:	Polyclonal
Conjugate:	This ARF5 antibody is un-conjugated
Application:	Western Blotting (WB), ELISA

## Product Details

Immunogen:	A portion of amino acids 80-108 from the human protein was used as the immunogen for this ARF5 antibody.
Isotype:	Ig Fraction
Cross-Reactivity (Details):	Expected species reactivity: Mouse, Rat
Purification:	Antigen affinity purified

## Target Details

Target:	ARF5
Alternative Name:	ARF5 ( <a href="#">ARF5 Products</a> )
Background:	ADP-ribosylation factor 5 (ARF5) is a member of the human ARF gene family. These genes

## Target Details

encode small guanine nucleotide-binding proteins that stimulate the ADP-ribosyltransferase activity of cholera toxin and play a role in vesicular trafficking and as activators of phospholipase D. The gene products include 6 ARF proteins and 11 ARF-like proteins and constitute 1 family of the RAS superfamily. The ARF proteins are categorized as class I (ARF1, ARF2, and ARF3), class II (ARF4 and ARF5) and class III (ARF6). The members of each class share a common gene organization. The ARF5 gene spans approximately 3.2kb of genomic DNA and contains six exons and five introns. [provided by RefSeq].

UniProt: [P84085](#)

## Application Details

Application Notes: Titration of the ARF5 antibody may be required due to differences in protocols and secondary/substrate sensitivity.\. Western blot: 1:1000

Restrictions: For Research Use only

## Handling

Format: Liquid

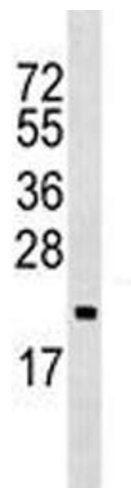
Buffer: In 1X PBS, pH 7.4, with 0.09 % sodium azide

Preservative: Sodium azide

Precaution of Use: This product contains Sodium azide: a POISONOUS AND HAZARDOUS SUBSTANCE which should be handled by trained staff only.

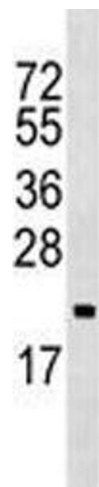
Storage: -20 °C

Storage Comment: Aliquot the ARF5 antibody and store frozen at -20°C or colder. Avoid repeated freeze-thaw cycles.



Western Blotting

**Image 1.** ARF5 antibody western blot analysis in Ramos lysate



Western Blotting

**Image 2.** ARF5 antibody western blot analysis in Ramos lysate



Western Blotting

**Image 3.** Western blot analysis of ARF5 antibody and 293 cell lysate either nontransfected (Lane 1) or transiently transfected (2) with the ARF5 gene.