

Datasheet for ABIN3029894  
**anti-ALDH1A1 antibody (AA 302-331)**[Go to Product page](#)

## 7 Images

## Overview

Quantity:	0.4 mL
Target:	ALDH1A1
Binding Specificity:	AA 302-331
Reactivity:	Human
Host:	Rabbit
Clonality:	Polyclonal
Conjugate:	This ALDH1A1 antibody is un-conjugated
Application:	Western Blotting (WB), Immunohistochemistry (IHC), ELISA, Immunofluorescence (IF), Flow Cytometry (FACS)

## Product Details

Immunogen:	A portion of amino acids 302-331 from the human protein was used as the immunogen for this ALDH1A1 antibody.
Isotype:	Ig Fraction
Cross-Reactivity (Details):	Expected species reactivity: Mouse, Primate
Purification:	Purified

## Target Details

Target:	ALDH1A1
Alternative Name:	ALDH1A1 ( <a href="#">ALDH1A1 Products</a> )

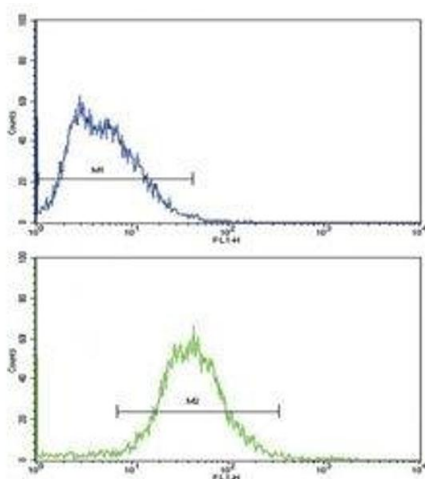
## Target Details

Background:	ALDH1A1 binds free retinal and cellular retinol-binding protein- bound retinal. Can convert/oxidize retinaldehyde to retinoic acid (By similarity). [UniProt]
UniProt:	<a href="#">P00352</a>
Pathways:	<a href="#">Dopaminergic Neurogenesis</a>

## Application Details

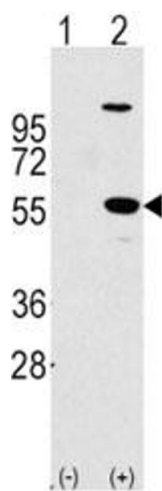
Application Notes:	Titration of the ALDH1A1 antibody may be required due to differences in protocols and secondary/substrate sensitivity.\. Western blot: 1:1000,IHC (Paraffin): 1:10-1:50,Immunofluorescence: 1:10-1:50,Flow Cytometry: 1:10-1:50
Restrictions:	For Research Use only
Handling	
Format:	Liquid
Buffer:	In 1X PBS, pH 7.4, with 0.09 % sodium azide
Preservative:	Sodium azide
Precaution of Use:	This product contains Sodium azide: a POISONOUS AND HAZARDOUS SUBSTANCE which should be handled by trained staff only.
Storage:	-20 °C
Storage Comment:	Aliquot the ALDH1A1 antibody and store frozen at -20°C or colder. Avoid repeated freeze-thaw cycles.

## Images



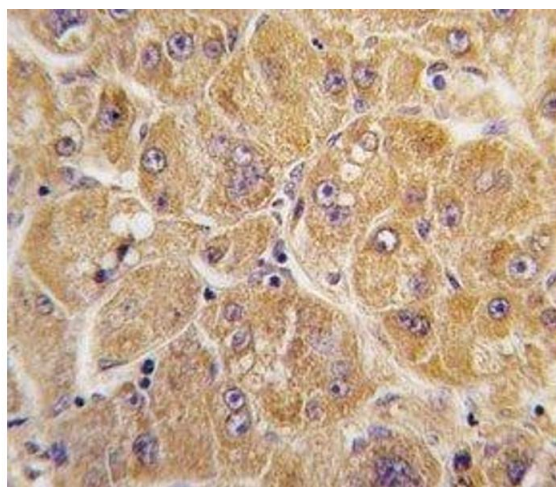
### Flow Cytometry

**Image 1.** Flow cytometric analysis of HepG2 cells using ALDH1A1 antibody (green)



#### Western Blotting

**Image 2.** Western blot analysis of ALDH1A1 antibody and 293 cell lysate (2 ug/lane) either nontransfected (Lane 1) or transiently transfected with the ALDH1A1 gene (2).



#### Immunohistochemistry

**Image 3.** IHC analysis of FFPE human hepatocarcinoma tissue stained with ALDH1A1 antibody

Please check the [product details page](#) for more images. Overall 7 images are available for ABIN3029894.