

Datasheet for ABIN3029895  
**anti-ALDH1L1 antibody (AA 717-746)**[Go to Product page](#)

## 3 Images

## Overview

Quantity:	0.4 mL
Target:	ALDH1L1
Binding Specificity:	AA 717-746
Reactivity:	Human, Mouse
Host:	Rabbit
Clonality:	Polyclonal
Conjugate:	This ALDH1L1 antibody is un-conjugated
Application:	Western Blotting (WB), Immunohistochemistry (IHC), ELISA

## Product Details

Immunogen:	A portion of amino acids 717-746 from the human protein was used as the immunogen for this ALDH1L1 antibody.
Isotype:	Ig Fraction
Purification:	Purified

## Target Details

Target:	ALDH1L1
Alternative Name:	ALDH1L1 ( <a href="#">ALDH1L1 Products</a> )
Background:	ALDH1L1 catalyzes the conversion of 10-formyltetrahydrofolate, NADP, and water to tetrahydrofolate, NADPH, and carbon dioxide. The encoded protein belongs to the aldehyde dehydrogenase family and is responsible for formate oxidation in vivo. Deficiencies in this gene

## Target Details

can result in an accumulation of formate and subsequent methanol poisoning.

UniProt: [O75891](#)

## Application Details

Application Notes: Titration of the ALDH1L1 antibody may be required due to differences in protocols and secondary/substrate sensitivity.\. Western blot: 1:1000,IHC (Paraffin): 1:10-1:50

Restrictions: For Research Use only

## Handling

Format: Liquid

Buffer: In 1X PBS, pH 7.4, with 0.09 % sodium azide

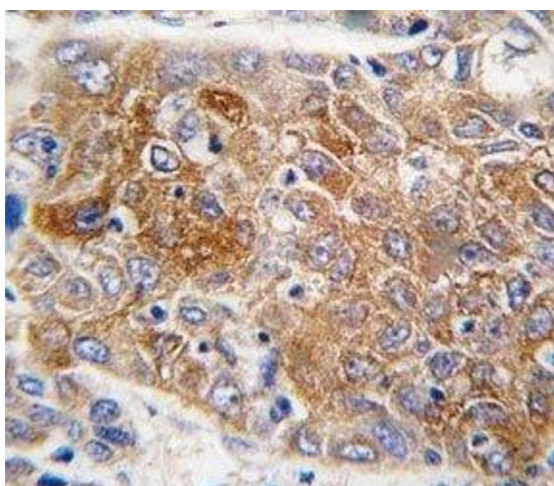
Preservative: Sodium azide

Precaution of Use: This product contains Sodium azide: a POISONOUS AND HAZARDOUS SUBSTANCE which should be handled by trained staff only.

Storage: -20 °C

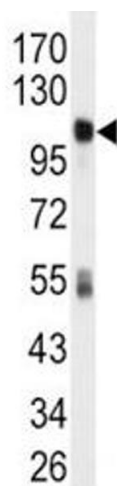
Storage Comment: Aliquot the ALDH1L1 antibody and store frozen at -20°C or colder. Avoid repeated freeze-thaw cycles.

## Images



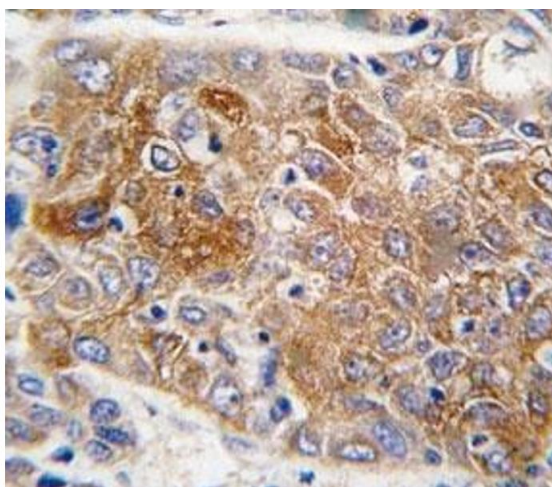
### Immunohistochemistry

**Image 1.** IHC analysis of FFPE human hepatocarcinoma tissue stained with ALDH1L1 antibody



#### Western Blotting

**Image 2.** Western blot analysis of ALDH1L1 antibody and mouse liver tissue lysate.



#### Immunohistochemistry

**Image 3.** IHC analysis of FFPE human hepatocarcinoma tissue stained with ALDH1L1 antibody