



[Go to Product page](#)

Datasheet for ABIN3029902
anti-ALDOA antibody (AA 303-331)

5 Images

Overview

Quantity:	0.4 mL
Target:	ALDOA
Binding Specificity:	AA 303-331
Reactivity:	Human, Mouse
Host:	Rabbit
Clonality:	Polyclonal
Conjugate:	This ALDOA antibody is un-conjugated
Application:	Western Blotting (WB), ELISA, Immunohistochemistry (IHC)

Product Details

Immunogen:	A portion of amino acids 303-331 from the human protein was used as the immunogen for this ALDOA antibody.
Isotype:	Ig Fraction
Cross-Reactivity (Details):	Expected species reactivity: Rabbit
Purification:	Purified

Target Details

Target:	ALDOA
Alternative Name:	ALDOA (ALDOA Products)
Background:	Aldolase A (fructose-bisphosphate aldolase) is a glycolytic enzyme that catalyzes the reversible

Target Details

conversion of fructose-1,6-bisphosphate to glyceraldehyde 3-phosphate and dihydroxyacetone phosphate. Three aldolase isozymes (A, B, and C), encoded by three different genes, are differentially expressed during development. Aldolase A is found in the developing embryo and is produced in even greater amounts in adult muscle. Aldolase A expression is repressed in adult liver, kidney and intestine and similar to aldolase C levels in brain and other nervous tissue. Aldolase A deficiency has been associated with myopathy and hemolytic anemia.

UniProt: [P04075](#)

Pathways: [Ribonucleoside Biosynthetic Process](#)

Application Details

Application Notes: Titration of the ALDOA antibody may be required due to differences in protocols and secondary/substrate sensitivity.\. Western blot: 1:1000,IHC (Paraffin): 1:10-1:50

Restrictions: For Research Use only

Handling

Format: Liquid

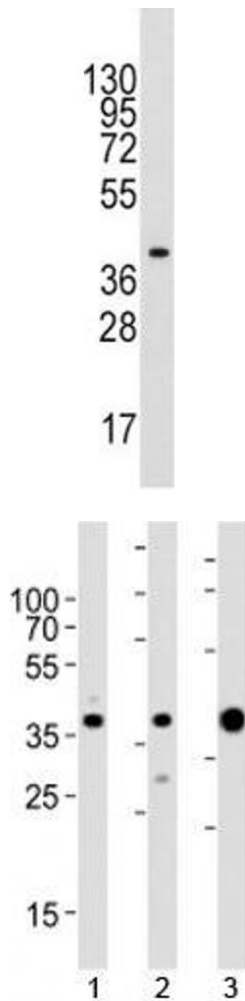
Buffer: In 1X PBS, pH 7.4, with 0.09 % sodium azide

Preservative: Sodium azide

Precaution of Use: This product contains Sodium azide: a POISONOUS AND HAZARDOUS SUBSTANCE which should be handled by trained staff only.

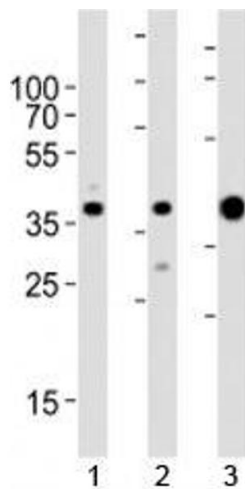
Storage: -20 °C

Storage Comment: Aliquot the ALDOA antibody and store frozen at -20°C or colder. Avoid repeated freeze-thaw cycles.



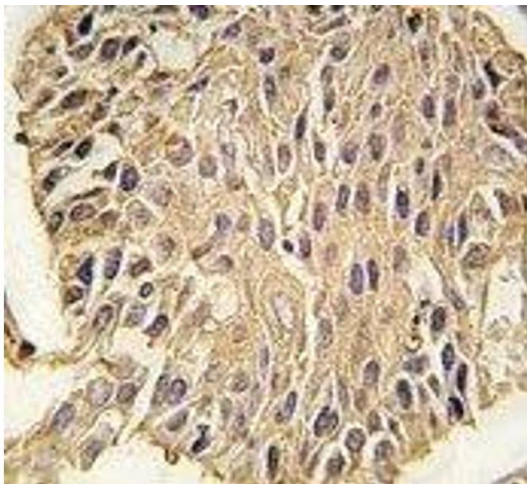
Western Blotting

Image 1. Western blot analysis of ALDOA antibody and mouse liver tissue lysate. Predicted molecular weight ~40 kDa.



Western Blotting

Image 2. Western blot analysis of lysate from 1) MCF-7, 2) HeLa cell line and 3) human skeletal muscle tissue lysate using ALDOA antibody at 1:1000. Predicted molecular weight ~40 kDa.



Immunohistochemistry

Image 3. IHC analysis of FFPE human lung carcinoma tissue stained with ALDOA antibody

Please check the [product details page](#) for more images. Overall 5 images are available for ABIN3029902.