

Datasheet for ABIN3029904

**anti-Alkaline Phosphatase antibody (AA 21-35)****3** Images[Go to Product page](#)

## Overview

Quantity:	100 µg
Target:	Alkaline Phosphatase (ALP)
Binding Specificity:	AA 21-35
Reactivity:	Human, Mouse, Rat
Host:	Rabbit
Clonality:	Polyclonal
Conjugate:	This Alkaline Phosphatase antibody is un-conjugated
Application:	Western Blotting (WB), Immunohistochemistry (Paraffin-embedded Sections) (IHC (p))

## Product Details

Immunogen:	Amino acids 21-35 (EKEKDPKYWRDQAQE) of human ALPL were used as the immunogen for this tissue-nonspecific Alkaline Phosphatase antibody.
Isotype:	IgG
Purification:	Antigen affinity

## Target Details

Target:	Alkaline Phosphatase (ALP)
Alternative Name:	Alkaline Phosphatase ( <a href="#">ALP Products</a> )
Background:	Alkaline phosphatase, tissue-nonspecific isozyme is an enzyme that in humans is encoded by the ALPL gene. There are at least four distinct but related alkaline phosphatases: intestinal, placental, placental-like, and liver/bone/kidney (tissue non-specific). The first three are located

## Target Details

together on chromosome 2 while the tissue non-specific form is located on chromosome 1. Liver/bone/kidney alkaline phosphatase, known as tissue-nonspecific, acts physiologically as a lipid-anchored phosphoethanolamine (PEA) and pyridoxal-5-prime-phosphate (PLP) ectophosphatase. Mice that lack a functional form of this enzyme show normal skeletal development. This enzyme has been linked directly to a disorder known as hypophosphatasia, a disorder that is characterized by hypercalcemia and includes skeletal defects.

UniProt: [P05186](#)

## Application Details

Application Notes: Titration of the Alkaline Phosphatase antibody may be required due to differences in protocols and secondary/substrate sensitivity.\. Western blot: 0.5-1 µg/mL,IHC (Paraffin): 0.5-1 µg/mL

Restrictions: For Research Use only

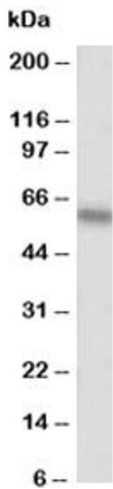
## Handling

Buffer: 0.5 mg/mL if reconstituted with 0.2 mL sterile DI water

Storage: -20 °C

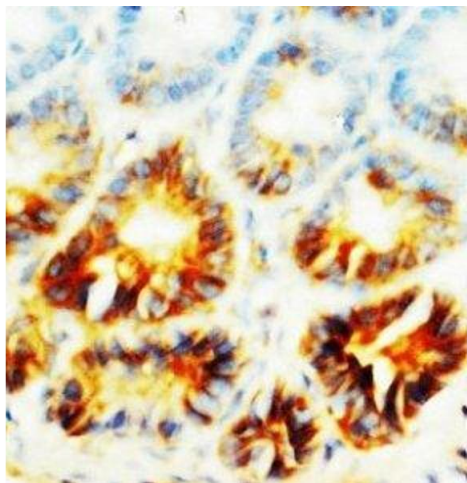
Storage Comment: The lyophilized Alkaline Phosphatase antibody can be stored at 4°C to -20°C. After reconstitution, aliquot and store at -20°C. Avoid repeated freezing and thawing.

## Images



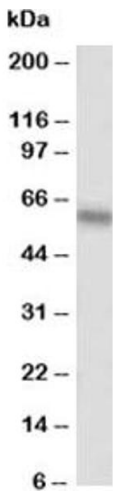
### Western Blotting

**Image 1.** Western blot testing of Alkaline Phosphatase antibody at 0.5ug/ml and HT1080 lysate



**Immunohistochemistry**

**Image 2.** IHC-P: Alkaline Phosphatase antibody testing of rat small intestine tissue



**Western Blotting**

**Image 3.** Western blot testing of Alkaline Phosphatase antibody at 0.5ug/ml and HT1080 lysate