

Datasheet for ABIN3029905

anti-Alkaline Phosphatase antibody (N-Term)[Go to Product page](#)**2** Images

Overview

| | |
|----------------------|---|
| Quantity: | 100 µg |
| Target: | Alkaline Phosphatase (ALP) |
| Binding Specificity: | N-Term |
| Reactivity: | Mouse, Rat |
| Host: | Rabbit |
| Clonality: | Polyclonal |
| Conjugate: | This Alkaline Phosphatase antibody is un-conjugated |
| Application: | Western Blotting (WB) |

Product Details

| | |
|---------------|---|
| Immunogen: | An amino acid sequence from the N-terminus of rat ALPL (FVPEKEKDPSYWRQQ) was used as the immunogen for this tissue-nonspecific Alkaline Phosphatase antibody. |
| Isotype: | IgG |
| Purification: | Antigen affinity |

Target Details

| | |
|-------------------|--|
| Target: | Alkaline Phosphatase (ALP) |
| Alternative Name: | Alkaline Phosphatase (ALP Products) |
| Background: | Alkaline phosphatase removes phosphate groups from the 5-prime end of DNA and RNA, and from proteins, at high pH . Most mammals have 4 different isozymes: placental, placental like, intestinal and non-tissue specific (found in liver, kidney and bone). Tissues with particularly high |

Target Details

concentrations of ALP include the liver, bile ducts, placenta, and bone. ALPL is the alkaline phosphatase of skin fibroblasts, the tissue-nonspecific type, and that it is active toward millimolar concentrations of the putative natural substrates phosphoethanolamine(PEA) and pyridoxal-5-prime-phosphate(PLP). ALPL gene exists in single copy in the haploid genome and is composed of 12 exons distributed over more than 50 kb. Damaged or diseased tissue releases enzymes into the blood, so serum ALP measurements can be abnormal in many conditions, including bone disease and liver disease.

UniProt: [P08289](#)

Application Details

Application Notes: The stated application concentrations are suggested starting points. Titration of the Alkaline Phosphatase antibody may be required due to differences in protocols and secondary/substrate sensitivity.\. Western blot: 0.5-1 µg/mL

Restrictions: For Research Use only

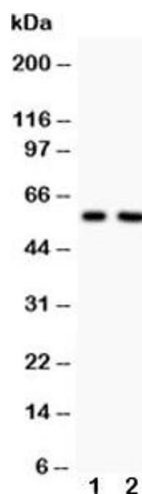
Handling

Buffer: 0.5 mg/mL if reconstituted with 0.2 mL sterile DI water

Storage: -20 °C

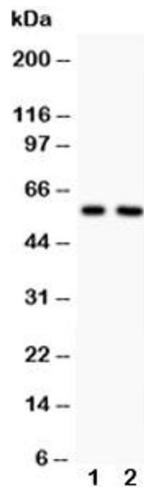
Storage Comment: After reconstitution, the Alkaline Phosphatase antibody can be stored for up to one month at 4°C. For long-term, aliquot and store at -20°C. Avoid repeated freezing and thawing.

Images



Western Blotting

Image 1. Western blot testing of Alkaline Phosphatase antibody and Lane 1: rat heart; 2: rat brain



Western Blotting

Image 2. Western blot testing of Alkaline Phosphatase antibody and Lane 1: rat heart