

Datasheet for ABIN3029906

anti-Alkaline Phosphatase antibody (N-Term)[Go to Product page](#)**2** Images

Overview

Quantity:	100 µg
Target:	Alkaline Phosphatase (ALP)
Binding Specificity:	N-Term
Reactivity:	Human
Host:	Rabbit
Clonality:	Polyclonal
Conjugate:	This Alkaline Phosphatase antibody is un-conjugated
Application:	Western Blotting (WB)

Product Details

Immunogen:	An amino acid sequence from the N-terminus of human ALPL (DQAQETLKYALELQK) was used as the immunogen for this tissue-nonspecific Alkaline Phosphatase antibody.
Isotype:	IgG
Purification:	Antigen affinity

Target Details

Target:	Alkaline Phosphatase (ALP)
Alternative Name:	Alkaline Phosphatase (ALP Products)
Background:	Alkaline phosphatase (ALPL) removes phosphate groups from the 5-prime end of DNA and RNA, and from proteins, at high pH . Most mammals have 4 different isozymes: placental, placental like, intestinal and non tissue specific (found in liver, kidney and bone). Tissues with

Target Details

particularly high concentrations of ALP include the liver, bile ducts, placenta, and bone. ALPL is the alkaline phosphatase of skin fibroblasts, the tissue-nonspecific type, and that it is active toward millimolar concentrations of the putative natural substrates phosphoethanolamine (PEA) and pyridoxal-5-prime-phosphate (PLP). ALPL gene exists in single copy in the haploid genome and is composed of 12 exons distributed over more than 50 kb. Damaged or diseased tissue releases enzymes into the blood, so serum ALP measurements can be abnormal in many conditions, including bone disease and liver disease.

UniProt: [P05186](#)

Application Details

Application Notes: The stated application concentrations are suggested starting points. Titration of the Alkaline Phosphatase antibody may be required due to differences in protocols and secondary/substrate sensitivity. Western blot: 0.5-1 µg/mL

Restrictions: For Research Use only

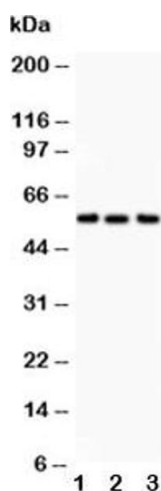
Handling

Buffer: 0.5 mg/mL if reconstituted with 0.2 mL sterile DI water

Storage: -20 °C

Storage Comment: After reconstitution, the Alkaline Phosphatase antibody can be stored for up to one month at 4°C. For long-term, aliquot and store at -20°C. Avoid repeated freezing and thawing.

Images



Western Blotting

Image 1. Western blot testing of Alkaline Phosphatase antibody and Lane 1: human placenta; 2: HT1080; 3: Jurkat



Western Blotting

Image 2. Western blot testing of Alkaline Phosphatase antibody and Lane 1: human placenta