

Datasheet for ABIN3029910

**anti-Alkaline Phosphatase antibody (AA 282-309)**[Go to Product page](#)**3** Images

## Overview

Quantity:	0.4 mL
Target:	Alkaline Phosphatase (ALP)
Binding Specificity:	AA 282-309
Reactivity:	Human
Host:	Rabbit
Clonality:	Polyclonal
Conjugate:	This Alkaline Phosphatase antibody is un-conjugated
Application:	Western Blotting (WB), ELISA, Immunohistochemistry (IHC)

## Product Details

Immunogen:	A portion of amino acids 282-309 from the human protein was used as the immunogen for this ALP antibody.
Isotype:	Ig Fraction
Purification:	Antigen affinity purified

## Target Details

Target:	Alkaline Phosphatase (ALP)
Alternative Name:	Alkaline Phosphatase ( <a href="#">ALP Products</a> )
Background:	There are at least four distinct but related alkaline phosphatases: intestinal, placental, placental-like, and liver/bone/kidney (tissue non-specific). Placental ALP is a membrane bound glycosylated enzyme, also referred to as the heat stable form, that is expressed primarily in the

## Target Details

placenta although it is closely related to the intestinal form of the enzyme as well as to the placental-like form.

UniProt: [P05187](#)

## Application Details

Application Notes: Titration of the ALP antibody may be required due to differences in protocols and secondary/substrate sensitivity.\. Western blot: 1:1000,IHC (Paraffin): 1:10-1:50

Restrictions: For Research Use only

## Handling

Format: Liquid

Buffer: In 1X PBS, pH 7.4, with 0.09 % sodium azide

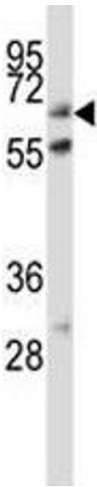
Preservative: Sodium azide

Precaution of Use: This product contains Sodium azide: a POISONOUS AND HAZARDOUS SUBSTANCE which should be handled by trained staff only.

Storage: -20 °C

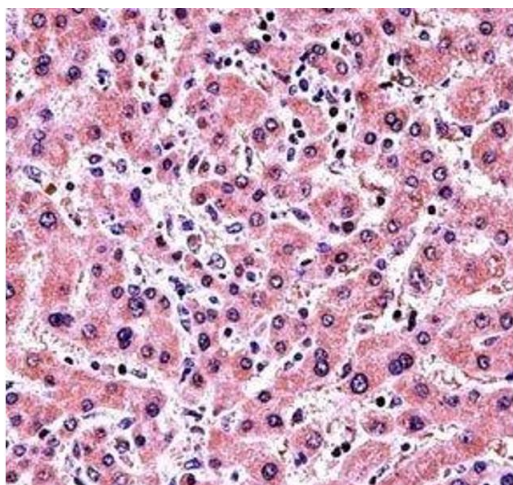
Storage Comment: Aliquot the ALP antibody and store frozen at -20°C or colder. Avoid repeated freeze-thaw cycles.

## Images



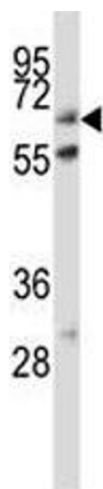
### Western Blotting

**Image 1.** ALP antibody western blot analysis in HeLa lysate



#### Immunohistochemistry

**Image 2.** ALP antibody immunohistochemistry analysis in formalin fixed and paraffin embedded human liver tissue.



#### Western Blotting

**Image 3.** ALP antibody western blot analysis in HeLa lysate