

Datasheet for ABIN3029924

**anti-Alpha-amylase 1 antibody (N-Term)**

3 Images

[Go to Product page](#)

## Overview

Quantity:	100 µg
Target:	Alpha-amylase 1 (AMY1)
Binding Specificity:	N-Term
Reactivity:	Human, Mouse, Rat
Host:	Rabbit
Clonality:	Polyclonal
Conjugate:	This Alpha-amylase 1 antibody is un-conjugated
Application:	Western Blotting (WB), Immunohistochemistry (Paraffin-embedded Sections) (IHC (p))

## Product Details

Immunogen:	An amino acid sequence from the N-terminus of human Alpha Amylase 1 (HLFEWRWVDIALECE) was used as the immunogen for this Alpha Amylase 1 antibody.
Isotype:	IgG
Purification:	Antigen affinity

## Target Details

Target:	Alpha-amylase 1 (AMY1)
Alternative Name:	alpha Amylase 1 ( <a href="#">AMY1 Products</a> )
Background:	Amylase is an enzyme that catalyses the breakdown of starch into sugars. Amylase is present in human saliva, where it begins the chemical process of digestion. By in situ hybridization combined with high resolution cytogenetics, the amylase gene is mapped to 1p21. Amylase

## Target Details

enzymes find use in bread making and to break down complex sugars such as starch(found in flour) into simple sugars. Yeast then feeds on these simple sugars and converts it into the waste products of alcohol and CO<sub>2</sub>.

UniProt: [P04745](#)

## Application Details

Application Notes: The stated application concentrations are suggested starting amounts. Titration of the Alpha Amylase 1 antibody may be required due to differences in protocols and secondary/substrate sensitivity.\. Western blot: 0.5-1 µg/mL,IHC (Paraffin): 0.5-1 µg/mL

Restrictions: For Research Use only

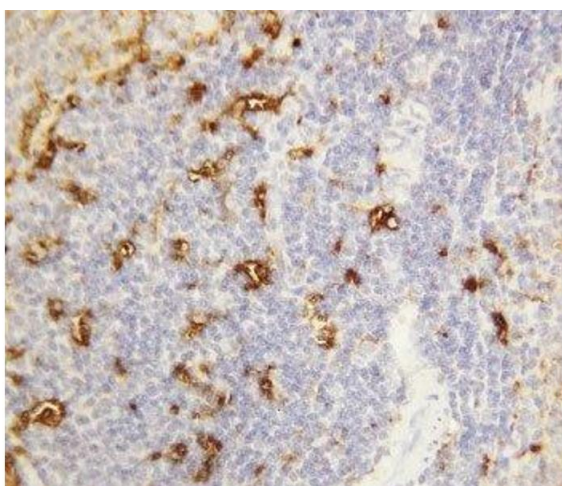
## Handling

Buffer: 0.5 mg/mL if reconstituted with 0.2 mL sterile DI water

Storage: -20 °C

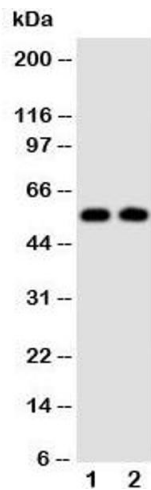
Storage Comment: After reconstitution, the Alpha Amylase 1 antibody can be stored for up to one month at 4°C. For long-term, aliquot and store at -20°C. Avoid repeated freezing and thawing.

## Images



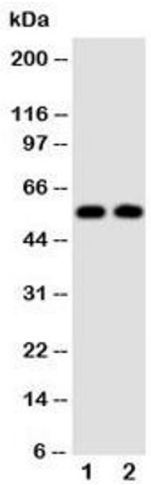
### Immunohistochemistry

**Image 1.** IHC-P: Alpha Amylase 1 antibody testing of rat spleen tissue



Western Blotting

**Image 2.** Western blot testing of Alpha Amylase 1 antibody and Lane 1: rat liver; 2: rat intestine tissue lysate



Western Blotting

**Image 3.** Western blot testing of Alpha Amylase 1 antibody and Lane 1: rat liver