

Datasheet for ABIN3029934
anti-APP antibody (C-Term)

8 Images

[Go to Product page](#)

Overview

Quantity:	100 µg
Target:	APP
Binding Specificity:	C-Term
Reactivity:	Human, Mouse, Rat
Host:	Rabbit
Clonality:	Polyclonal
Conjugate:	This APP antibody is un-conjugated
Application:	Western Blotting (WB), Immunohistochemistry (Paraffin-embedded Sections) (IHC (p)), Flow Cytometry (FACS)

Product Details

Immunogen:	An amino acid sequence from the C-terminus of human APP (DAEFRHDSGYEVHHQKLVFFAEDVGSNKGAIIGLMVGGVVIA) was used as the immunogen for this Amyloid beta antibody.
Isotype:	IgG
Purification:	Antigen affinity

Target Details

Target:	APP
Alternative Name:	Amyloid beta (APP) (APP Products)
Background:	Amyloid beta, also called Abeta and APP, denotes peptides that are crucially involved in

Target Details

Alzheimers disease as the main component of the amyloid plaques found in the brains of Alzheimer patients. Several potential activities have been discovered for Amyloid beta, including activation of kinase enzymes, functioning as a transcription factor, and anti-microbial activity (potentially associated with it pro-inflammatory activity). Moreover, monomeric Amyloid beta is indicated to protect neurons by quenching metal-inducible oxygen radical generation and thereby inhibiting neurotoxicity.

Gene ID: 351

UniProt: [P05067](#)

Pathways: [Caspase Cascade in Apoptosis](#), [EGFR Signaling Pathway](#), [Transition Metal Ion Homeostasis](#), [Skeletal Muscle Fiber Development](#), [Toll-Like Receptors Cascades](#), [Feeding Behaviour](#)

Application Details

Application Notes: The stated application concentrations are suggested starting amounts. Titration of the Amyloid beta antibody may be required due to differences in protocols and secondary/substrate sensitivity.\. Western blot: 0.5-1 µg/mL,IHC (Paraffin): 0.5-1 µg/mL,FACS: 1-3 µg/10⁶ cells

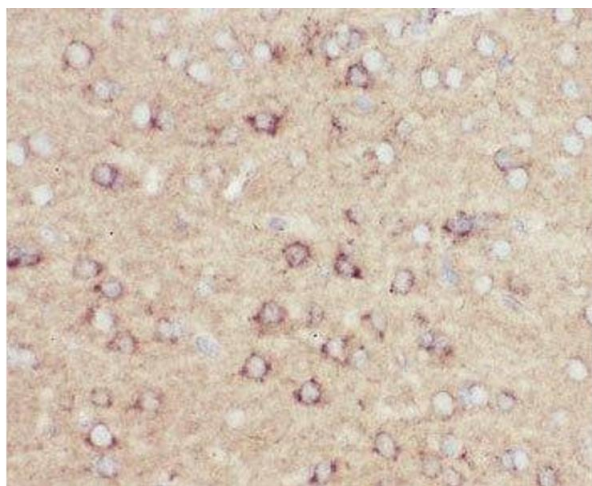
Restrictions: For Research Use only

Handling

Buffer: 0.5 mg/mL if reconstituted with 0.2 mL sterile DI water

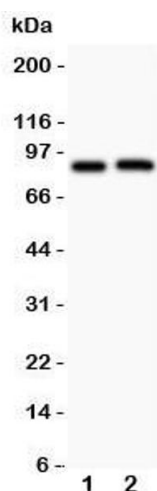
Storage: -20 °C

Storage Comment: After reconstitution, the Amyloid beta antibody can be stored for up to one month at 4°C. For long-term, aliquot and store at -20°C. Avoid repeated freezing and thawing.



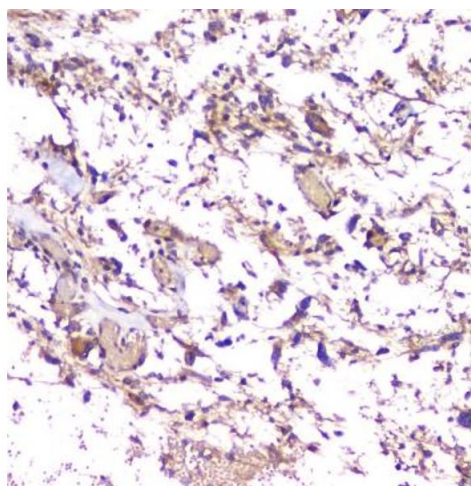
Immunohistochemistry

Image 1. IHC-P: Amyloid beta antibody testing of mouse brain tissue



Western Blotting

Image 2. Western blot testing of Amyloid beta antibody and Lane 1: rat brain; 2: mouse brain lysate. Expected/observed size: 87~120 depending on glycosylation level



Immunohistochemistry

Image 3. IHC-P: Amyloid beta antibody testing of mouse brain tissue. HIER: steamed with pH6 citrate buffer.

Please check the [product details page](#) for more images. Overall 8 images are available for ABIN3029934.