

Datasheet for ABIN3029939
anti-ALK antibody (AA 636-666)

3 Images

[Go to Product page](#)

Overview

Quantity:	0.4 mL
Target:	ALK
Binding Specificity:	AA 636-666
Reactivity:	Human
Host:	Rabbit
Clonality:	Polyclonal
Conjugate:	This ALK antibody is un-conjugated
Application:	Western Blotting (WB), ELISA, Immunohistochemistry (IHC)

Product Details

Immunogen:	A portion of amino acids 636-666 from the human protein was used as the immunogen for this ALK antibody.
Isotype:	Ig Fraction
Purification:	Purified

Target Details

Target:	ALK
Alternative Name:	ALK (ALK Products)
Background:	Anaplastic lymphoma kinase, a member of the insulin receptor subfamily of Tyr protein kinases, is an orphan receptor. It appears to play an important role in the normal development and function of the nervous system. This Type I membrane protein is expressed in brain and CNS

Target Details

and in the small intestine and testis, but not in normal lymphoid cells. A form of non-Hodgkin's lymphoma is characterized by a chromosomal translocation t(2,5)(p23,q35) that involves NPM1 and ALK. The protein contains 1 LDL-receptor class A domain and 2 putative MAM domains.

UniProt: [Q9UM73](#)

Pathways: [RTK Signaling](#)

Application Details

Application Notes: Titration of the ALK antibody may be required due to differences in protocols and secondary/substrate sensitivity.\. Western blot: 1:1000,IHC (Paraffin): 1:10-1:50

Restrictions: For Research Use only

Handling

Format: Liquid

Buffer: In 1X PBS, pH 7.4, with 0.09 % sodium azide

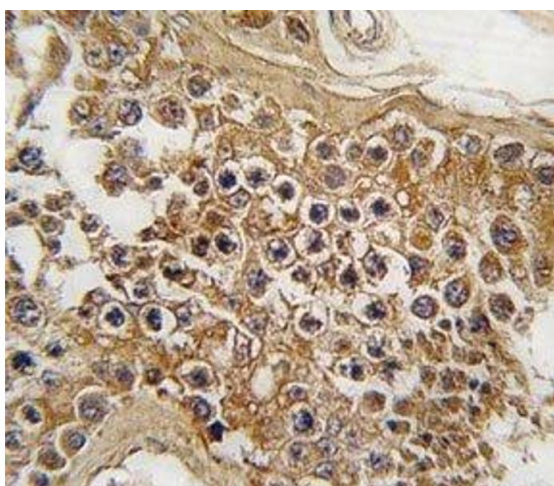
Preservative: Sodium azide

Precaution of Use: This product contains Sodium azide: a POISONOUS AND HAZARDOUS SUBSTANCE which should be handled by trained staff only.

Storage: -20 °C

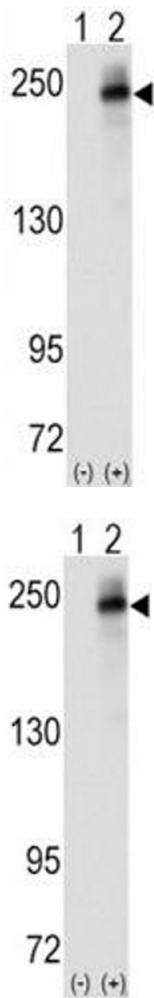
Storage Comment: Aliquot the ALK antibody and store frozen at -20°C or colder. Avoid repeated freeze-thaw cycles.

Images



Immunohistochemistry

Image 1. IHC analysis of FFPE human testis tissue stained with ALK antibody



Western Blotting

Image 2. Western blot analysis of ALK antibody and 293 cell lysate (2 ug/lane) either nontransfected (Lane 1) or transiently transfected with the human gene (2). Predicted molecular weight: 190-220 kDa.

Western Blotting

Image 3. Western blot analysis of ALK antibody and 293 cell lysate (2 ug/lane) either nontransfected (Lane 1) or transiently transfected with the human gene (2). Predicted molecular weight: 190-220 kDa.