

Datasheet for ABIN3029951
anti-ANGPTL1 antibody (C-Term)[Go to Product page](#)

2 Images

Overview

Quantity:	100 µg
Target:	ANGPTL1
Binding Specificity:	C-Term
Reactivity:	Human, Mouse, Rat
Host:	Rabbit
Clonality:	Polyclonal
Conjugate:	This ANGPTL1 antibody is un-conjugated
Application:	Western Blotting (WB)

Product Details

Immunogen:	An amino acid sequence from the C-terminus of human ANGPTL1 (SYSLRAVQMMIKPID) was used as the immunogen for this ANGPTL1 antibody (100% homologous in human, mouse and rat).
Isotype:	IgG
Purification:	Antigen affinity

Target Details

Target:	ANGPTL1
Alternative Name:	ANGPTL1 (ANGPTL1 Products)
Background:	Angiopoietin-related protein 1 is a protein that in humans is encoded by the ANGPTL1 gene. Angiopoietins are members of the vascular endothelial growth factor family and the only known

Target Details

growth factors largely specific for vascular endothelium. Angiopoietin-1, angiopoietin-2, and angiopoietin-4 participate in the formation of blood vessels. The protein encoded by this gene is another member of the angiopoietin family that is widely expressed in adult tissues with mRNA levels highest in highly vascularized tissues. This protein was found to be a secretory protein that does not act as an endothelial cell mitogen in vitro. ANGPTL1 is widely expressed in human adult tissues as a major 3.0-kb transcript and a less abundant 4.0-kb transcript.

UniProt: [O95841](#)

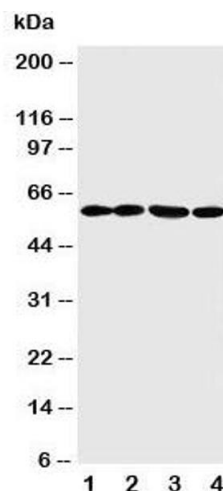
Application Details

Application Notes:	The stated application concentrations are suggested starting amounts. Titration of the ANGPTL1 antibody may be required due to differences in protocols and secondary/substrate sensitivity.\. Western blot: 0.5-1 µg/mL
Restrictions:	For Research Use only

Handling

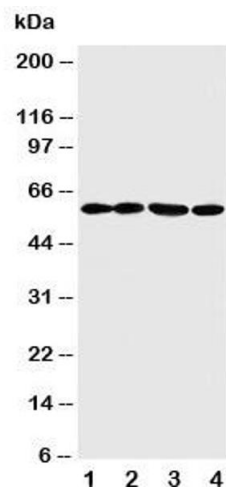
Buffer:	0.5 mg/mL if reconstituted with 0.2 mL sterile DI water
Storage:	-20 °C
Storage Comment:	After reconstitution, the ANGPTL1 antibody can be stored for up to one month at 4°C. For long-term, aliquot and store at -20°C. Avoid repeated freezing and thawing.

Images



Western Blotting

Image 1. Western blot testing of ANGPTL1 antibody and
Lane 1: A549; 2: SW620; 3: MCF-7; 4: MM231 cell lysate



Western Blotting

Image 2. Western blot testing of ANGPTL1 antibody and
Lane 1: A549