

Datasheet for ABIN3029962
anti-ACE2 antibody (AA 59-90)

5 Images



[Go to Product page](#)

Overview

Quantity:	0.4 mL
Target:	ACE2
Binding Specificity:	AA 59-90
Reactivity:	Human
Host:	Rabbit
Clonality:	Polyclonal
Conjugate:	This ACE2 antibody is un-conjugated
Application:	Western Blotting (WB), ELISA, Immunohistochemistry (IHC)

Product Details

Immunogen:	A portion of amino acids 59-90 from the human protein was used as the immunogen for this ACE2 antibody.
Isotype:	Ig Fraction
Purification:	Purified

Target Details

Target:	ACE2
Alternative Name:	ACE2 (ACE2 Products)
Background:	This gene encodes a deduced 805-amino acid protein containing a potential 17-amino acid N-terminal signal peptide and a putative 22-amino acid C-terminal membrane anchor. It also possesses a zinc metalloprotease consensus sequence and a conserved glutamine residue

Target Details

that may function as a third zinc ligand. ACE2 is expressed predominantly in vascular endothelial cells of the heart and kidney. ACE converts angiotensin I to angiotensin II, ACE2 converts angiotensin I to angiotensin 1-9, which has 9 amino acids. Angiotensin II is a potent blood vessel constrictor, while angiotensin 1-9 does not impact blood vessels but is cleaved by ACE to a shorter peptide, angiotensin 1-7, which is a blood vessel dilator. Spike (S) proteins of coronaviruses, including the SARS coronavirus, bind with cellular receptors to mediate infection of target cells. ACE-2 binds the S1 domain of the SARS coronavirus S protein. SARS coronavirus replicates efficiently on ACE2-transfected but not mock-transfected 293T cells. Anti-ACE-2 but not anti-ACE1 antibody blocks viral replication on Vero E6 cells. It has been proposed that ACE2 is a functional receptor for SARS coronavirus.

UniProt: [Q9BYF1](#)

Pathways: [ACE Inhibitor Pathway](#), [Peptide Hormone Metabolism](#), [Regulation of Systemic Arterial Blood Pressure by Hormones](#), [Feeding Behaviour](#)

Application Details

Application Notes: Titration of the ACE2 antibody may be required due to differences in protocols and secondary/substrate sensitivity.\. Western blot: 1:1000,IHC (Paraffin): 1:50-1:100

Restrictions: For Research Use only

Handling

Format: Liquid

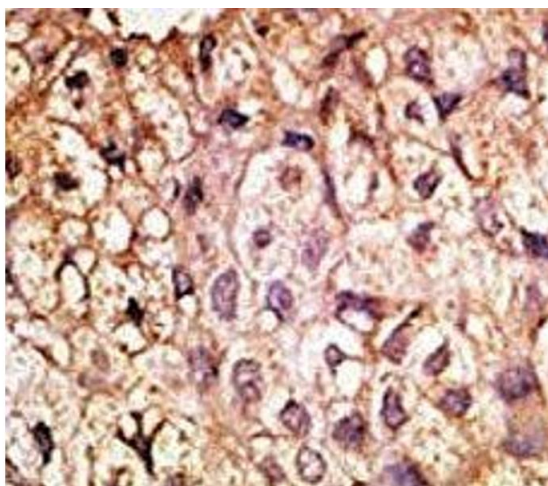
Buffer: In 1X PBS, pH 7.4, with 0.09 % sodium azide

Preservative: Sodium azide

Precaution of Use: This product contains Sodium azide: a POISONOUS AND HAZARDOUS SUBSTANCE which should be handled by trained staff only.

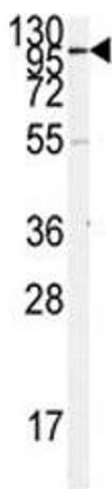
Storage: -20 °C

Storage Comment: Aliquot the ACE2 antibody and store frozen at -20°C or colder. Avoid repeated freeze-thaw cycles.



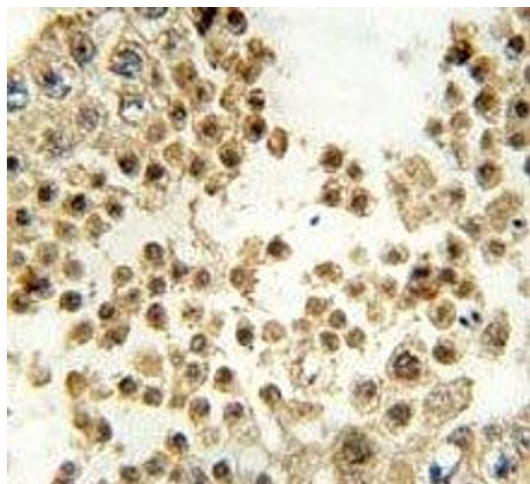
Immunohistochemistry

Image 1. IHC analysis of FFPE human hepatocarcinoma tissue stained with the ACE2 antibody



Western Blotting

Image 2. Western blot analysis of ACE2 antibody and K562 lysate. Predicted molecular weight: 90-100 kDa.



Immunohistochemistry

Image 3. IHC analysis of FFPE human testis tissue stained with ACE2 antibody

Please check the [product details page](#) for more images. Overall 5 images are available for ABIN3029962.