

Datasheet for ABIN3029963
anti-ACE2 antibody (AA 140-172)

5 Images

[Go to Product page](#)

Overview

Quantity:	0.4 mL
Target:	ACE2
Binding Specificity:	AA 140-172
Reactivity:	Human
Host:	Rabbit
Clonality:	Polyclonal
Conjugate:	This ACE2 antibody is un-conjugated
Application:	Western Blotting (WB), ELISA, Immunohistochemistry (IHC), Flow Cytometry (FACS)

Product Details

Immunogen:	A portion of amino acids 140-172 from the human protein was used as the immunogen for this ACE2 antibody.
Isotype:	Ig Fraction
Purification:	Purified

Target Details

Target:	ACE2
Alternative Name:	ACE2 (ACE2 Products)
Background:	ACE2 is a carboxypeptidase which converts angiotensin I to angiotensin 1-9, a peptide of unknown function, and angiotensin II to angiotensin 1-7, a vasodilator. Also able to hydrolyze apelin-13 and dynorphin-13 with high efficiency. May be an important regulator of heart

Target Details

function. In case of human coronaviruses SARS and HCoV-NL63 infections, serve as functional receptor for the spike glycoprotein of both coronaviruses. [UniProt]

UniProt: [Q9BYF1](#)

Pathways: [ACE Inhibitor Pathway](#), [Peptide Hormone Metabolism](#), [Regulation of Systemic Arterial Blood Pressure by Hormones](#), [Feeding Behaviour](#)

Application Details

Application Notes: Titration of the ACE2 antibody may be required due to differences in protocols and secondary/substrate sensitivity.\. Western blot: 1:1000,IHC (Paraffin): 1:50-1:100,Flow Cytometry: 1:10-1:50

Restrictions: For Research Use only

Handling

Format: Liquid

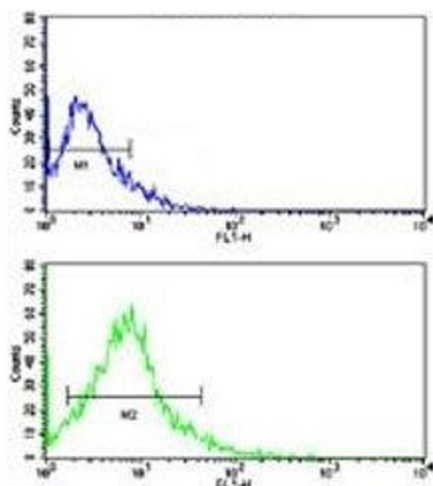
Buffer: In 1X PBS, pH 7.4, with 0.09 % sodium azide

Preservative: Sodium azide

Precaution of Use: This product contains Sodium azide: a POISONOUS AND HAZARDOUS SUBSTANCE which should be handled by trained staff only.

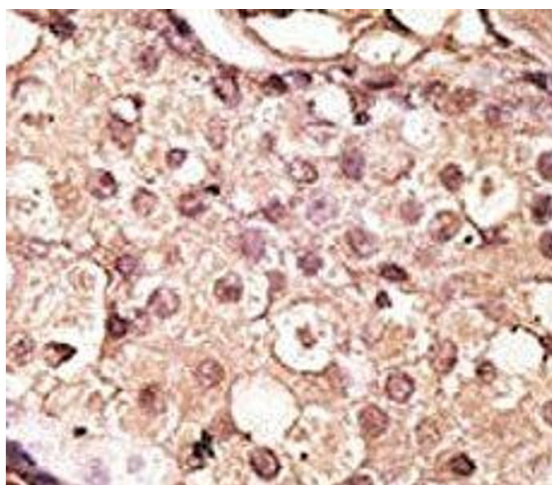
Storage: -20 °C

Storage Comment: Aliquot the ACE2 antibody and store frozen at -20°C or colder. Avoid repeated freeze-thaw cycles.



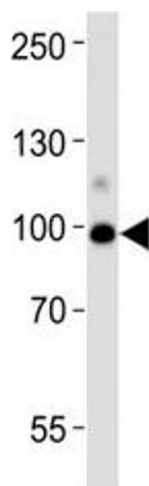
Flow Cytometry

Image 1. Flow cytometric analysis of HL-60 cells using ACE2 antibody (green) compared to a negative control (blue). FITC-conjugated goat-anti-rabbit secondary Ab was used for the analysis.



Immunohistochemistry

Image 2. IHC analysis of FFPE human breast carcinoma tissue stained with the ACE2 antibody



Western Blotting

Image 3. Western blot analysis of lysate from human kidney tissue lysate using ACE2 antibody diluted at 1:1000. Predicted molecular weight: 90-100 kDa.

Please check the [product details page](#) for more images. Overall 5 images are available for ABIN3029963.