

Datasheet for ABIN3029965
anti-ACE2 antibody (AA 773-805)



[Go to Product page](#)

4 Images

Overview

Quantity:	0.4 mL
Target:	ACE2
Binding Specificity:	AA 773-805
Reactivity:	Human
Host:	Rabbit
Clonality:	Polyclonal
Conjugate:	This ACE2 antibody is un-conjugated
Application:	Western Blotting (WB), ELISA, Immunohistochemistry (IHC)

Product Details

Immunogen:	A portion of amino acids 773-805 from the human protein was used as the immunogen for this Angiotensin-converting enzyme 2 antibody.
Isotype:	Ig Fraction
Purification:	Purified

Target Details

Target:	ACE2
Alternative Name:	Angiotensin-Converting Enzyme 2 (ACE2 Products)
Background:	ACE2 is expressed predominantly in vascular endothelial cells of the heart and kidney. ACE converts angiotensin I to angiotensin II, ACE2 converts angiotensin I to angiotensin 1-9, which has 9 amino acids. Angiotensin II is a potent blood vessel constrictor, while angiotensin 1-9

Target Details

does not impact blood vessels but is cleaved by ACE to a shorter peptide, angiotensin 1-7, which is a blood vessel dilator.

UniProt: [Q9BYF1](#)

Pathways: [ACE Inhibitor Pathway](#), [Peptide Hormone Metabolism](#), [Regulation of Systemic Arterial Blood Pressure by Hormones](#), [Feeding Behaviour](#)

Application Details

Application Notes: Titration of the Angiotensin-converting enzyme 2 antibody may be required due to differences in protocols and secondary/substrate sensitivity.\. Western blot: 1:1000,IHC (Paraffin): 1:50-1:100

Restrictions: For Research Use only

Handling

Format: Liquid

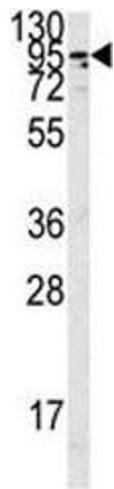
Buffer: In 1X PBS, pH 7.4, with 0.09 % sodium azide

Preservative: Sodium azide

Precaution of Use: This product contains Sodium azide: a POISONOUS AND HAZARDOUS SUBSTANCE which should be handled by trained staff only.

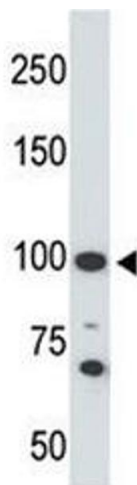
Storage: -20 °C

Storage Comment: Aliquot the Angiotensin-converting enzyme 2 antibody and store frozen at -20°C or colder. Avoid repeated freeze-thaw cycles.



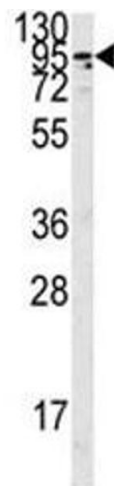
Western Blotting

Image 1. Western blot analysis of the Angiotensin-converting enzyme 2 antibody in K562 lysate. Predicted molecular weight: 90-100 kDa.



Western Blotting

Image 2. Western blot testing of Angiotensin-converting enzyme 2 antibody and 293 cell lysate. Predicted molecular weight: 90-100 kDa.



Western Blotting

Image 3. Western blot analysis of the Angiotensin-converting enzyme 2 antibody in K562 lysate. Predicted molecular weight: 90-100 kDa.

Please check the [product details page](#) for more images. Overall 4 images are available for ABIN3029965.