

Datasheet for ABIN3029969

anti-Annexin a1 antibody (AA 129-158)**5** Images[Go to Product page](#)

Overview

Quantity:	0.4 mL
Target:	Annexin a1 (ANXA1)
Binding Specificity:	AA 129-158
Reactivity:	Human
Host:	Rabbit
Clonality:	Polyclonal
Conjugate:	This Annexin a1 antibody is un-conjugated
Application:	Western Blotting (WB), ELISA, Immunohistochemistry (IHC), Flow Cytometry (FACS)

Product Details

Immunogen:	A portion of amino acids 129-158 from the human protein was used as the immunogen for this Annexin A1 antibody.
Isotype:	Ig Fraction
Purification:	Purified

Target Details

Target:	Annexin a1 (ANXA1)
Alternative Name:	Annexin A1 (ANXA1 Products)
Background:	Annexin I belongs to a family of Ca(2+)-dependent phospholipid binding proteins which have a molecular weight of approximately 35,000 to 40,000 and are preferentially located on the cytosolic face of the plasma membrane. Annexin I protein has an apparent relative molecular

Target Details

mass of 40 kDa, with phospholipase A2 inhibitory activity. Since phospholipase A2 is required for the biosynthesis of the potent mediators of inflammation, prostaglandins and leukotrienes, annexin I may have potential anti-inflammatory activity.

UniProt: [P04083](#)

Pathways: [Hormone Transport](#)

Application Details

Application Notes: Titration of the Annexin A1 antibody may be required due to differences in protocols and secondary/substrate sensitivity.\. Western blot: 1:1000,IHC (Paraffin): 1:50-1:100,Flow Cytometry: 1:10-1:50

Restrictions: For Research Use only

Handling

Format: Liquid

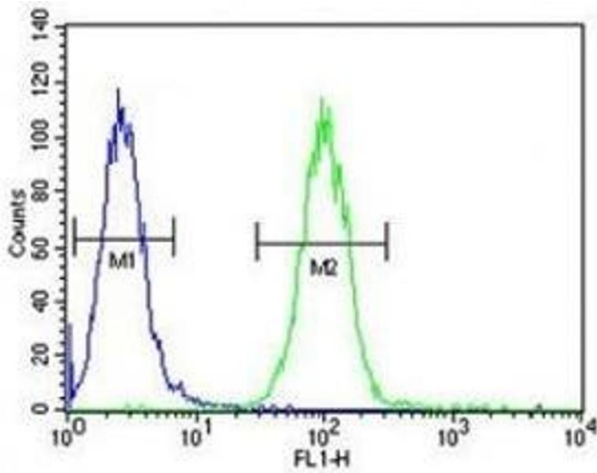
Buffer: In 1X PBS, pH 7.4, with 0.09 % sodium azide

Preservative: Sodium azide

Precaution of Use: This product contains Sodium azide: a POISONOUS AND HAZARDOUS SUBSTANCE which should be handled by trained staff only.

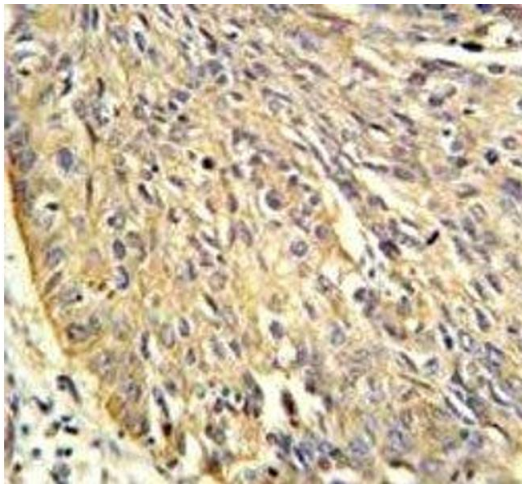
Storage: -20 °C

Storage Comment: Aliquot the Annexin A1 antibody and store frozen at -20°C or colder. Avoid repeated freeze-thaw cycles.



Flow Cytometry

Image 1. Annexin A1 antibody flow cytometric analysis of A2058 cells (green) compared to a negative control (blue). FITC-conjugated goat-anti-rabbit secondary Ab was used for the analysis.



Immunohistochemistry

Image 2. Annexin A1 antibody IHC analysis in formalin fixed and paraffin embedded human lung carcinoma.



Western Blotting

Image 3. Western blot analysis of Annexin A1 antibody and A2058 lysate. Predicted molecular weight ~36 kDa.

Please check the [product details page](#) for more images. Overall 5 images are available for ABIN3029969.