

Datasheet for ABIN3030021
anti-ASS1 antibody (AA 281-310)

7 Images

[Go to Product page](#)

Overview

Quantity:	0.4 mL
Target:	ASS1
Binding Specificity:	AA 281-310
Reactivity:	Human
Host:	Rabbit
Clonality:	Polyclonal
Conjugate:	This ASS1 antibody is un-conjugated
Application:	Western Blotting (WB), ELISA, Immunohistochemistry (IHC), Flow Cytometry (FACS)

Product Details

Immunogen:	A portion of amino acids 281-310 from the human protein was used as the immunogen for this ASS1 antibody.
Isotype:	Ig Fraction
Cross-Reactivity (Details):	Expected species reactivity: Bovine, Chicken, Mouse, Rat
Purification:	Antigen affinity purified

Target Details

Target:	ASS1
Alternative Name:	ASS1 (ASS1 Products)
Background:	The protein encoded by this gene catalyzes the penultimate step of the arginine biosynthetic

Target Details

pathway. There are approximately 10 to 14 copies of this gene including the pseudogenes scattered across the human genome, among which the one located on chromosome 9 appears to be the only functional gene for argininosuccinate synthetase. Mutations in the chromosome 9 copy of ASS cause citrullinemia. Two transcript variants encoding the same protein have been found for this gene.

UniProt: [P00966](#)

Pathways: [Response to Growth Hormone Stimulus](#), [Cellular Response to Molecule of Bacterial Origin](#)

Application Details

Application Notes: Titration of the ASS1 antibody may be required due to differences in protocols and secondary/substrate sensitivity.\. Western blot: 1:1000,IHC (Paraffin): 1:10-1:50,Flow Cytometry: 1:10-1:50

Restrictions: For Research Use only

Handling

Format: Liquid

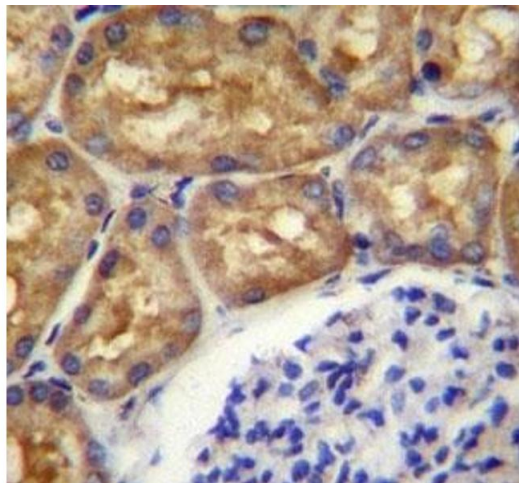
Buffer: In 1X PBS, pH 7.4, with 0.09 % sodium azide

Preservative: Sodium azide

Precaution of Use: This product contains Sodium azide: a POISONOUS AND HAZARDOUS SUBSTANCE which should be handled by trained staff only.

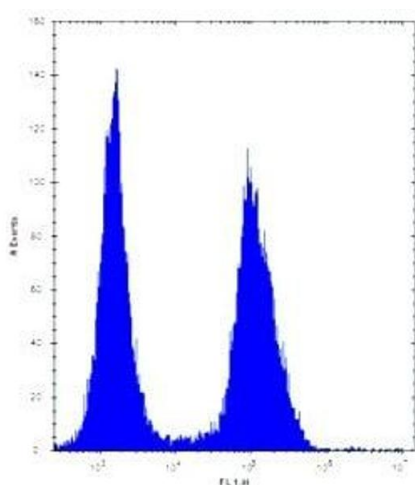
Storage: -20 °C

Storage Comment: Aliquot the ASS1 antibody and store frozen at -20°C or colder. Avoid repeated freeze-thaw cycles.



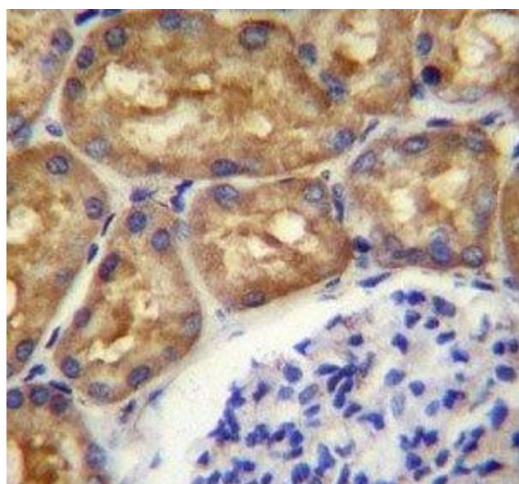
Immunohistochemistry

Image 1. ASS1 antibody immunohistochemistry analysis in formalin fixed and paraffin embedded human kidney tissue.



Flow Cytometry

Image 2. ASS1 antibody flow cytometric analysis of Jurkat cells (right histogram)



Immunohistochemistry

Image 3. ASS1 antibody immunohistochemistry analysis in formalin fixed and paraffin embedded human kidney tissue.

Please check the [product details page](#) for more images. Overall 7 images are available for ABIN3030021.