

Datasheet for ABIN3030022
anti-ASS1 antibody (AA 192-221)[Go to Product page](#)

9 Images

Overview

Quantity:	0.4 mL
Target:	ASS1
Binding Specificity:	AA 192-221
Reactivity:	Human, Mouse
Host:	Rabbit
Clonality:	Polyclonal
Conjugate:	This ASS1 antibody is un-conjugated
Application:	Western Blotting (WB), ELISA, Immunohistochemistry (IHC), Flow Cytometry (FACS), Immunofluorescence (IF)

Product Details

Immunogen:	A portion of amino acids 192-221 from the human protein was used as the immunogen for this ASS1 antibody.
Isotype:	Ig Fraction
Cross-Reactivity (Details):	Expected species reactivity: Rat
Purification:	Purified

Target Details

Target:	ASS1
Alternative Name:	ASS1 (ASS1 Products)

Target Details

Background: ASS catalyzes the penultimate step of the arginine biosynthetic pathway. There are approximately 10 to 14 copies of this gene including the pseudogenes scattered across the human genome, among which the one located on chromosome 9 appears to be the only functional gene for argininosuccinate synthetase.

UniProt: [P00966](#)

Pathways: [Response to Growth Hormone Stimulus](#), [Cellular Response to Molecule of Bacterial Origin](#)

Application Details

Application Notes: Titration of the ASS1 antibody may be required due to differences in protocols and secondary/substrate sensitivity.\. Western blot: 1:1000,IHC (Paraffin): 1:50-1:100,Flow Cytometry: 1:10-1:50,Immunofluorescence: 1:10-1:50

Restrictions: For Research Use only

Handling

Format: Liquid

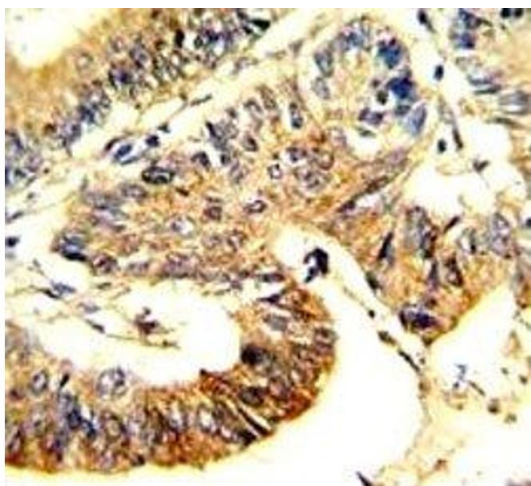
Buffer: In 1X PBS, pH 7.4, with 0.09 % sodium azide

Preservative: Sodium azide

Precaution of Use: This product contains Sodium azide: a POISONOUS AND HAZARDOUS SUBSTANCE which should be handled by trained staff only.

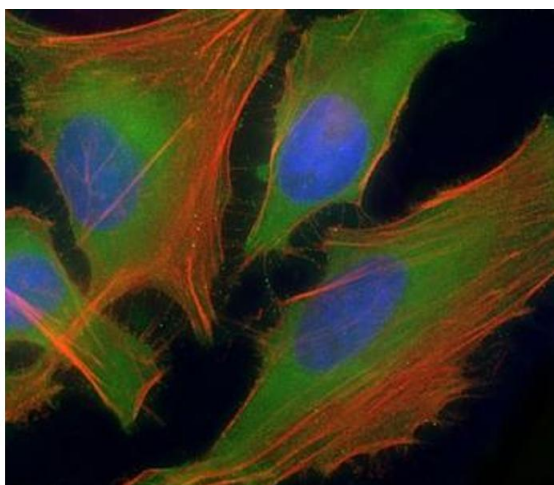
Storage: -20 °C

Storage Comment: Aliquot the ASS1 antibody and store frozen at -20°C or colder. Avoid repeated freeze-thaw cycles.



Immunohistochemistry

Image 1. IHC analysis of FFPE human colon carcinoma stained with ASS1 antibody



Immunofluorescence

Image 2. Immunofluorescent staining of permeabilized human HeLa cells with ASS1 antibody at 1:25 dilution, followed by Dylight 488-conjugated goat anti-rabbit IgG (green). Counterstains: blue (nuclear) and red (actin).



Western Blotting

Image 3. Western blot analysis of ASS1 antibody and HeLa lysate

Please check the [product details page](#) for more images. Overall 9 images are available for ABIN3030022.