

Datasheet for ABIN3030023

anti-beta Arrestin 1 antibody (N-Term)**3** Images[Go to Product page](#)

Overview

Quantity:	100 µg
Target:	beta Arrestin 1 (ARRB1)
Binding Specificity:	N-Term
Reactivity:	Human, Mouse, Rat
Host:	Rabbit
Clonality:	Polyclonal
Conjugate:	This beta Arrestin 1 antibody is un-conjugated
Application:	Western Blotting (WB), Immunohistochemistry (Paraffin-embedded Sections) (IHC (p))

Product Details

Immunogen:	An amino acid sequence from the N-terminus of human ARRB1 (ANVQSFPPAPEDKKPLTRLQER) was used as the immunogen for this beta Arrestin 1 antibody (100% homologous in human, mouse and rat).
Isotype:	IgG
Purification:	Antigen affinity

Target Details

Target:	beta Arrestin 1 (ARRB1)
Alternative Name:	beta Arrestin 1 (ARRB1 Products)
Background:	Beta Arrestin 1 is a protein which in humans is encoded by the ARRB1 gene. Members of arrestin/beta-arrestin protein family are though to participate in agonist-mediated

Target Details

desensitization of G-protein-coupled receptors and cause specific dampening of cellular responses to stimuli such as hormones, neurotransmitters, or sensory signals. By fluorescence in situ hybridization, this gene is mapped to 11q13.4. Beta Arrestin 1 is a cytosolic protein and acts as a cofactor in the beta-adrenergic receptor kinase (BARK) mediated desensitization of beta-adrenergic receptors. Besides the central nervous system, it is expressed at high levels in peripheral blood leukocytes, and thus the BARK/beta-arrestin system is believed to play a major role in regulating receptor-mediated immune functions.

UniProt: [P49407](#)

Pathways: [Positive Regulation of Peptide Hormone Secretion](#), [Nuclear Hormone Receptor Binding](#), [cAMP Metabolic Process](#), [Myometrial Relaxation and Contraction](#), [Synaptic Membrane](#), [Regulation of G-Protein Coupled Receptor Protein Signaling](#), [Phototransduction](#)

Application Details

Application Notes: The stated application concentrations are suggested starting amounts. Titration of the beta Arrestin 1 antibody may be required due to differences in protocols and secondary/substrate sensitivity. \. Western blot: 0.5-1 µg/mL, IHC (Paraffin): 0.5-1 µg/mL

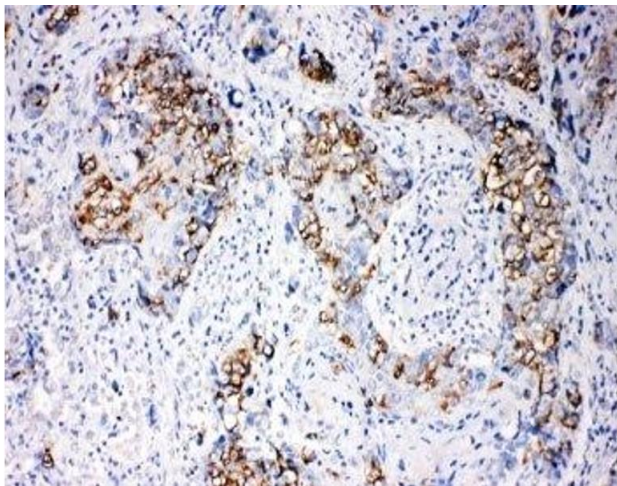
Restrictions: For Research Use only

Handling

Buffer: 0.5 mg/mL if reconstituted with 0.2 mL sterile DI water

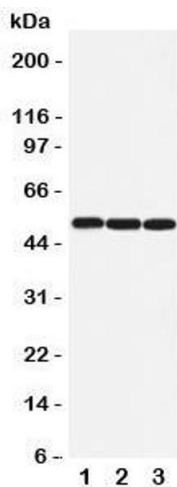
Storage: -20 °C

Storage Comment: After reconstitution, the beta Arrestin 1 antibody can be stored for up to one month at 4°C. For long-term, aliquot and store at -20°C. Avoid repeated freezing and thawing.



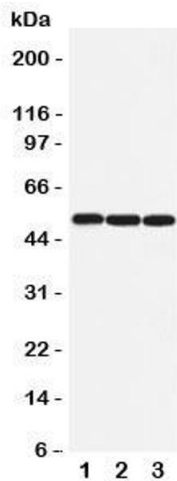
Immunohistochemistry

Image 1. IHC-P: beta Arrestin 1 antibody testing of human breast cancer tissue



Western Blotting

Image 2. Western blot testing of beta Arrestin 1 antibody and Lane 1: rat lung; 2: rat skeletal muscle; 3: human SW620 cell lysate



Western Blotting

Image 3. Western blot testing of beta Arrestin 1 antibody and Lane 1: rat lung