

Datasheet for ABIN3030038
anti-ATG5 antibody (AA 1-30)



[Go to Product page](#)

9 Images

Overview

Quantity:	0.4 mL
Target:	ATG5
Binding Specificity:	AA 1-30
Reactivity:	Human, Mouse
Host:	Rabbit
Clonality:	Polyclonal
Conjugate:	This ATG5 antibody is un-conjugated
Application:	Western Blotting (WB), ELISA, Immunohistochemistry (IHC), Immunofluorescence (IF)

Product Details

Immunogen:	A portion of amino acids 1-30 from the human protein was used as the immunogen for this ATG5 antibody.
Isotype:	Ig Fraction
Cross-Reactivity (Details):	Expected species reactivity: Rat, Bovine, Pig
Purification:	Purified

Target Details

Target:	ATG5
Alternative Name:	ATG5 (ATG5 Products)
Background:	ATG5 is involved in autophagic vesicle formation. Conjugation with ATG12, through a ubiquitin-

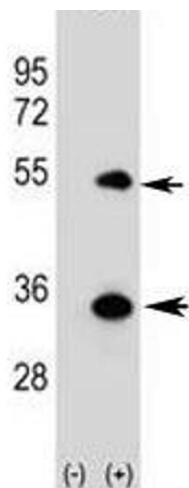
Target Details

like conjugating system involving ATG7 as an E1-like activating enzyme and ATG10 as an E2-like conjugating enzyme, is essential for its function. The ATG12/ATG5 conjugate acts as an E3-like enzyme which is required for lipidation of ATG8 family proteins and their association to the vesicle membranes. Involved in mitochondrial quality control after oxidative damage, and in subsequent cellular longevity. The ATG12/5 conjugate also negatively regulates the innate antiviral immune response by blocking the type I IFN production pathway through direct association with RARRES3 and MAVS. Also plays a role in translation or delivery of incoming viral RNA to the translation apparatus. Plays a critical role in multiple aspects of lymphocyte development and is essential for both B and T lymphocyte survival and proliferation. Required for optimal processing and presentation of antigens for MHC II. Involved in the maintenance of axon morphology and membrane structures, as well as in normal adipocyte differentiation. Promotes primary ciliogenesis through removal of OFD1 from centriolar satellites and degradation of IFT20 via the autophagic pathway. [UniProt]

UniProt:	Q9H1Y0
Pathways:	Activation of Innate immune Response , Production of Molecular Mediator of Immune Response , Autophagy

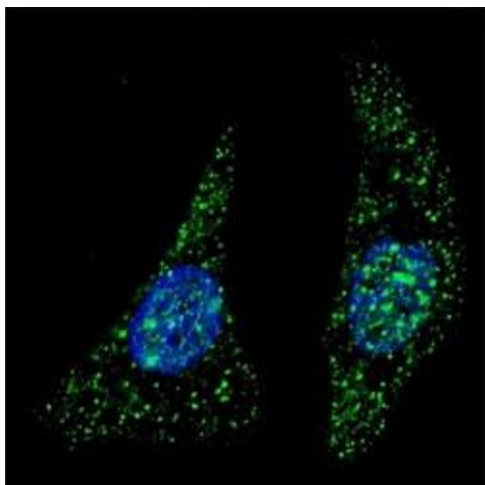
Application Details

Application Notes:	Titration of the ATG5 antibody may be required due to differences in protocols and secondary/substrate sensitivity.\. Western blot: 1:1000,Immunofluorescence: 1:200,IHC (Paraffin): 1:50-1:100
Restrictions:	For Research Use only
Handling	
Format:	Liquid
Buffer:	In 1X PBS pH 7.4 with 0.09 % sodium azide
Preservative:	Sodium azide
Precaution of Use:	This product contains Sodium azide: a POISONOUS AND HAZARDOUS SUBSTANCE which should be handled by trained staff only.
Storage:	-20 °C
Storage Comment:	Aliquot the ATG5 antibody and store frozen at -20°C or colder. Avoid repeated freeze-thaw cycles.



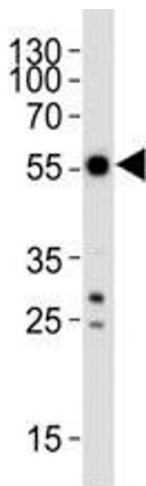
Western Blotting

Image 1. Western blot analysis of ATG5 antibody and 293 cell lysate (2 ug/lane) either nontransfected (Lane 1) or transiently transfected (2) with the human gene. ATG5: ~32 kDa; ATG5/ATG12 heterodimer: ~56 kDa



Immunofluorescence

Image 2. Fluorescent image of U251 cells stained with ATG5 antibody at 1:200. Immunoreactivity is localized to autophagic vacuoles in the cytoplasm.



Western Blotting

Image 3. Western blot analysis of lysate from SH-SY5Y cell line using APG5/ ATG5 antibody at 1:1000. ATG5: ~32 kDa; ATG5/ATG12 heterodimer: ~56 kDa

Please check the [product details page](#) for more images. Overall 9 images are available for ABIN3030038.