

Datasheet for ABIN3030049
anti-ABCB11 antibody (AA 1038-1067)

3 Images

[Go to Product page](#)

Overview

Quantity:	0.4 mL
Target:	ABCB11
Binding Specificity:	AA 1038-1067
Reactivity:	Human, Mouse
Host:	Rabbit
Clonality:	Polyclonal
Conjugate:	This ABCB11 antibody is un-conjugated
Application:	Western Blotting (WB), Immunohistochemistry (IHC), ELISA

Product Details

Immunogen:	A portion of amino acids 1038-1067 from the human protein was used as the immunogen for this ABCB11 antibody.
Isotype:	Ig Fraction
Purification:	Purified

Target Details

Target:	ABCB11
Alternative Name:	ABCB11 (ABCB11 Products)
Background:	ABCB11 is involved in the ATP-dependent secretion of bile salts into the canaliculus of hepatocytes. It is expressed predominately, if not exclusively, in the liver, where it is further localized to the canicular microvilli and to subcanicular vesicles of the hepatocytes.

Target Details

Structurally, ABCB11 is a multifunctional polypeptide with two homologous halves, each containing a hydrophobic membrane-anchoring domain and an ATP binding cassette (ABC) domain. Defects in ABCB11 are the cause of progressive familial intrahepatic cholestasis 2 (PFIC2). PFIC2 is an inherited liver disease of childhood which is characterized by cholestasis and normal serum gamma-glutamyltransferase activity. Defects in ABCB11 are also found in cases of chronic intrahepatic cholestasis without obvious familial history of chronic liver disease.

UniProt: [O95342](#)

Application Details

Application Notes: Titration of the ABCB11 antibody may be required due to differences in protocols and secondary/substrate sensitivity.\. Western blot: 1:1000,IHC (Paraffin): 1:50-1:100

Restrictions: For Research Use only

Handling

Format: Liquid

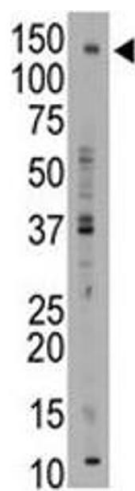
Buffer: In 1X PBS, pH 7.4, with 0.09 % sodium azide

Preservative: Sodium azide

Precaution of Use: This product contains Sodium azide: a POISONOUS AND HAZARDOUS SUBSTANCE which should be handled by trained staff only.

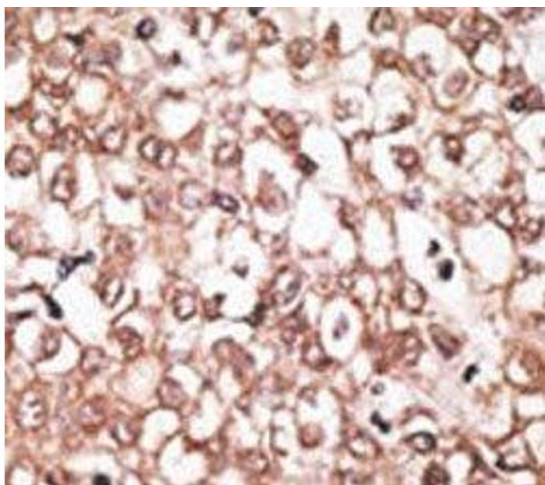
Storage: -20 °C

Storage Comment: Aliquot the ABCB11 antibody and store frozen at -20°C or colder. Avoid repeated freeze-thaw cycles.



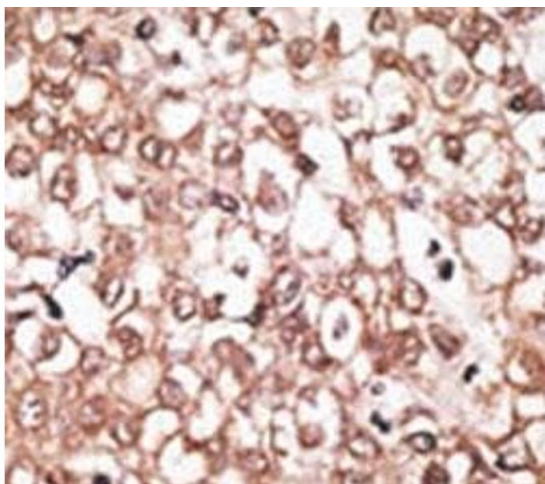
Western Blotting

Image 1. ABCB11 antibody western blot analysis with mouse liver tissue lysate



Immunohistochemistry

Image 2. IHC analysis of FFPE human hepatocarcinoma tissue stained with the ABCB11 antibody



Immunohistochemistry

Image 3. IHC analysis of FFPE human hepatocarcinoma tissue stained with the ABCB11 antibody