

Datasheet for ABIN3030058
anti-ABCG1 antibody (AA 168-195)

7 Images

[Go to Product page](#)

Overview

Quantity:	0.4 mL
Target:	ABCG1
Binding Specificity:	AA 168-195
Reactivity:	Human, Mouse
Host:	Rabbit
Clonality:	Polyclonal
Conjugate:	This ABCG1 antibody is un-conjugated
Application:	Western Blotting (WB), Immunohistochemistry (IHC), ELISA, Flow Cytometry (FACS), Immunofluorescence (IF)

Product Details

Immunogen:	A portion of amino acids 168-195 from the human protein was used as the immunogen for this ABCG1 antibody.
Isotype:	Ig Fraction
Purification:	Purified

Target Details

Target:	ABCG1
Alternative Name:	ABCG1 (ABCG1 Products)
Background:	ABCG1 is a member of the superfamily of ATP-binding cassette (ABC) transporters. ABC proteins transport various molecules across extra- and intra-cellular membranes. ABC genes

Target Details

are divided into seven distinct subfamilies (ABC1, MDR/TAP, MRP, ALD, OABP, GCN20, White). This protein is a member of the White subfamily. It is involved in macrophage cholesterol and phospholipids transport, and may regulate cellular lipid homeostasis in other cell types.

UniProt: [P45844](#)

Pathways: [Lipid Metabolism](#)

Application Details

Application Notes: Titration of the ABCG1 antibody may be required due to differences in protocols and secondary/substrate sensitivity.\. Western blot: 1:1000,Flow Cytometry: 1:10-1:50,IHC (Paraffin): 1:50-1:100,Immunofluorescence: 1:10-1:50

Restrictions: For Research Use only

Handling

Format: Liquid

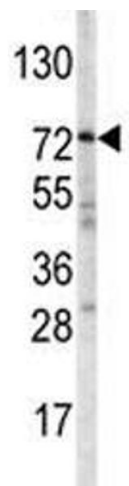
Buffer: In 1X PBS, pH 7.4, with 0.09 % sodium azide

Preservative: Sodium azide

Precaution of Use: This product contains Sodium azide: a POISONOUS AND HAZARDOUS SUBSTANCE which should be handled by trained staff only.

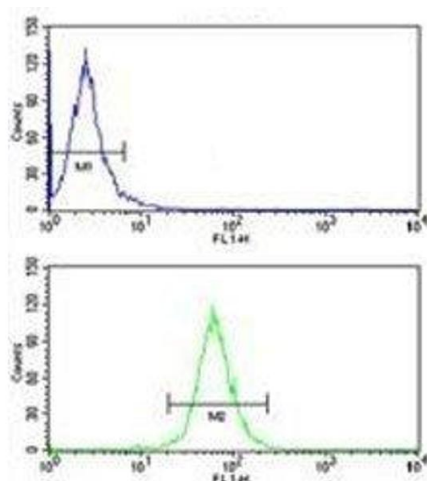
Storage: -20 °C

Storage Comment: Aliquot the ABCG1 antibody and store frozen at -20°C or colder. Avoid repeated freeze-thaw cycles.



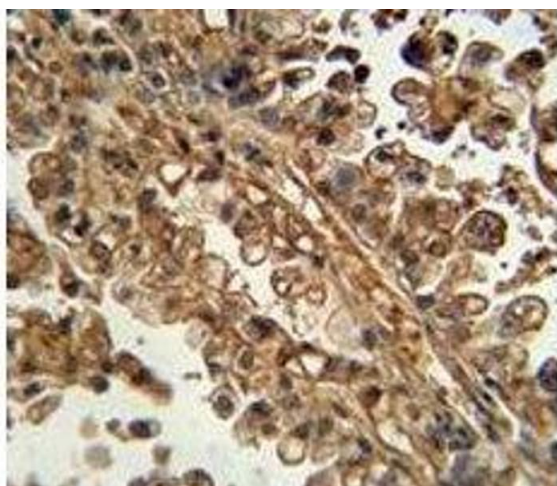
Western Blotting

Image 1. Western blot analysis of ABCG1 antibody and mouse spleen tissue lysate. Predicted molecular weight: 75~90KD



Flow Cytometry

Image 2. ABCG1 antibody flow cytometry analysis of HepG2 cells (bottom histogram) compared to a negative control (top histogram). FITC-conjugated goat-anti-rabbit secondary Ab was used for the analysis.



Immunohistochemistry

Image 3. ABCG1 antibody immunohistochemistry analysis in formalin fixed and paraffin embedded human lung carcinoma.

Please check the [product details page](#) for more images. Overall 7 images are available for ABIN3030058.