

Datasheet for ABIN3030059
anti-ABCG1 antibody (AA 359-387)

3 Images

[Go to Product page](#)

Overview

Quantity:	0.4 mL
Target:	ABCG1
Binding Specificity:	AA 359-387
Reactivity:	Human
Host:	Rabbit
Clonality:	Polyclonal
Conjugate:	This ABCG1 antibody is un-conjugated
Application:	Immunohistochemistry (IHC), ELISA, Flow Cytometry (FACS)

Product Details

Immunogen:	A portion of amino acids 359-387 from the human protein was used as the immunogen for this ABCG1 antibody.
Isotype:	Ig Fraction
Purification:	Purified

Target Details

Target:	ABCG1
Alternative Name:	ABCG1 (ABCG1 Products)
Background:	ATP-binding cassette sub-family G member 1 is a transporter involved in macrophage lipid homeostasis. Is an active component of the macrophage lipid export complex. Could also be involved in intracellular lipid transport processes. The role in cellular lipid homeostasis may not

Target Details

be limited to macrophages.

UniProt: [P45844](#)

Pathways: [Lipid Metabolism](#)

Application Details

Application Notes: Titration of the ABCG1 antibody may be required due to differences in protocols and secondary/substrate sensitivity.\. IHC (Paraffin): 1:10-1:50,Flow Cytometry: 1:10-1:50

Restrictions: For Research Use only

Handling

Format: Liquid

Buffer: In 1X PBS, pH 7.4, with 0.09 % sodium azide

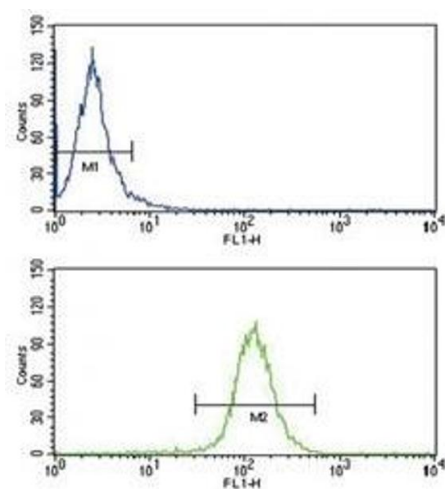
Preservative: Sodium azide

Precaution of Use: This product contains Sodium azide: a POISONOUS AND HAZARDOUS SUBSTANCE which should be handled by trained staff only.

Storage: -20 °C

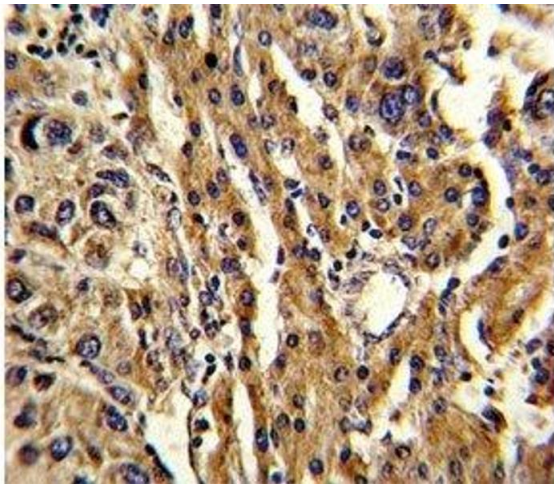
Storage Comment: Aliquot the ABCG1 antibody and store frozen at -20°C or colder. Avoid repeated freeze-thaw cycles.

Images



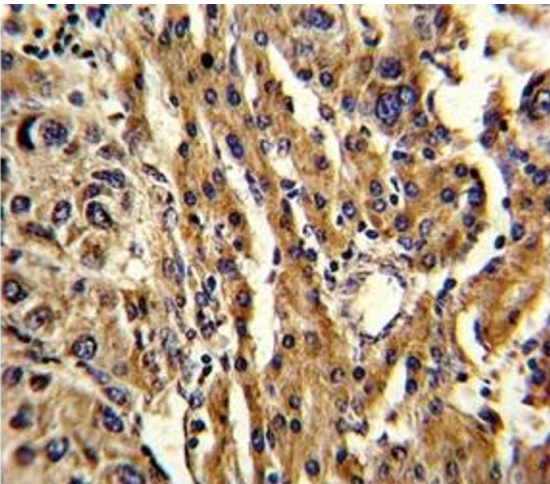
Flow Cytometry

Image 1. ABCG1 antibody flow cytometry analysis of HepG2 cells (bottom histogram) compared to a negative control (top histogram). FITC-conjugated goat-anti-rabbit secondary Ab was used for the analysis.



Immunohistochemistry

Image 2. IHC analysis of FFPE human hepatocarcinoma stained with ABCG1 antibody



Immunohistochemistry

Image 3. IHC analysis of FFPE human hepatocarcinoma stained with ABCG1 antibody