

Datasheet for ABIN3030062
anti-ABCG2 antibody (AA 305-335)

6 Images

[Go to Product page](#)

Overview

Quantity:	0.4 mL
Target:	ABCG2
Binding Specificity:	AA 305-335
Reactivity:	Human
Host:	Rabbit
Clonality:	Polyclonal
Conjugate:	This ABCG2 antibody is un-conjugated
Application:	Western Blotting (WB), Immunohistochemistry (IHC), ELISA, Immunofluorescence (IF), Flow Cytometry (FACS)

Product Details

Immunogen:	A portion of amino acids 305-335 from the human protein was used as the immunogen for this ABCG2 antibody.
Isotype:	Ig Fraction
Purification:	Purified

Target Details

Target:	ABCG2
Alternative Name:	ABCG2 (ABCG2 Products)
Background:	ABCG2 is a membrane-associated protein included in the superfamily of ATP-binding cassette (ABC) transporters. ABC proteins transport various molecules across extra- and intra-cellular

Target Details

membranes. ABC genes are divided into seven distinct subfamilies (ABC1, MDR/TAP, MRP, ALD, OABP, GCN20, White). This protein is a member of the White subfamily. Alternatively referred to as a breast cancer resistance protein, this protein functions as a xenobiotic transporter which may play a major role in multi-drug resistance. It likely serves as a cellular defense mechanism in response to mitoxantrone and anthracycline exposure. Significant expression of this protein has been observed in the placenta, which may suggest a potential role for this molecule in placenta tissue.

UniProt: [Q9UNQ0](#)

Pathways: [Transition Metal Ion Homeostasis](#)

Application Details

Application Notes: Titration of the ABCG2 antibody may be required due to differences in protocols and secondary/substrate sensitivity.\. Western blot: 1:1000,Immunofluorescence: 1:10-1:50,Flow Cytometry: 1:10-1:50,IHC (Paraffin): 1:50-1:100

Restrictions: For Research Use only

Handling

Format: Liquid

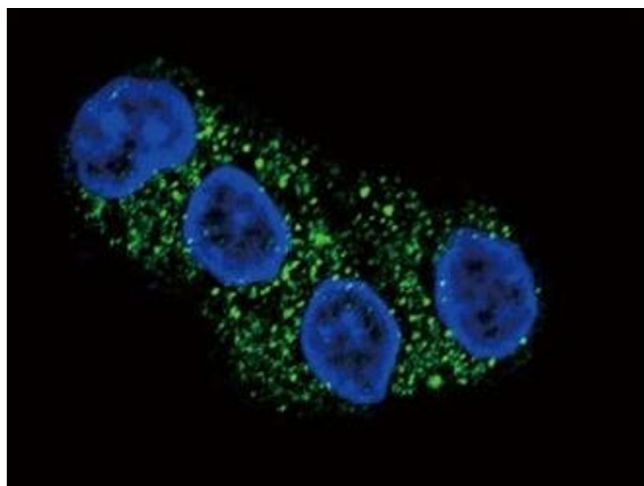
Buffer: In 1X PBS, pH 7.4, with 0.09 % sodium azide

Preservative: Sodium azide

Precaution of Use: This product contains Sodium azide: a POISONOUS AND HAZARDOUS SUBSTANCE which should be handled by trained staff only.

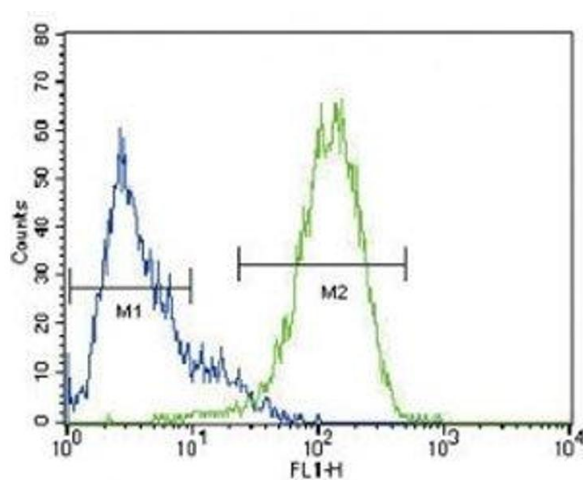
Storage: -20 °C

Storage Comment: Aliquot the ABCG2 antibody and store frozen at -20°C or colder. Avoid repeated freeze-thaw cycles.



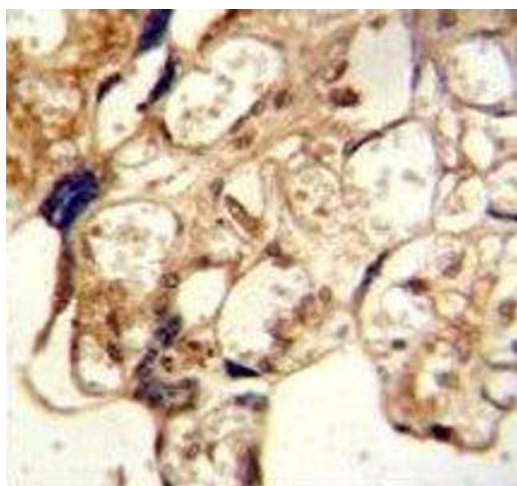
Immunofluorescence

Image 1. Confocal immunofluorescent analysis of ABCG2 antibody with HepG2 cells followed by Alexa Fluor 488-conjugated goat anti-rabbit IgG (green). DAPI was used as a nuclear counterstain (blue).



Flow Cytometry

Image 2. ABCG2 antibody flow cytometric analysis of HepG2 cells (right histogram) compared to a negative control (left histogram)



Immunohistochemistry

Image 3. ABCG2 antibody immunohistochemistry analysis in formalin fixed and paraffin embedded human placenta tissue

Please check the [product details page](#) for more images. Overall 6 images are available for ABIN3030062.