

Datasheet for ABIN3030067
anti-ATP2A2 antibody (N-Term)



[Go to Product page](#)

5 Images

Overview

Quantity:	100 µg
Target:	ATP2A2
Binding Specificity:	N-Term
Reactivity:	Human, Mouse, Rat
Host:	Rabbit
Clonality:	Polyclonal
Conjugate:	This ATP2A2 antibody is un-conjugated
Application:	Western Blotting (WB), Immunohistochemistry (Paraffin-embedded Sections) (IHC (p))

Product Details

Immunogen:	An amino acid sequence from the N-terminus of human ATP2A2 (MENAHTKTVEEVLGHFGVNESTGLSLEQVKKL) was used as the immunogen for this ATP2A2 antibody.
Isotype:	IgG
Purification:	Antigen affinity

Target Details

Target:	ATP2A2
Alternative Name:	ATP2A2 (ATP2A2 Products)
Background:	SERCA2, also called ATP2A2 or ATP2B, encodes one of the SERCA Ca(2+)-ATPases, which are intracellular pumps located in the sarcoplasmic or endoplasmic reticula of muscle cells. They

Target Details

are closely related to the plasma membrane Ca(2+)-ATPases, or PMCA. SERCA2 belongs to the large family of P-type cation pumps that couple ATP hydrolysis with cation transport across membranes. The SERCA2 gene is mapped to 12q24.11. SERCA2 was expressed in all specimens, with pronounced expression in the subnuclear aspect of basal epidermal keratinocytes. There was variable suprabasal expression. SERCA2 expression was also observed in the infundibulum and outer root sheath of hair follicles, germinative and mature cells of sebaceous glands, secretory coil and duct of eccrine glands, apocrine gland cells, and arrector pili muscle. In Darier disease skin, strong SERCA2 positivity was detected in the basal, suprabasal, and acantholytic lesional cells.

Gene ID: 488

Pathways: [Myometrial Relaxation and Contraction](#), [ER-Nucleus Signaling](#), [Ribonucleoside Biosynthetic Process](#)

Application Details

Application Notes: The stated application concentrations are suggested starting amounts. Titration of the ATP2A2 antibody may be required due to differences in protocols and secondary/substrate sensitivity.\. Western blot: 0.5-1 µg/mL,IHC (Paraffin): 0.5-1 µg/mL

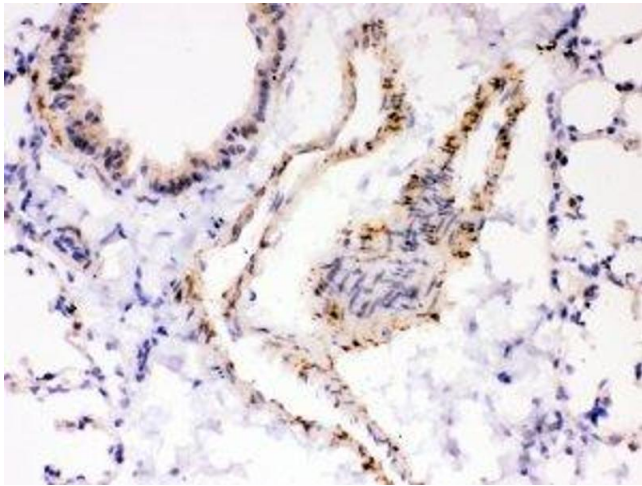
Restrictions: For Research Use only

Handling

Buffer: 0.5 mg/mL if reconstituted with 0.2 mL sterile DI water

Storage: -20 °C

Storage Comment: After reconstitution, the ATP2A2 antibody can be stored for up to one month at 4°C. For long-term, aliquot and store at -20°C. Avoid repeated freezing and thawing.



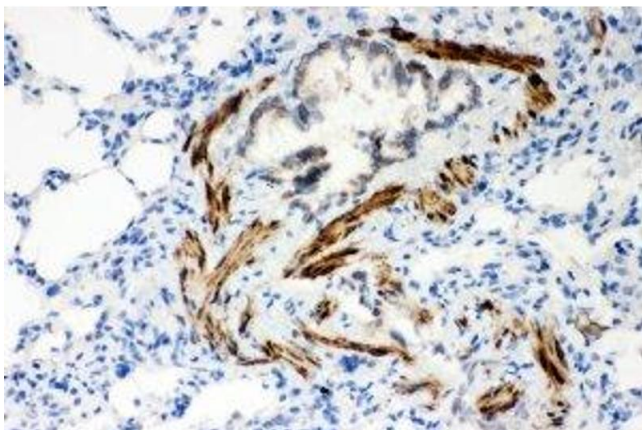
Immunohistochemistry

Image 1. IHC-P: ATP2A2 antibody testing of mouse lung tissue



Western Blotting

Image 2. Western blot testing of ATP2A2 antibody and Lane 1: rat skeletal muscle; 2: mouse skeletal muscle; Predicted size: 115kD; Observed size: 115kD



Immunohistochemistry

Image 3. IHC-P: ATP2A2 antibody testing of rat lung tissue

Please check the [product details page](#) for more images. Overall 5 images are available for ABIN3030067.