

Datasheet for ABIN3030073

## anti-Aurora A antibody (AA 364-392)

### 5 Images



[Go to Product page](#)

### Overview

Quantity:	0.4 mL
Target:	Aurora A (AURKA)
Binding Specificity:	AA 364-392
Reactivity:	Human
Host:	Rabbit
Clonality:	Polyclonal
Conjugate:	This Aurora A antibody is un-conjugated
Application:	Western Blotting (WB), ELISA, Immunofluorescence (IF), Flow Cytometry (FACS)

### Product Details

Immunogen:	A portion of amino acids 364-392 from the human protein was used as the immunogen for this Aurora-A antibody.
Isotype:	Ig Fraction
Purification:	Purified

### Target Details

Target:	Aurora A (AURKA)
Alternative Name:	Aurora-A ( <a href="#">AURKA Products</a> )
Background:	Chromosomal segregation during mitosis as well as meiosis is regulated by kinases and phosphatases. The Aurora kinases, members of the Ser/Thr protein kinase family, associate with microtubules during chromosome movement and segregation. Aurora kinase A may play

## Target Details

a role in cell cycle regulation during anaphase and/or telophase, in relation to the function of the centrosome/spindle pole region during chromosome segregation. It may be involved in microtubule formation and/or stabilization. This protein has also been postulated to play a key role during tumor development and progression. Aurora kinase A localizes on centrosomes in interphase cells and at each spindle pole in mitosis. It is highly expressed in testis, weakly in skeletal muscle, thymus and spleen, and also highly expressed in colon, ovarian, prostate, neuroblastoma, breast and cervical cancer cell lines. Expression is cell-cycle regulated, low in G1/S, accumulates during G2/M, and decreases rapidly afterward. Defects in Aurora kinase A are responsible for numerical centrosome aberrations including aneuploidy.

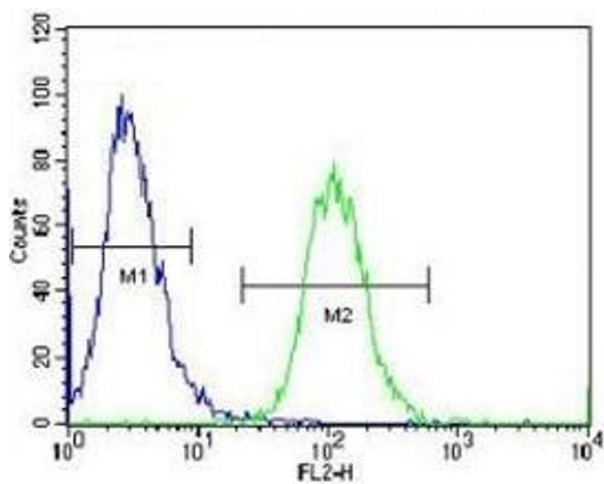
UniProt:	<a href="#">O14965</a>
Pathways:	<a href="#">Cell Division Cycle</a> , <a href="#">Asymmetric Protein Localization</a>

## Application Details

Application Notes:	Titration of the Aurora-A antibody may be required due to differences in protocols and secondary/substrate sensitivity.\. Western blot: 1:1000,Immunofluorescence: 1:10-1:50,Flow Cytometry: 1:10-1:50
Restrictions:	For Research Use only

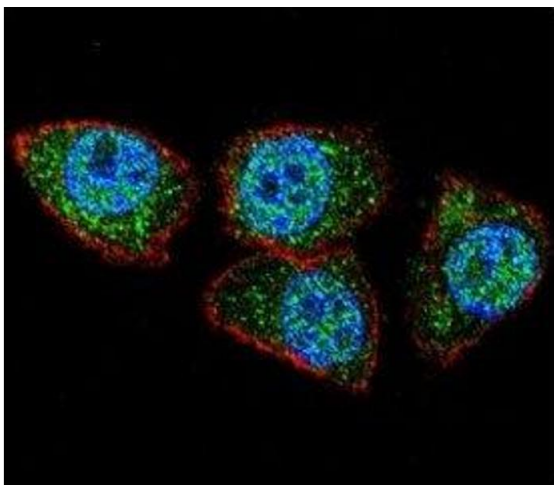
## Handling

Format:	Liquid
Buffer:	In 1X PBS, pH 7.4, with 0.09 % sodium azide
Preservative:	Sodium azide
Precaution of Use:	This product contains Sodium azide: a POISONOUS AND HAZARDOUS SUBSTANCE which should be handled by trained staff only.
Storage:	-20 °C
Storage Comment:	Aliquot the Aurora-A antibody and store frozen at -20°C or colder. Avoid repeated freeze-thaw cycles.



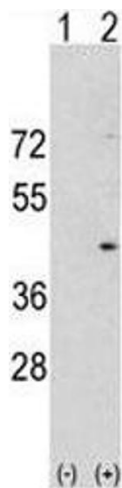
### Flow Cytometry

**Image 1.** Aurora-A antibody flow cytometric analysis of HeLa cells (green) compared to a negative control (blue). FITC-conjugated goat-anti-rabbit secondary Ab was used for the analysis.



### Immunofluorescence

**Image 2.** Confocal immunofluorescent analysis of Aurora-A antibody with HeLa cells followed by Alexa Fluor 488-conjugated goat anti-rabbit IgG (green). Actin filaments have been labeled with Alexa Fluor 555 Phalloidin (red). DAPI was used as a nuclear counterstain



### Western Blotting

**Image 3.** Western blot analysis of Aurora-A antibody and 293 cell lysate either nontransfected (Lane 1) or transiently transfected with the Aurora-A gene (2).

Please check the [product details page](#) for more images. Overall 5 images are available for ABIN3030073.