



Datasheet for ABIN3030080

## anti-Aurora Kinase C antibody (C-Term)



[Go to Product page](#)

### 3 Images

#### Overview

Quantity:	0.4 mL
Target:	Aurora Kinase C (AURKC)
Binding Specificity:	C-Term
Reactivity:	Human
Host:	Rabbit
Clonality:	Polyclonal
Conjugate:	This Aurora Kinase C antibody is un-conjugated
Application:	Western Blotting (WB), ELISA, Immunohistochemistry (IHC)

#### Product Details

Immunogen:	A portion of the C-terminal region of the human protein was used as immunogen for this AURKC antibody.
Isotype:	Ig Fraction
Purification:	Purified

#### Target Details

Target:	Aurora Kinase C (AURKC)
Alternative Name:	AURKC ( <a href="#">AURKC Products</a> )
Background:	Chromosomal segregation during mitosis as well as meiosis is regulated by kinases and phosphatases. The Aurora kinases, members of the Ser/Thr protein kinase family, associate with microtubules during chromosome movement and segregation. Aurora kinase C may play a

## Target Details

---

part in organizing microtubules in relation to the function of the centrosome/spindle pole during mitosis. This protein is localized to centrosome from anaphase to cytokinesis. Expression is limited to testis in normal cells. Elevated expression levels are seen only in a subset of cancer cells such as HepG2, HuH7 and HeLa cells. Aurora-C expression is maximum at M phase.

UniProt: [Q9UQB9](#)

Pathways: [Cell Division Cycle](#), [Maintenance of Protein Location](#)

## Application Details

---

Application Notes: Titration of the AURKC antibody may be required due to differences in protocols and secondary/substrate sensitivity.\. Western blot: 1:1000,IHC (Paraffin): 1:50-1:100

Restrictions: For Research Use only

## Handling

---

Format: Liquid

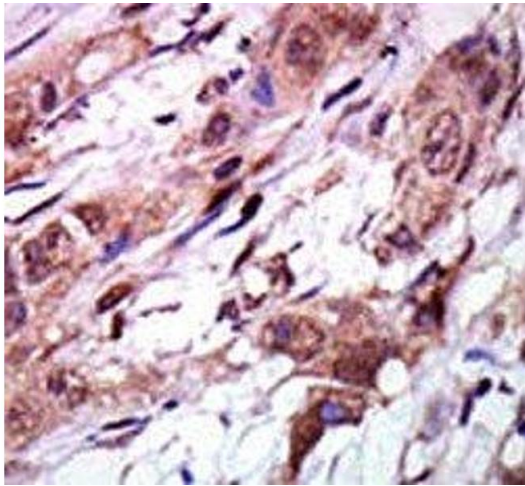
Buffer: In 1X PBS, pH 7.4, with 0.09 % sodium azide

Preservative: Sodium azide

Precaution of Use: This product contains Sodium azide: a POISONOUS AND HAZARDOUS SUBSTANCE which should be handled by trained staff only.

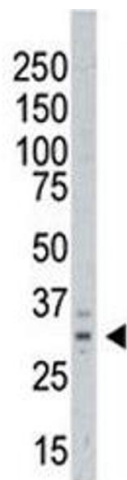
Storage: -20 °C

Storage Comment: Aliquot the AURKC antibody and store frozen at -20°C or colder. Avoid repeated freeze-thaw cycles.



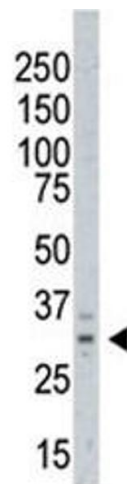
### Immunohistochemistry

**Image 1.** IHC analysis of FFPE human breast carcinoma tissue stained with the AURKC antibody



### Western Blotting

**Image 2.** Western blot testing of AURKC antibody and A375 cell lysate. Predicted molecular weight ~ 33 kDa.



### Western Blotting

**Image 3.** Western blot testing of AURKC antibody and A375 cell lysate. Predicted molecular weight ~ 33 kDa.