

Datasheet for ABIN3030085  
**anti-ATG12 antibody (AA 1-30)**



[Go to Product page](#)

**3** Images

## Overview

Quantity:	0.4 mL
Target:	ATG12
Binding Specificity:	AA 1-30
Reactivity:	Human
Host:	Rabbit
Clonality:	Polyclonal
Conjugate:	This ATG12 antibody is un-conjugated
Application:	Western Blotting (WB), ELISA, Immunohistochemistry (IHC), Immunofluorescence (IF)

## Product Details

Immunogen:	A portion of amino acids 1-30 from the human protein was used as the immunogen for this ATG12 antibody.
Isotype:	Ig Fraction
Purification:	Purified

## Target Details

Target:	ATG12
Alternative Name:	ATG12 ( <a href="#">ATG12 Products</a> )
Background:	Macroautophagy is the major inducible pathway for the general turnover of cytoplasmic constituents in eukaryotic cells, it is also responsible for the degradation of active cytoplasmic enzymes and organelles during nutrient starvation. Macroautophagy involves the formation of

## Target Details

double-membrane bound autophagosomes which enclose the cytoplasmic constituent targeted for degradation in a membrane bound structure, which then fuse with the lysosome (or vacuole) releasing a single-membrane bound autophagic bodies which are then degraded within the lysosome (or vacuole). APG12L/ATG12 is the human homolog of yeast APG12, a ubiquitin-activating enzyme E1-like protein essential for the conjugation system that mediates membrane fusion in autophagy.

UniProt: [O94817](#)

Pathways: [Autophagy](#)

## Application Details

Application Notes: Titration of the ATG12 antibody may be required due to differences in protocols and secondary/substrate sensitivity.\. Immunofluorescence: 1:200,Western blot: 1:1000,IHC (Paraffin): 1:50-1:100

Restrictions: For Research Use only

## Handling

Format: Liquid

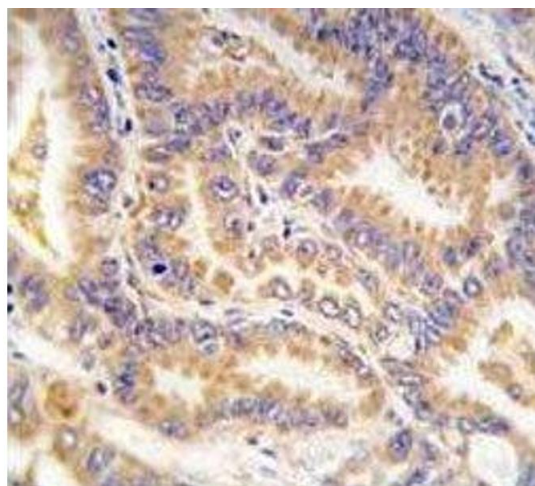
Buffer: In 1X PBS, pH 7.4, with 0.09 % sodium azide

Preservative: Sodium azide

Precaution of Use: This product contains Sodium azide: a POISONOUS AND HAZARDOUS SUBSTANCE which should be handled by trained staff only.

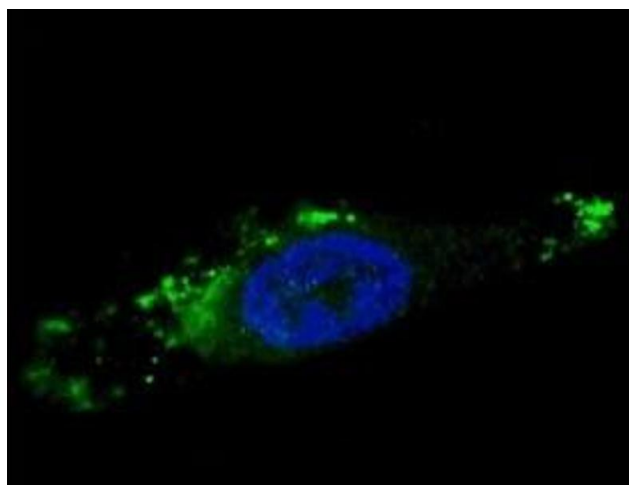
Storage: -20 °C

Storage Comment: Aliquot the ATG12 antibody and store frozen at -20°C or colder. Avoid repeated freeze-thaw cycles.



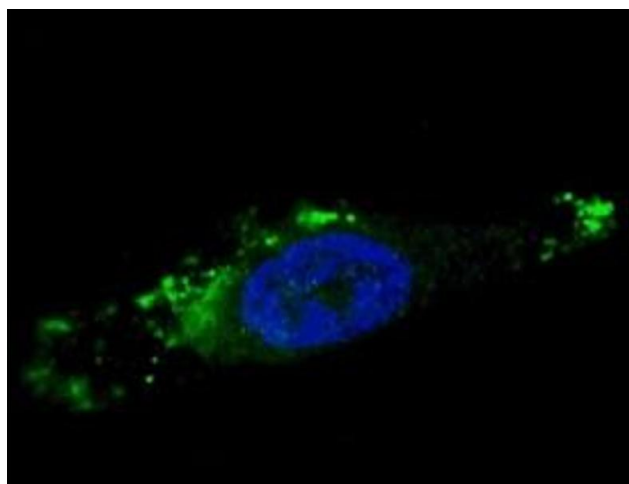
#### Immunohistochemistry

**Image 1.** IHC analysis of FFPE human lung carcinoma tissue stained with ATG12 antibody



#### Immunofluorescence

**Image 2.** Fluorescent image of chloroquine-treated U251 cells stained with ATG12 antibody. Alexa Fluor 488 conjugated secondary was used. ATG12 immunoreactivity is localized to autophagic vacuoles in the cytoplasm.



#### Immunofluorescence

**Image 3.** Fluorescent image of chloroquine-treated U251 cells stained with ATG12 antibody. Alexa Fluor 488 conjugated secondary was used. ATG12 immunoreactivity is localized to autophagic vacuoles in the cytoplasm.