

Datasheet for ABIN3030091
anti-AXL antibody (AA 13-44)[Go to Product page](#)

5 Images

Overview

Quantity:	0.4 mL
Target:	AXL
Binding Specificity:	AA 13-44
Reactivity:	Human
Host:	Rabbit
Clonality:	Polyclonal
Conjugate:	This AXL antibody is un-conjugated
Application:	Western Blotting (WB), ELISA, Immunohistochemistry (IHC), Flow Cytometry (FACS)

Product Details

Immunogen:	A portion of amino acids 13-44 from the human protein was used as the immunogen for this AXL antibody.
Isotype:	Ig Fraction
Purification:	Purified

Target Details

Target:	AXL
Alternative Name:	AXL (AXL Products)
Background:	AXL, a member of the AXL/UFO subfamily of Tyr protein kinases, may function as a signal transducer between specific cell types of mesodermal origin. This Type I membrane protein has transforming potential in patients with chronic myeloproliferative disorder or chronic

Target Details

myelocytic leukemia. The protein contains 2 putative fibronectin type III domains and 2 putative immunoglobulin-like C2-type domains.

UniProt: [P30530](#)

Pathways: [RTK Signaling](#), [Cellular Response to Molecule of Bacterial Origin](#)

Application Details

Application Notes: Titration of the AXL antibody may be required due to differences in protocols and secondary/substrate sensitivity.\. Western blot: 1:1000,IHC (Paraffin): 1:50-1:100,Flow Cytometry: 1:10-1:50

Restrictions: For Research Use only

Handling

Format: Liquid

Buffer: In 1X PBS, pH 7.4, with 0.09 % sodium azide

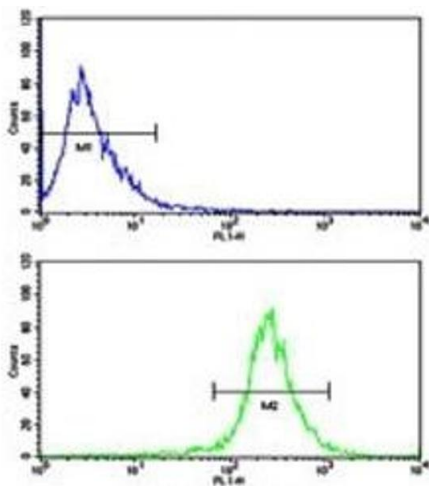
Preservative: Sodium azide

Precaution of Use: This product contains Sodium azide: a POISONOUS AND HAZARDOUS SUBSTANCE which should be handled by trained staff only.

Storage: -20 °C

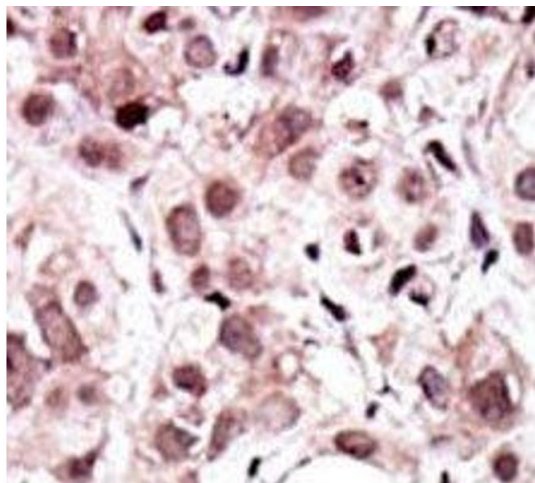
Storage Comment: Aliquot the AXL antibody and store frozen at -20°C or colder. Avoid repeated freeze-thaw cycles.

Images



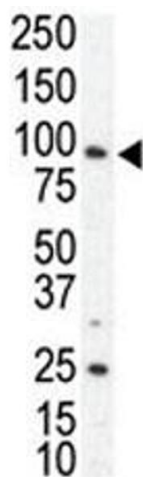
Flow Cytometry

Image 1. Flow cytometric analysis of WiDr cells using AXL antibody (bottom histogram) compared to a negative control (top histogram). FITC-conjugated goat-anti-rabbit secondary Ab was used for the analysis.



Immunohistochemistry

Image 2. IHC analysis of FFPE human cancer tissue stained with the AXL antibody



Western Blotting

Image 3. Western blot analysis of AXL antibody and SKBR3 cell lysate. Predicted molecular weight is 104 kDa unglycosylated, 120-140 kDa with glycosylation

Please check the [product details page](#) for more images. Overall 5 images are available for ABIN3030091.