

Datasheet for ABIN3030102  
**anti-Bcl-2 antibody (AA 75-110)**



[Go to Product page](#)

7 Images

## Overview

Quantity:	0.4 mL
Target:	Bcl-2 (BCL2)
Binding Specificity:	AA 75-110
Reactivity:	Human, Mouse, Rat
Host:	Rabbit
Clonality:	Polyclonal
Conjugate:	This Bcl-2 antibody is un-conjugated
Application:	Western Blotting (WB), Immunohistochemistry (IHC), ELISA, Immunofluorescence (IF)

## Product Details

Immunogen:	A portion of amino acids 75-110 (BH3 binding domain) from the human protein was used as the immunogen for this Bcl-2 antibody.
Isotype:	Ig Fraction
Cross-Reactivity (Details):	Expected species reactivity: Bovine
Purification:	Purified

## Target Details

Target:	Bcl-2 (BCL2)
Alternative Name:	Bcl-2 ( <a href="#">BCL2 Products</a> )
Background:	BCL2 is integral outer mitochondrial membrane protein that blocks the apoptotic death of some

## Target Details

---

cells such as lymphocytes. Constitutive expression of BCL2, such as in the case of translocation of BCL2 to Ig heavy chain locus, is thought to be the cause of follicular lymphoma.

UniProt: [P10415](#)

Pathways: [MAPK Signaling](#), [PI3K-Akt Signaling](#), [Apoptosis](#), [Caspase Cascade in Apoptosis](#), [Regulation of Muscle Cell Differentiation](#), [Cell-Cell Junction Organization](#), [Skeletal Muscle Fiber Development](#), [Autophagy](#), [Smooth Muscle Cell Migration](#), [Negative Regulation of intrinsic apoptotic Signaling](#)

## Application Details

---

Application Notes: Titration of the Bcl-2 antibody may be required due to differences in protocols and secondary/substrate sensitivity.\. Western blot: 1:500,IHC (Paraffin): 1:10-1:50,Immunofluorescence: 1:10-1:50

Restrictions: For Research Use only

## Handling

---

Format: Liquid

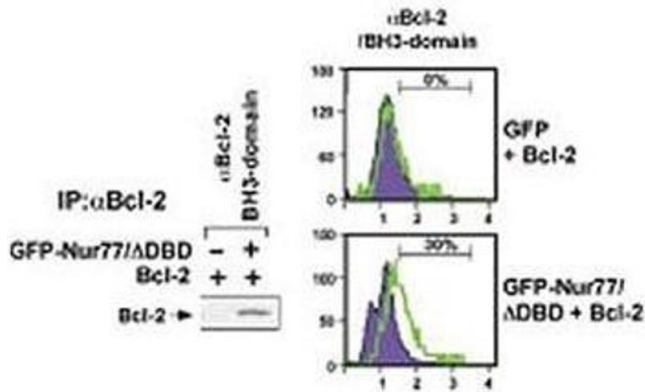
Buffer: In 1X PBS pH 7.4 with 0.09 % sodium azide

Preservative: Sodium azide

Precaution of Use: This product contains Sodium azide: a POISONOUS AND HAZARDOUS SUBSTANCE which should be handled by trained staff only.

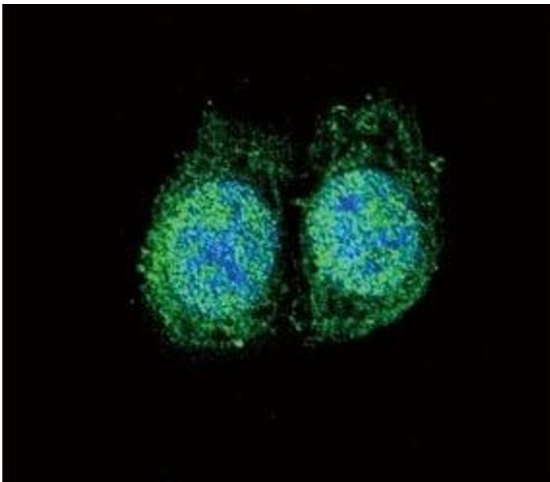
Storage: -20 °C

Storage Comment: Aliquot the Bcl-2 antibody and store frozen at -20°C or colder. Avoid repeated freeze-thaw cycles.



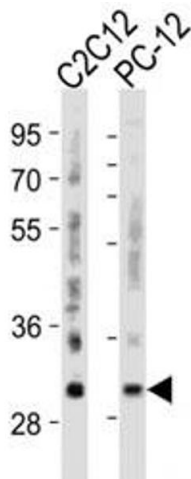
### Western Blotting

**Image 1.** (Left) HEK293 cells transfected with a plasmid coding for a DNA-binding domain-deleted construct of Nur77 (GFP-Nur77/ΔDBD) by using NSJ# F42666 Bcl-2 antibody for IP and a different Bcl-2 antibody for WB. (Right) FACS testing of same transfected cells with



### Immunofluorescence

**Image 2.** Confocal immunofluorescent analysis of Bcl-2 antibody with HeLa cells followed by Alexa Fluor 488-conjugated goat anti-rabbit IgG (green). DAPI was used as a nuclear counterstain (blue).



### Western Blotting

**Image 3.** Western blot analysis of lysate from mouse C2C12, rat PC-12 cell line using Bcl-2 antibody diluted at 1:500 for each lane.

Please check the [product details page](#) for more images. Overall 7 images are available for ABIN3030102.