

Datasheet for ABIN3030105
anti-BCL6 antibody (AA 519-547)

5 Images

[Go to Product page](#)

Overview

Quantity:	0.4 mL
Target:	BCL6
Binding Specificity:	AA 519-547
Reactivity:	Human, Mouse
Host:	Rabbit
Clonality:	Polyclonal
Conjugate:	This BCL6 antibody is un-conjugated
Application:	Western Blotting (WB), Flow Cytometry (FACS), Immunohistochemistry (IHC), ELISA

Product Details

Immunogen:	A portion of amino acids 519-547 from the human protein was used as the immunogen for this BCL6 antibody.
Isotype:	Ig Fraction
Purification:	Antigen affinity purified

Target Details

Target:	BCL6
Alternative Name:	BCL6 (BCL6 Products)
Background:	BCL6 is a zinc finger transcription factor and contains an N-terminal POZ domain. This protein acts as a sequence-specific repressor of transcription, and has been shown to modulate the transcription of START-dependent IL-4 responses of B cells. This protein can interact with a

Target Details

variety of POZ-containing proteins that function as transcription corepressors.

UniProt: [P41182](#)

Pathways: [Chromatin Binding](#), [Regulation of Leukocyte Mediated Immunity](#), [Production of Molecular Mediator of Immune Response](#), [Protein targeting to Nucleus](#)

Application Details

Application Notes: Titration of the BCL6 antibody may be required due to differences in protocols and secondary/substrate sensitivity.\. Western blot: 1:1000,IHC (Paraffin): 1:10-1:50,Flow Cytometry: 1:10-1:50

Restrictions: For Research Use only

Handling

Format: Liquid

Buffer: In 1X PBS, pH 7.4, with 0.09 % sodium azide

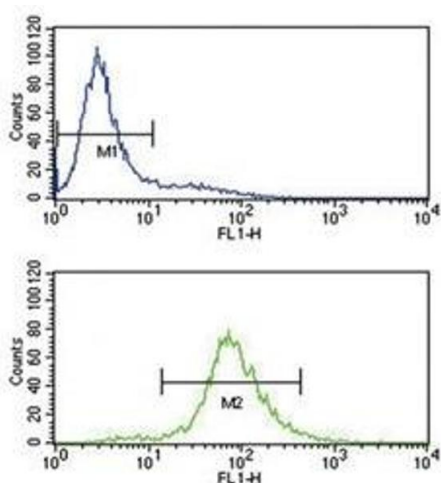
Preservative: Sodium azide

Precaution of Use: This product contains Sodium azide: a POISONOUS AND HAZARDOUS SUBSTANCE which should be handled by trained staff only.

Storage: -20 °C

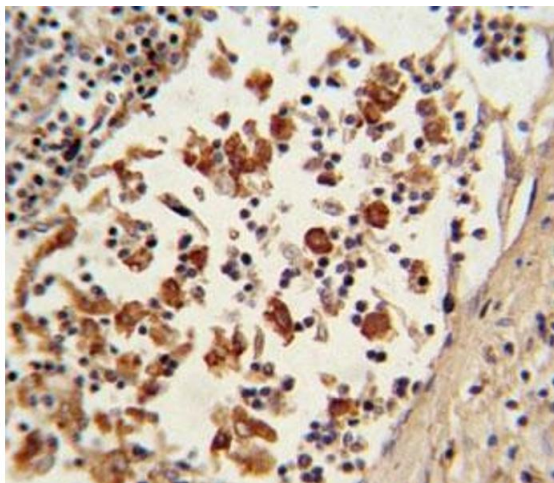
Storage Comment: Aliquot the BCL6 antibody and store frozen at -20°C or colder. Avoid repeated freeze-thaw cycles.

Images



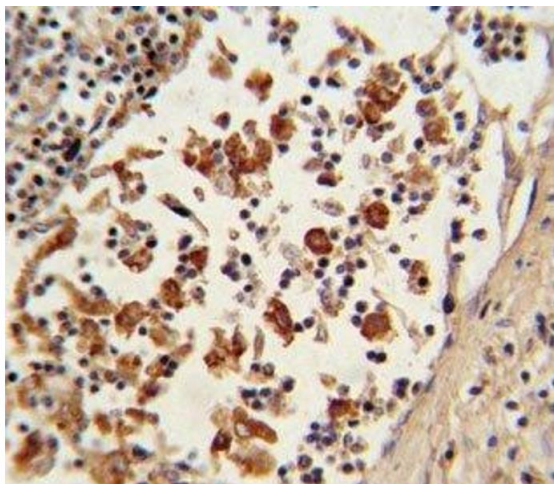
Flow Cytometry

Image 1. BCL6 antibody flow cytometry analysis of Jurkat cells (bottom histogram) compared to a negative control (top histogram). FITC-conjugated goat-anti-rabbit secondary Ab was used for the analysis.



Immunohistochemistry

Image 2. IHC analysis of FFPE human lymph tissue with BCL6 antibody



Immunohistochemistry

Image 3. IHC analysis of FFPE human lymph tissue with BCL6 antibody

Please check the [product details page](#) for more images. Overall 5 images are available for ABIN3030105.