

Datasheet for ABIN3030115  
**anti-BAD antibody (AA 53-81)**



[Go to Product page](#)

3 Images

## Overview

Quantity:	0.4 mL
Target:	BAD
Binding Specificity:	AA 53-81
Reactivity:	Human
Host:	Rabbit
Clonality:	Polyclonal
Conjugate:	This BAD antibody is un-conjugated
Application:	ELISA, Western Blotting (WB), Immunohistochemistry (IHC)

## Product Details

Immunogen:	A portion of amino acids 53-81 from the human protein was used as the immunogen for this Bad antibody.
Purification:	Antigen affinity purified

## Target Details

Target:	BAD
Alternative Name:	Bad ( <a href="#">BAD Products</a> )
Background:	Bad is a member of the BCL-2 family. BCL-2 family members are known to be regulators of programmed cell death. This protein positively regulates cell apoptosis by forming heterodimers with BCL-xL and BCL-2, and reversing their death repressor activity. Proapoptotic activity of this protein is regulated through its phosphorylation. Protein kinases AKT and MAP

## Target Details

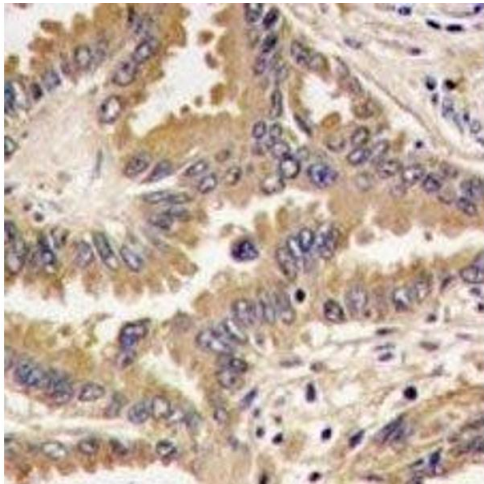
	kinase, as well as protein phosphatase calcineurin were found to be involved in the regulation of this protein.
UniProt:	<a href="#">Q92934</a>
Pathways:	<a href="#">MAPK Signaling</a> , <a href="#">PI3K-Akt Signaling</a> , <a href="#">RTK Signaling</a> , <a href="#">Apoptosis</a> , <a href="#">Fc-epsilon Receptor Signaling Pathway</a> , <a href="#">Positive Regulation of Peptide Hormone Secretion</a> , <a href="#">Carbohydrate Homeostasis</a> , <a href="#">Positive Regulation of Endopeptidase Activity</a> , <a href="#">Regulation of Carbohydrate Metabolic Process</a> , <a href="#">Hepatitis C</a> , <a href="#">CXCR4-mediated Signaling Events</a>

## Application Details

Application Notes:	Titration of the Bad antibody may be required due to differences in protocols and secondary/substrate sensitivity.\. Western blot: 1:1000,IHC (Paraffin): 1:10-1:50
Restrictions:	For Research Use only

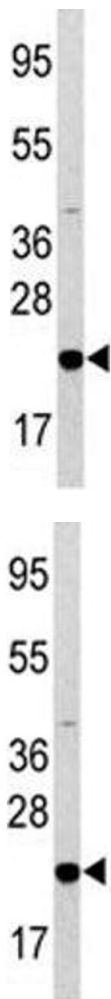
## Handling

Format:	Liquid
Buffer:	In 1X PBS, pH 7.4, with 0.09 % sodium azide
Preservative:	Sodium azide
Precaution of Use:	This product contains Sodium azide: a POISONOUS AND HAZARDOUS SUBSTANCE which should be handled by trained staff only.
Storage:	-20 °C
Storage Comment:	Aliquot the Bad antibody and store frozen at -20°C or colder. Avoid repeated freeze-thaw cycles.



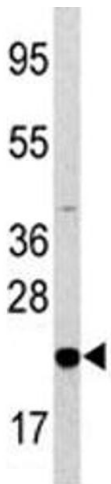
Immunohistochemistry

**Image 1.** IHC analysis of FFPE human lung carcinoma tissue stained with Bad antibody



Western Blotting

**Image 2.** Western blot analysis of Bad antibody and HL-60 lysate. Predicted molecular weight: 19-23 kDa



Western Blotting

**Image 3.** Western blot analysis of Bad antibody and HL-60 lysate. Predicted molecular weight: 19-23 kDa