

Datasheet for ABIN3030147
anti-BIM antibody (AA 130-165)



[Go to Product page](#)

3 Images

Overview

Quantity:	0.4 mL
Target:	BIM (BCL2L11)
Binding Specificity:	AA 130-165
Reactivity:	Human
Host:	Rabbit
Clonality:	Polyclonal
Conjugate:	This BIM antibody is un-conjugated
Application:	Western Blotting (WB), Immunohistochemistry (IHC), ELISA

Product Details

Immunogen:	A portion of amino acids 130-165 from the human protein was used as the immunogen for this Bim antibody.
Isotype:	Ig Fraction
Purification:	Purified

Target Details

Target:	BIM (BCL2L11)
Alternative Name:	Bim (BCL2L11 Products)
Background:	Bim belongs to the BCL-2 protein family. BCL-2 family members form hetero- or homodimers and act as anti- or pro-apoptotic regulators that are involved in a wide variety of cellular activities. Bim contains a Bcl-2 homology domain 3 (BH3). It has been shown to interact with

Target Details

other members of the BCL-2 protein family, including BCL2, BCL2L1/BCL-X(L), and MCL1, and to act as an apoptotic activator. The expression of this gene can be induced by nerve growth factor (NGF), as well as by the forkhead transcription factor FKHR-L1, which suggests a role of this gene in neuronal and lymphocyte apoptosis. Transgenic studies of the mouse counterpart suggested that this gene functions as an essential initiator of apoptosis in thymocyte-negative selection.

UniProt: [O43521](#)

Pathways: [PI3K-Akt Signaling](#), [Neurotrophin Signaling Pathway](#), [Tube Formation](#), [Positive Regulation of Endopeptidase Activity](#)

Application Details

Application Notes: Titration of the Bim antibody may be required due to differences in protocols and secondary/substrate sensitivity.\. Western blot: 1:1000,IHC (Paraffin): 1:50-1:100

Restrictions: For Research Use only

Handling

Format: Liquid

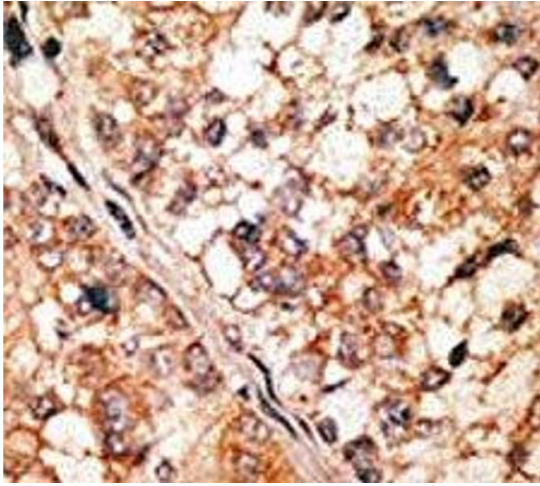
Buffer: In 1X PBS, pH 7.4, with 0.09 % sodium azide

Preservative: Sodium azide

Precaution of Use: This product contains Sodium azide: a POISONOUS AND HAZARDOUS SUBSTANCE which should be handled by trained staff only.

Storage: -20 °C

Storage Comment: Aliquot the Bim antibody and store frozen at -20°C or colder. Avoid repeated freeze-thaw cycles.



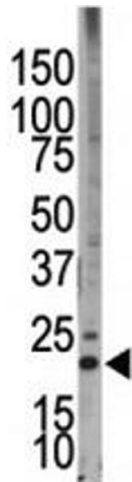
Immunohistochemistry

Image 1. IHC analysis of FFPE human hepatocarcinoma tissue stained with the Bim antibody



Western Blotting

Image 2. Western blot testing of Bim antibody and HL-60 cell lysate



Western Blotting

Image 3. Western blot testing of Bim antibody and HL-60 cell lysate