



Datasheet for ABIN3030159
anti-BACE1 antibody (AA 38-70)



[Go to Product page](#)

3 Images

Overview

Quantity:	0.4 mL
Target:	BACE1
Binding Specificity:	AA 38-70
Reactivity:	Human, Mouse
Host:	Rabbit
Clonality:	Polyclonal
Conjugate:	This BACE1 antibody is un-conjugated
Application:	Western Blotting (WB), ELISA, Immunohistochemistry (IHC)

Product Details

Immunogen:	A portion of amino acids 38-70 from the human protein was used as the immunogen for this BACE1 antibody.
Isotype:	Ig Fraction
Cross-Reactivity (Details):	Expected species reactivity: Rat, Bovine
Purification:	Purified

Target Details

Target:	BACE1
Alternative Name:	BACE1 (BACE1 Products)
Background:	Responsible for the proteolytic processing of the amyloid precursor protein (APP). Cleaves at

Target Details

the N-terminus of the A-beta peptide sequence, between residues 671 and 672 of APP, leads to the generation and extracellular release of beta-cleaved soluble APP, and a corresponding cell-associated C-terminal fragment which is later released by gamma-secretase. [UniProt]

UniProt: [P56817](#)

Application Details

Application Notes: The stated application concentrations are suggested starting amounts. Titration of the BACE1 antibody may be required due to differences in protocols and secondary/substrate sensitivity.\.
Western blot: 1:1000,IHC (Paraffin): 1:10-1:50

Restrictions: For Research Use only

Handling

Format: Liquid

Buffer: In 1X PBS, pH 7.4, with 0.09 % sodium azide

Preservative: Sodium azide

Precaution of Use: This product contains Sodium azide: a POISONOUS AND HAZARDOUS SUBSTANCE which should be handled by trained staff only.

Storage: -20 °C

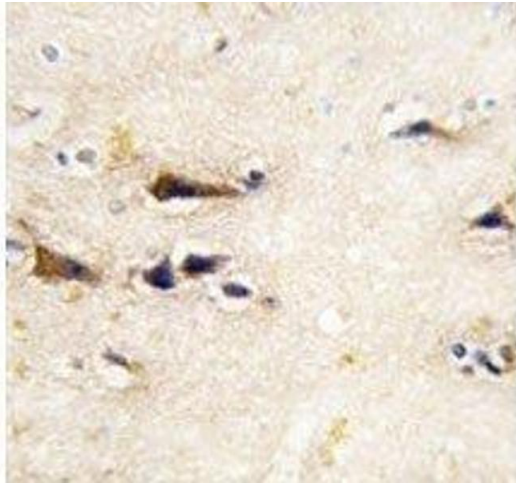
Storage Comment: Store at 4°C for up to one month. For long term, aliquot the BACE1 antibody and store frozen at -20°C or colder. Avoid repeated freeze-thaw cycles.

Images



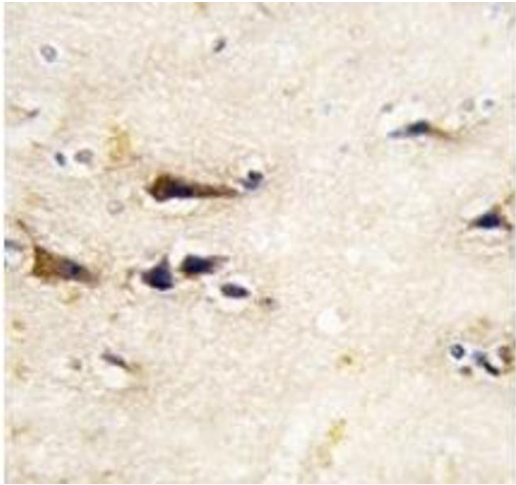
Western Blotting

Image 1. Western blot analysis of BACE1 antibody and mouse heart tissue lysate.



Immunohistochemistry

Image 2. IHC analysis of FFPE human brain tissue stained with BACE1 antibody



Immunohistochemistry

Image 3. IHC analysis of FFPE human brain tissue stained with BACE1 antibody