

Datasheet for ABIN3030161
anti-BID antibody (AA 39-68)

5 Images

[Go to Product page](#)

Overview

| | |
|----------------------|---|
| Quantity: | 0.4 mL |
| Target: | BID |
| Binding Specificity: | AA 39-68 |
| Reactivity: | Mouse |
| Host: | Rabbit |
| Clonality: | Polyclonal |
| Conjugate: | This BID antibody is un-conjugated |
| Application: | Western Blotting (WB), ELISA, Immunohistochemistry (IHC), Flow Cytometry (FACS) |

Product Details

| | |
|---------------|--|
| Immunogen: | A portion of amino acids 39-68 from the mouse protein was used as the immunogen for this Bid antibody. |
| Isotype: | Ig Fraction |
| Purification: | Antigen affinity purified |

Target Details

| | |
|-------------------|--|
| Target: | BID |
| Alternative Name: | Bid (BID Products) |
| Background: | Bid is a death agonist that heterodimerizes with either agonist BAX or antagonist BCL2. Bid is a member of the BCL-2 family of cell death regulators. It is a mediator of mitochondrial damage induced by caspase-8 (CASP8), CASP8 cleaves this encoded protein, and the COOH-terminal |

Target Details

part translocates to mitochondria where it triggers cytochrome c release.

UniProt: [P70444](#)

Pathways: [Apoptosis](#), [Caspase Cascade in Apoptosis](#), [Positive Regulation of Endopeptidase Activity](#)

Application Details

Application Notes: Titration of the Bid antibody may be required due to differences in protocols and secondary/substrate sensitivity.\. Western blot: 1:1000,IHC (Paraffin): 1:50-1:100,Flow Cytometry: 1:10-1:50

Restrictions: For Research Use only

Handling

Format: Liquid

Buffer: In 1X PBS, pH 7.4, with 0.09 % sodium azide

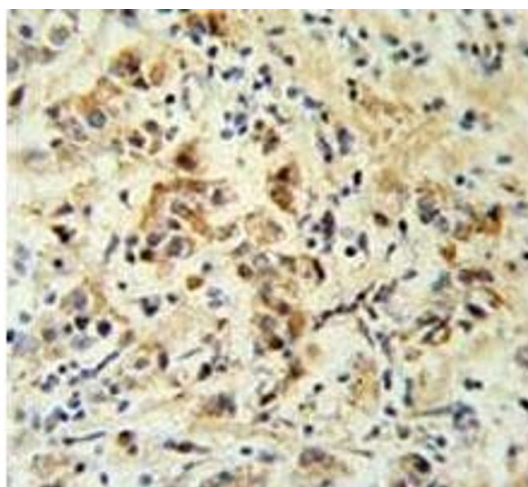
Preservative: Sodium azide

Precaution of Use: This product contains Sodium azide: a POISONOUS AND HAZARDOUS SUBSTANCE which should be handled by trained staff only.

Storage: -20 °C

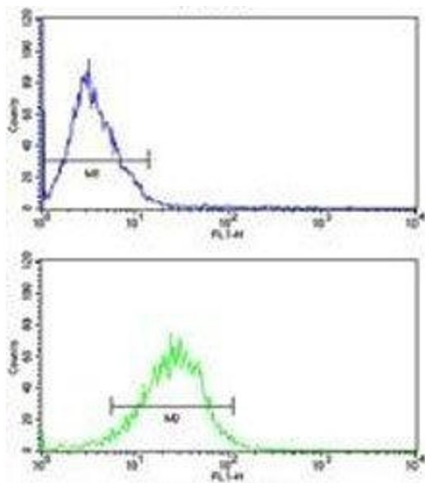
Storage Comment: Aliquot the Bid antibody and store frozen at -20°C or colder. Avoid repeated freeze-thaw cycles.

Images



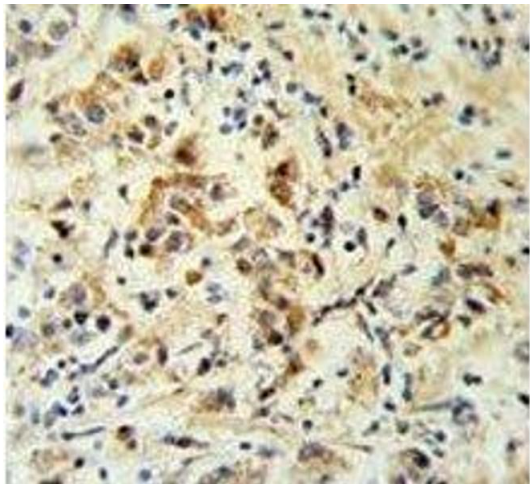
Immunohistochemistry

Image 1. Bid antibody IHC analysis in formalin fixed and paraffin embedded human breast carcinoma.



Flow Cytometry

Image 2. Bid antibody flow analysis of MCF-7 cells (bottom histogram) compared to a negative control (top histogram). FITC-conjugated goat-anti-rabbit secondary Ab was used for the analysis.



Immunohistochemistry

Image 3. Bid antibody IHC analysis in formalin fixed and paraffin embedded human breast carcinoma.

Please check the [product details page](#) for more images. Overall 5 images are available for ABIN3030161.