

Datasheet for ABIN3030175
anti-BMP1 antibody (AA 957-986)

3 Images

[Go to Product page](#)

Overview

Quantity:	0.4 mL
Target:	BMP1
Binding Specificity:	AA 957-986
Reactivity:	Mouse
Host:	Rabbit
Clonality:	Polyclonal
Conjugate:	This BMP1 antibody is un-conjugated
Application:	Western Blotting (WB), Immunohistochemistry (IHC), ELISA

Product Details

Immunogen:	A portion of amino acids 957-986 from the human protein was used as the immunogen for this BMP1 antibody.
Isotype:	Ig Fraction
Purification:	Purified

Target Details

Target:	BMP1
Alternative Name:	BMP1 (BMP1 Products)
Background:	<p>The BMP1 locus encodes a protein that is capable of inducing formation of cartilage in vivo.</p> <p>Although other bone morphogenetic proteins are members of the TGF-beta superfamily, BMP1 encodes a protein that is not closely related to other known growth factors. BMP1 protein and</p>

Target Details

procollagen C proteinase (PCP), a secreted metalloprotease requiring calcium and needed for cartilage and bone formation, are identical. PCP or BMP1 protein cleaves the C-terminal propeptides of procollagen I, II, and III and its activity is increased by the procollagen C-endopeptidase enhancer protein. The BMP1 gene is expressed as alternatively spliced variants that share an N-terminal protease domain but differ in their C-terminal region.

UniProt: [P13497](#)

Pathways: [Lipid Metabolism](#)

Application Details

Application Notes: Titration of the BMP1 antibody may be required due to differences in protocols and secondary/substrate sensitivity. IHC (Paraffin): 1:50-1:100, Western blot: 1:1000

Restrictions: For Research Use only

Handling

Format: Liquid

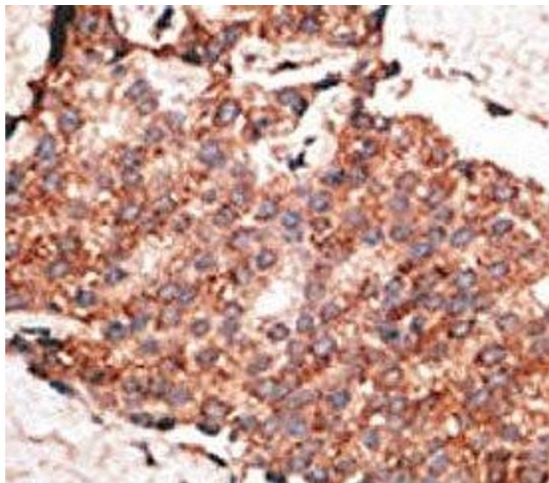
Buffer: In 1X PBS, pH 7.4, with 0.09 % sodium azide

Preservative: Sodium azide

Precaution of Use: This product contains Sodium azide: a POISONOUS AND HAZARDOUS SUBSTANCE which should be handled by trained staff only.

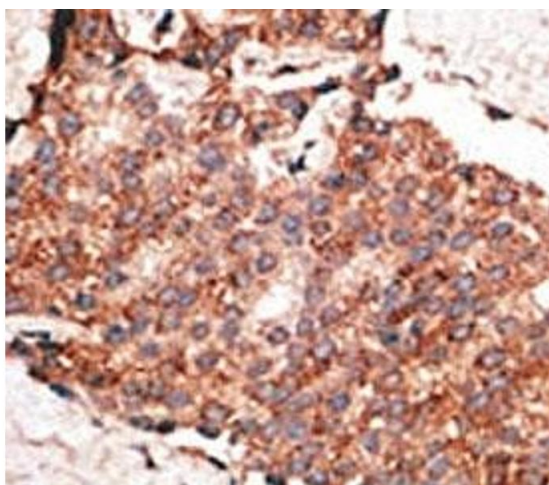
Storage: -20 °C

Storage Comment: Aliquot the BMP1 antibody and store frozen at -20°C or colder. Avoid repeated freeze-thaw cycles.



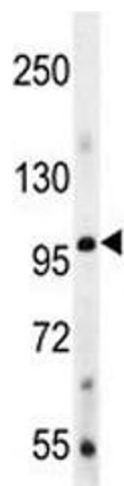
Immunohistochemistry

Image 1. IHC analysis of FFPE human breast carcinoma tissue stained with the BMP1 antibody



Immunohistochemistry

Image 2. IHC analysis of FFPE human breast carcinoma tissue stained with the BMP1 antibody



Western Blotting

Image 3. BMP1 antibody western blot analysis in mouse liver tissue lysate