



[Go to Product page](#)

Datasheet for ABIN3030176
anti-BMP3 antibody (AA 8-36)

5 Images

Overview

Quantity:	0.4 mL
Target:	BMP3
Binding Specificity:	AA 8-36
Reactivity:	Human
Host:	Rabbit
Clonality:	Polyclonal
Conjugate:	This BMP3 antibody is un-conjugated
Application:	Western Blotting (WB), ELISA, Immunohistochemistry (IHC)

Product Details

Immunogen:	A portion of amino acids 8-36 from the human protein was used as the immunogen for this BMP3 antibody.
Isotype:	Ig Fraction
Purification:	Purified

Target Details

Target:	BMP3
Alternative Name:	BMP3 (BMP3 Products)
Background:	The BMPs belong to the TGF-Beta superfamily. BMPs stimulate the production of bone matrix proteins and thereby alter stromal cell and osteoclast proliferation, a key step in bone marrow development. In addition to promoting ectopic bone and cartilage development, BMPs regulate

Target Details

the growth, differentiation, chemotaxis, proliferation, and apoptosis of various cell types, including mesenchymal cells, epithelial cells, hematopoietic cells, and neuronal cells. BMPs also play a role in dorsal/ventral patterning. BMP3, highly expressed in lung, ovary and small intestine, participates in cartilage and bone formation. BMP3 and BMP2 genes map to conserved regions between human and mouse.

UniProt: [P12645](#)

Application Details

Application Notes: Titration of the BMP3 antibody may be required due to differences in protocols and secondary/substrate sensitivity.\. Western blot: 1:1000,IHC (Paraffin): 1:50-1:100

Restrictions: For Research Use only

Handling

Format: Liquid

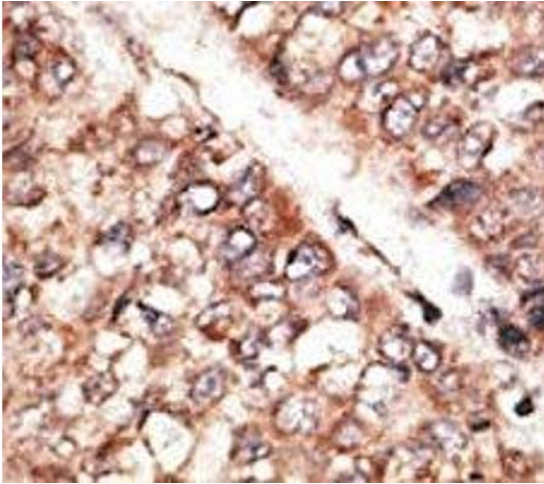
Buffer: In 1X PBS, pH 7.4, with 0.09 % sodium azide

Preservative: Sodium azide

Precaution of Use: This product contains Sodium azide: a POISONOUS AND HAZARDOUS SUBSTANCE which should be handled by trained staff only.

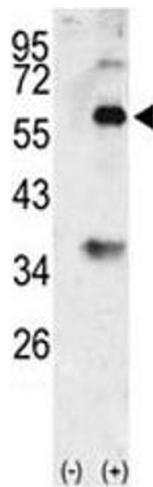
Storage: -20 °C

Storage Comment: Aliquot the BMP3 antibody and store frozen at -20°C or colder. Avoid repeated freeze-thaw cycles.



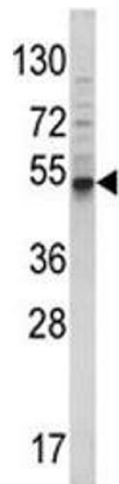
Immunohistochemistry

Image 1. IHC analysis of FFPE human hepatocarcinoma tissue stained with the BMP3 antibody



Western Blotting

Image 2. Western blot analysis of BMP3 antibody and 293 cell lysate (2 ug/lane) either nontransfected (Lane 1) or transiently transfected with the BMP3 gene (2).



Western Blotting

Image 3. Western blot analysis of BMP3 antibody and 293 lysate. Predicted molecular weight ~55 kDa.

Please check the [product details page](#) for more images. Overall 5 images are available for ABIN3030176.