

Datasheet for ABIN3030179
anti-BMP6 antibody (AA 25-55)[Go to Product page](#)

3 Images

Overview

Quantity:	0.4 mL
Target:	BMP6
Binding Specificity:	AA 25-55
Reactivity:	Human
Host:	Rabbit
Clonality:	Polyclonal
Conjugate:	This BMP6 antibody is un-conjugated
Application:	Western Blotting (WB), ELISA, Immunohistochemistry (IHC)

Product Details

Immunogen:	A portion of amino acids 25-55 from the human protein was used as the immunogen for this BMP6 antibody.
Isotype:	Ig Fraction
Purification:	Purified

Target Details

Target:	BMP6
Alternative Name:	BMP6 (BMP6 Products)
Background:	The bone morphogenetic proteins (BMPs) are a family of secreted signaling molecules that can induce ectopic bone growth. Many BMPs are part of the transforming growth factor-beta (TGFB) superfamily. BMPs were originally identified by an ability of demineralized bone extract

Target Details

to induce endochondral osteogenesis in vivo in an extraskeletal site. Based on its expression early in embryogenesis, Bmp6 has a proposed role in early development. In addition, the fact that BMP6 is closely related to BMP5 and BMP7 has lead to speculation of possible bone inductive activity.

UniProt: [P22004](#)

Pathways: [Regulation of Hormone Metabolic Process](#), [Regulation of Hormone Biosynthetic Process](#)

Application Details

Application Notes: Titration of the BMP6 antibody may be required due to differences in protocols and secondary/substrate sensitivity.\. Western blot: 1:1000,IHC (Paraffin): 1:10-1:50

Restrictions: For Research Use only

Handling

Format: Liquid

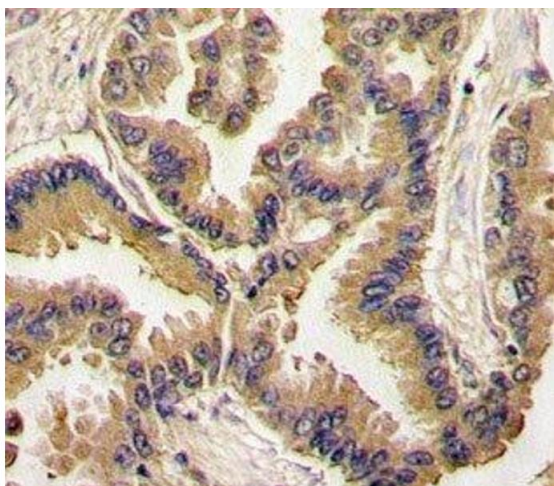
Buffer: In 1X PBS, pH 7.4, with 0.09 % sodium azide

Preservative: Sodium azide

Precaution of Use: This product contains Sodium azide: a POISONOUS AND HAZARDOUS SUBSTANCE which should be handled by trained staff only.

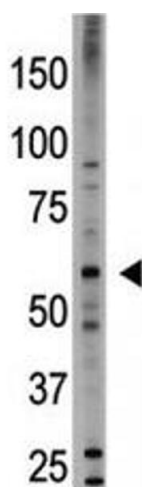
Storage: -20 °C

Storage Comment: Aliquot the BMP6 antibody and store frozen at -20°C or colder. Avoid repeated freeze-thaw cycles.



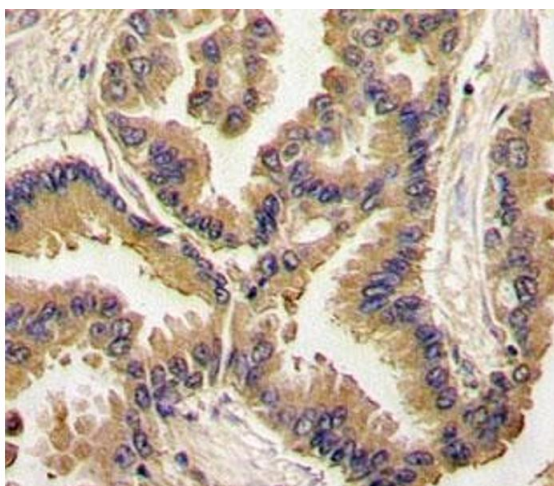
Immunohistochemistry

Image 1. IHC analysis of FFPE human lung carcinoma tissue stained with BMP6 antibody



Western Blotting

Image 2. Western blot testing of BMP6 antibody and HL-60 cell lysate



Immunohistochemistry

Image 3. IHC analysis of FFPE human lung carcinoma tissue stained with BMP6 antibody