

Datasheet for ABIN3030180
anti-BMP7 antibody (AA 280-309)

5 Images

[Go to Product page](#)

Overview

Quantity:	0.4 mL
Target:	BMP7
Binding Specificity:	AA 280-309
Reactivity:	Human, Mouse
Host:	Rabbit
Clonality:	Polyclonal
Conjugate:	This BMP7 antibody is un-conjugated
Application:	Western Blotting (WB), Immunohistochemistry (IHC), ELISA

Product Details

Immunogen:	A portion of amino acids 280-309 from the human protein was used as the immunogen for this BMP7 antibody.
Isotype:	Ig Fraction
Purification:	Antigen affinity purified

Target Details

Target:	BMP7
Alternative Name:	BMP7 (BMP7 Products)
Background:	The bone morphogenetic proteins (BMPs) are a family of secreted signaling molecules that can induce ectopic bone growth. Many BMPs are part of the transforming growth factor-beta (TGFB) superfamily. BMPs were originally identified by an ability of demineralized bone extract

Target Details

to induce endochondral osteogenesis in vivo in an extraskeletal site. Based on its expression early in embryogenesis, the BMP encoded by this gene has a proposed role in early development and possible bone inductive activity. [provided by RefSeq].

UniProt: [P18075](#)

Pathways: [Steroid Hormone Mediated Signaling Pathway](#), [Stem Cell Maintenance](#)

Application Details

Application Notes: Titration of the BMP7 antibody may be required due to differences in protocols and secondary/substrate sensitivity.\. Western blot: 1:1000,IHC (Paraffin): 1:10-1:50

Restrictions: For Research Use only

Handling

Format: Liquid

Buffer: In 1X PBS, pH 7.4, with 0.09 % sodium azide

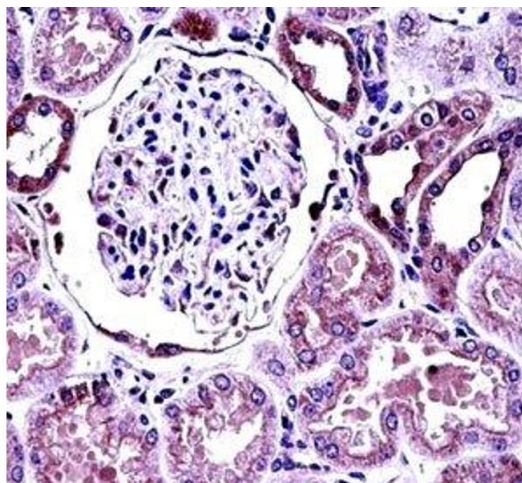
Preservative: Sodium azide

Precaution of Use: This product contains Sodium azide: a POISONOUS AND HAZARDOUS SUBSTANCE which should be handled by trained staff only.

Storage: -20 °C

Storage Comment: Aliquot the BMP7 antibody and store frozen at -20°C or colder. Avoid repeated freeze-thaw cycles.

Images



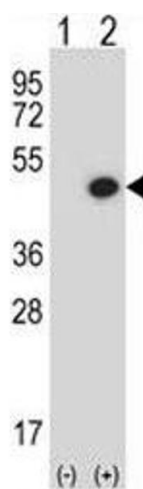
Immunohistochemistry

Image 1. BMP7 antibody immunohistochemistry analysis in formalin fixed and paraffin embedded human kidney tissue.



Western Blotting

Image 2. BMP7 antibody western blot analysis in mouse heart tissue lysate. Predicted molecular weight: 47 kDa protein cleaved into ~33 and ~15 kDa segments.



Western Blotting

Image 3. Western blot analysis of BMP7 antibody and 293 cell lysate either nontransfected (Lane 1) or transiently transfected (2) with the BMP7 gene. Predicted molecular weight: 47 kDa protein cleaved into ~33 and ~15 kDa segments.

Please check the [product details page](#) for more images. Overall 5 images are available for ABIN3030180.