



[Go to Product page](#)

Datasheet for ABIN3030183
anti-BMPR1A antibody (AA 166-196)

3 Images

Overview

Quantity:	0.4 mL
Target:	BMPR1A
Binding Specificity:	AA 166-196
Reactivity:	Human, Mouse
Host:	Rabbit
Clonality:	Polyclonal
Application:	Western Blotting (WB), ELISA, Immunohistochemistry (IHC)

Product Details

Immunogen:	A portion of amino acids 166-196 from the human protein was used as the immunogen for this BMPR1A antibody.
Isotype:	Ig Fraction
Purification:	Purified

Target Details

Target:	BMPR1A
Alternative Name:	BMPR1A (BMPR1A Products)
Background:	The bone morphogenetic protein (BMP) receptors are a family of transmembrane serine/threonine kinases that include the type I receptors BMPR1A and BMPR1B and the type II receptor BMPR2. These receptors are also closely related to the activin receptors, ACVR1 and ACVR2. The ligands of these receptors are members of the TGF-beta superfamily. TGF-betas

Target Details

and activins transduce their signals through the formation of heteromeric complexes with 2 different types of serine (threonine) kinase receptors: type I receptors of about 50-55 kD and type II receptors of about 70-80 kD. Type II receptors bind ligands in the absence of type I receptors, but they require their respective type I receptors for signaling, whereas type I receptors require their respective type II receptors for ligand binding.

UniProt: [P36894](#)

Pathways: [Stem Cell Maintenance](#)

Application Details

Application Notes: Titration of the BMPR1A antibody may be required due to differences in protocols and secondary/substrate sensitivity.\. Western blot: 1:1000,IHC (Paraffin): 1:50-1:100

Restrictions: For Research Use only

Handling

Format: Liquid

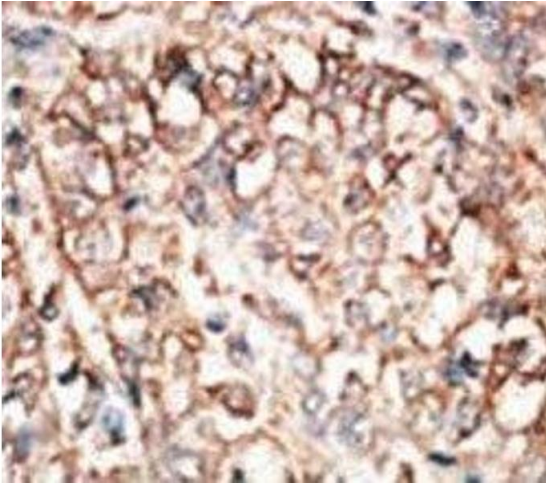
Buffer: In 1X PBS, pH 7.4, with 0.09 % sodium azide

Preservative: Sodium azide

Precaution of Use: This product contains Sodium azide: a POISONOUS AND HAZARDOUS SUBSTANCE which should be handled by trained staff only.

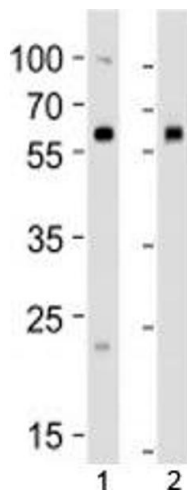
Storage: -20 °C

Storage Comment: Aliquot the BMPR1A antibody and store frozen at -20°C or colder. Avoid repeated freeze-thaw cycles.



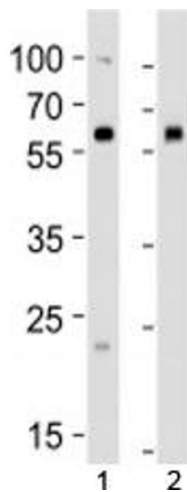
Immunohistochemistry

Image 1. IHC analysis of FFPE human hepatocarcinoma tissue stained with the BMPR1A antibody



Western Blotting

Image 2. Western blot analysis of lysate from 1) human 293 and 2) mouse NIH3T3 cell line using BMPR1A antibody at 1:1000. Predicted molecular weight ~60 kDa.



Western Blotting

Image 3. Western blot analysis of lysate from 1) human 293 and 2) mouse NIH3T3 cell line using BMPR1A antibody at 1:1000. Predicted molecular weight ~60 kDa.