

Datasheet for ABIN3030188
anti-BMPR1B antibody (AA 134-162)[Go to Product page](#)

3 Images

Overview

Quantity:	0.4 mL
Target:	BMPR1B
Binding Specificity:	AA 134-162
Reactivity:	Human
Host:	Rabbit
Clonality:	Polyclonal
Conjugate:	This BMPR1B antibody is un-conjugated
Application:	Western Blotting (WB), ELISA, Immunohistochemistry (IHC)

Product Details

Immunogen:	A portion of amino acids 134-162 from the human protein was used as the immunogen for this BMPR1B antibody.
Isotype:	Ig Fraction
Purification:	Antigen affinity purified

Target Details

Target:	BMPR1B
Alternative Name:	BMPR1B (BMPR1B Products)
Background:	This gene encodes a member of the bone morphogenetic protein (BMP) receptor family of transmembrane serine/threonine kinases. The ligands of this receptor are BMPs, which are members of the TGF-beta superfamily. BMPs are involved in endochondral bone formation and

Target Details

embryogenesis. These proteins transduce their signals through the formation of heteromeric complexes of 2 different types of serine (threonine) kinase receptors: type I receptors of about 50-55 kD and type II receptors of about 70-80 kD. Type II receptors bind ligands in the absence of type I receptors, but they require their respective type I receptors for signaling, whereas type I receptors require their respective type II receptors for ligand binding. Mutations in this gene have been associated with primary pulmonary hypertension.

UniProt: [O00238](#)

Application Details

Application Notes: Titration of the BMPR1B antibody may be required due to differences in protocols and secondary/substrate sensitivity.\. Western blot: 1:1000,IHC (Paraffin): 1:10-1:50

Restrictions: For Research Use only

Handling

Format: Liquid

Buffer: In 1X PBS, pH 7.4, with 0.09 % sodium azide

Preservative: Sodium azide

Precaution of Use: This product contains Sodium azide: a POISONOUS AND HAZARDOUS SUBSTANCE which should be handled by trained staff only.

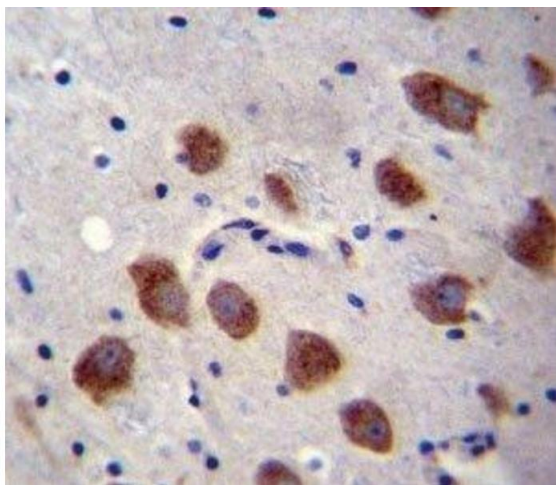
Storage: -20 °C

Storage Comment: Aliquot the BMPR1B antibody and store frozen at -20°C or colder. Avoid repeated freeze-thaw cycles.



Western Blotting

Image 1. BMPR1B antibody western blot analysis in U251 lysate. Predicted molecular weight 55~60 kDa.



Immunohistochemistry

Image 2. BMPR1B antibody immunohistochemistry analysis in formalin fixed and paraffin embedded human brain tissue.



Western Blotting

Image 3. BMPR1B antibody western blot analysis in U251 lysate. Predicted molecular weight 55~60 kDa.