

Datasheet for ABIN3030191
anti-BMPR1B antibody (AA 472-502)[Go to Product page](#)

3 Images

Overview

Quantity:	0.4 mL
Target:	BMPR1B
Binding Specificity:	AA 472-502
Reactivity:	Human
Host:	Rabbit
Clonality:	Polyclonal
Conjugate:	This BMPR1B antibody is un-conjugated
Application:	Western Blotting (WB), ELISA, Immunohistochemistry (IHC)

Product Details

Immunogen:	A portion of amino acids 472-502 from the human protein was used as the immunogen for this BMPR1B antibody.
Isotype:	Ig Fraction
Cross-Reactivity (Details):	Expected species reactivity: Mouse, Chicken
Purification:	Purified

Target Details

Target:	BMPR1B
Alternative Name:	BMPR1B (BMPR1B Products)
Background:	The bone morphogenetic protein (BMP) receptors are a family of transmembrane

Target Details

serine/threonine kinases that include the type I receptors BMPR1A and BMPR1B and the type II receptor BMPR2. These receptors are also closely related to the activin receptors, ACVR1 and ACVR2. The ligands of these receptors are members of the TGF-beta superfamily. TGF-betas and activins transduce their signals through the formation of heteromeric complexes with 2 different types of serine (threonine) kinase receptors: type I receptors of about 50-55 kD and type II receptors of about 70-80 kD. Type II receptors bind ligands in the absence of type I receptors, but they require their respective type I receptors for signaling, whereas type I receptors require their respective type II receptors for ligand binding.

UniProt: [O00238](#)

Application Details

Application Notes: Titration of the BMPR1B antibody may be required due to differences in protocols and secondary/substrate sensitivity.\. Western blot: 1:1000,IHC (Paraffin): 1:50-1:100

Restrictions: For Research Use only

Handling

Format: Liquid

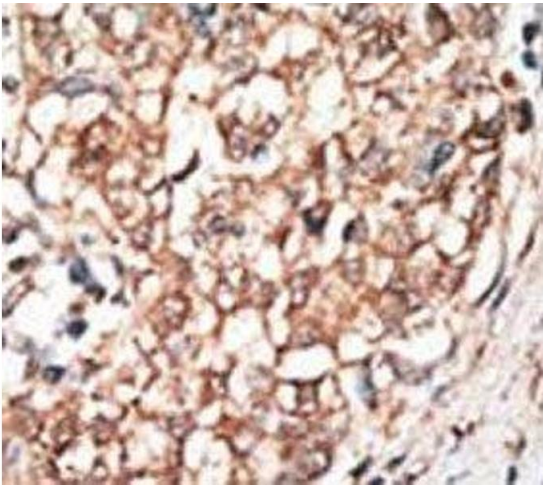
Buffer: In 1X PBS, pH 7.4, with 0.09 % sodium azide

Preservative: Sodium azide

Precaution of Use: This product contains Sodium azide: a POISONOUS AND HAZARDOUS SUBSTANCE which should be handled by trained staff only.

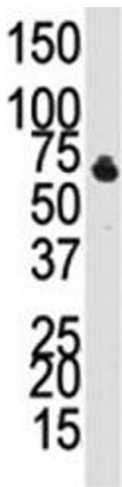
Storage: -20 °C

Storage Comment: Aliquot the BMPR1B antibody and store frozen at -20°C or colder. Avoid repeated freeze-thaw cycles.



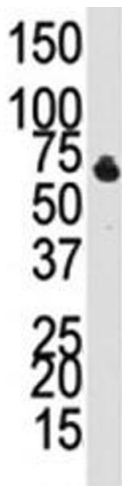
Immunohistochemistry

Image 1. IHC analysis of FFPE human hepatocarcinoma tissue stained with the BMPR1B antibody



Western Blotting

Image 2. Western blot analysis of BMPR1B antibody and NCI-H460 cell lysate. Predicted molecular weight 55-60 kDa.



Western Blotting

Image 3. Western blot analysis of BMPR1B antibody and NCI-H460 cell lysate. Predicted molecular weight 55-60 kDa.