



[Go to Product page](#)

Datasheet for ABIN3030196  
**anti-BDNF antibody (AA 206-236)**

7 Images

### Overview

Quantity:	0.4 mL
Target:	BDNF
Binding Specificity:	AA 206-236
Reactivity:	Human
Host:	Rabbit
Clonality:	Polyclonal
Conjugate:	This BDNF antibody is un-conjugated
Application:	Western Blotting (WB), Immunohistochemistry (IHC), ELISA, Immunofluorescence (IF), Flow Cytometry (FACS)

### Product Details

Immunogen:	A portion of amino acids 206-236 from the human protein was used as the immunogen for this BDNF antibody.
Isotype:	Ig Fraction
Cross-Reactivity (Details):	Expected species reactivity: Mouse, Rat, Bovine, Pig
Purification:	Purified

### Target Details

Target:	BDNF
Alternative Name:	BDNF ( <a href="#">BDNF Products</a> )

## Target Details

---

**Background:** BDNF is a member of the nerve growth factor family. It is induced by cortical neurons, and is necessary for survival of striatal neurons in the brain. Expression of this protein is reduced in both Alzheimer's and Huntington disease patients. This protein may play a role in the regulation of stress response and in the biology of mood disorders.

---

**UniProt:** [P23560](#)

---

**Pathways:** [RTK Signaling](#), [Synaptic Membrane](#), [Feeding Behaviour](#), [Dicarboxylic Acid Transport](#), [Regulation of long-term Neuronal Synaptic Plasticity](#)

---

## Application Details

---

**Application Notes:** Titration of the BDNF antibody may be required due to differences in protocols and secondary/substrate sensitivity.\. Western blot: 1:1000,IHC (Paraffin): 1:10-1:50,Immunofluorescence: 1:10-1:50,Flow Cytometry: 1:10-1:50

---

**Restrictions:** For Research Use only

---

## Handling

---

**Format:** Liquid

---

**Buffer:** In 1X PBS pH 7.4 with 0.09 % sodium azide

---

**Preservative:** Sodium azide

---

**Precaution of Use:** This product contains Sodium azide: a POISONOUS AND HAZARDOUS SUBSTANCE which should be handled by trained staff only.

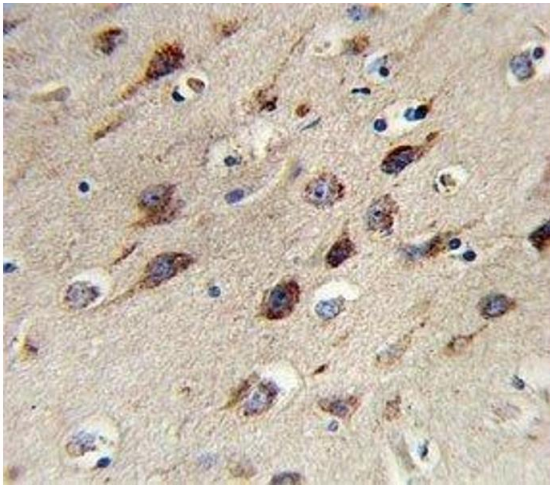
---

**Storage:** -20 °C

---

**Storage Comment:** Aliquot the BDNF antibody and store frozen at -20°C or colder. Avoid repeated freeze-thaw cycles.

---



### Immunohistochemistry

**Image 1.** IHC analysis of FFPE human brain stained with BDNF antibody



### Western Blotting

**Image 2.** Western blot analysis of BDNF antibody and CEM lysate.

### Western Blotting

**Image 3.** Western blot analysis of BDNF antibody and CEM lysate.

Please check the [product details page](#) for more images. Overall 7 images are available for ABIN3030196.