

Datasheet for ABIN3030216
anti-CCR1 antibody (AA 1-30)

5 Images

[Go to Product page](#)

Overview

Quantity:	0.4 mL
Target:	CCR1
Binding Specificity:	AA 1-30
Reactivity:	Human
Host:	Rabbit
Clonality:	Polyclonal
Conjugate:	This CCR1 antibody is un-conjugated
Application:	ELISA, Western Blotting (WB), Flow Cytometry (FACS), Immunohistochemistry (IHC)

Product Details

Immunogen:	A portion of amino acids 1-30 from the human protein was used as the immunogen for this CCR1 antibody.
Isotype:	Ig Fraction
Purification:	Antigen affinity purified

Target Details

Target:	CCR1
Alternative Name:	CCR1 (CCR1 Products)
Background:	CCR1 encodes a member of the beta chemokine receptor family, which is predicted to be a seven transmembrane protein similar to G protein-coupled receptors. The ligands of this receptor include macrophage inflammatory protein 1 alpha (MIP-1 alpha), regulated on

Target Details

activation normal T expressed and secreted protein (RANTES), monocyte chemoattractant protein 3 (MCP-3), and myeloid progenitor inhibitory factor-1 (MPIF-1). Chemokines and their receptors mediated signal transduction are critical for the recruitment of effector immune cells to the site of inflammation. Knockout studies of the mouse homolog suggested the roles of this gene in host protection from inflammatory response, and susceptibility to virus and parasite. This gene and other chemokine receptor genes, including CCR2, CCRL2, CCR3, CCR5 and CXCR1, are found to form a gene cluster on chromosome 3p.

UniProt: [P32246](#)

Application Details

Application Notes: Titration of the CCR1 antibody may be required due to differences in protocols and secondary/substrate sensitivity.\. Western blot: 1:1000,IHC (Paraffin): 1:50-1:100,Flow Cytometry: 1:10-1:50

Restrictions: For Research Use only

Handling

Format: Liquid

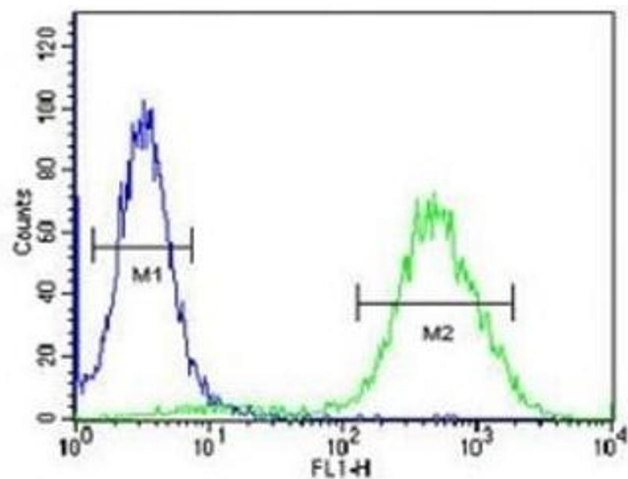
Buffer: In 1X PBS, pH 7.4, with 0.09 % sodium azide

Preservative: Sodium azide

Precaution of Use: This product contains Sodium azide: a POISONOUS AND HAZARDOUS SUBSTANCE which should be handled by trained staff only.

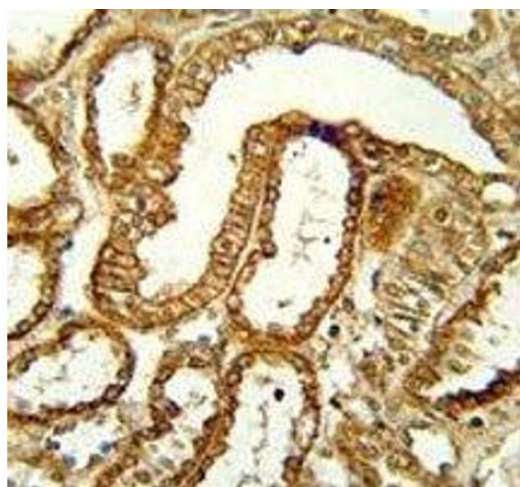
Storage: -20 °C

Storage Comment: Aliquot the CCR1 antibody and store frozen at -20°C or colder. Avoid repeated freeze-thaw cycles.



Flow Cytometry

Image 1. CCR1 antibody flow cytometric analysis of 293 cells (right histogram) compared to a negative control (left histogram). FITC-conjugated goat-anti-rabbit secondary Ab was used for the analysis.



Immunohistochemistry

Image 2. CCR1 antibody immunohistochemistry analysis in formalin fixed and paraffin embedded human kidney tissue.



Western Blotting

Image 3. Western blot analysis of CCR1 antibody and 293 lysate. Predicted size 40-45 kDa

Please check the [product details page](#) for more images. Overall 5 images are available for ABIN3030216.