



[Go to Product page](#)

Datasheet for ABIN3030236
anti-CTBP1 antibody (AA 413-440)

5 Images

Overview

| | |
|----------------------|-------------------------------------------------------|
| Quantity: | 0.4 mL |
| Target: | CTBP1 |
| Binding Specificity: | AA 413-440 |
| Reactivity: | Human, Mouse, Rat |
| Host: | Rabbit |
| Clonality: | Polyclonal |
| Conjugate: | This CTBP1 antibody is un-conjugated |
| Application: | Western Blotting (WB), ELISA, Immunofluorescence (IF) |

Product Details

| | |
|---------------|------------------------------------------------------------------------------------------------------------|
| Immunogen: | A portion of amino acids 413-440 from the human protein was used as the immunogen for this CTBP1 antibody. |
| Isotype: | Ig Fraction |
| Purification: | Antigen affinity purified |

Target Details

| | |
|-------------------|-------------------------------------------------------------------------------------------------------------------------------------------------------------------------------------------------------------------------------------------------------------------------------------|
| Target: | CTBP1 |
| Alternative Name: | CTBP1 (CTBP1 Products) |
| Background: | This gene encodes a protein that binds to the C-terminus of adenovirus E1A proteins. This phosphoprotein is a transcriptional repressor and may play a role during cellular proliferation. This protein and the product of a second closely related gene, CTBP2, can dimerize. Both |

Target Details

proteins can also interact with a polycomb group protein complex which participates in regulation of gene expression during development. Alternative splicing of transcripts from this gene results in multiple transcript variants.

UniProt: [Q13363](#)

Pathways: [Retinoic Acid Receptor Signaling Pathway](#)

Application Details

Application Notes: Titration of the CTBP1 antibody may be required due to differences in protocols and secondary/substrate sensitivity.\. Western blot: 1:1000,Immunofluorescence: 1:10-1:50

Restrictions: For Research Use only

Handling

Format: Liquid

Buffer: In 1X PBS, pH 7.4, with 0.09 % sodium azide

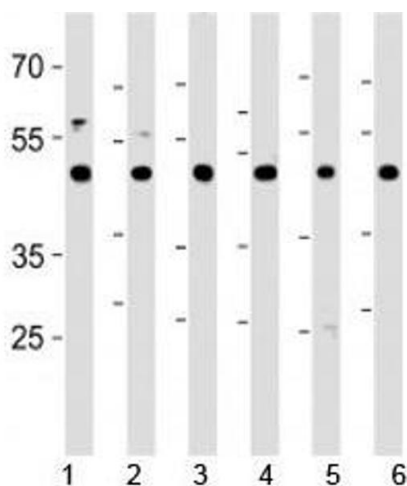
Preservative: Sodium azide

Precaution of Use: This product contains Sodium azide: a POISONOUS AND HAZARDOUS SUBSTANCE which should be handled by trained staff only.

Storage: -20 °C

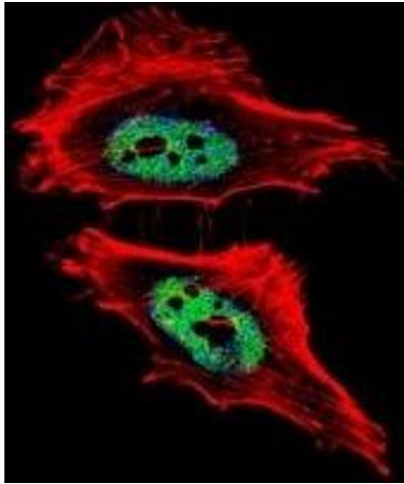
Storage Comment: Aliquot the CTBP1 antibody and store frozen at -20°C or colder. Avoid repeated freeze-thaw cycles.

Images



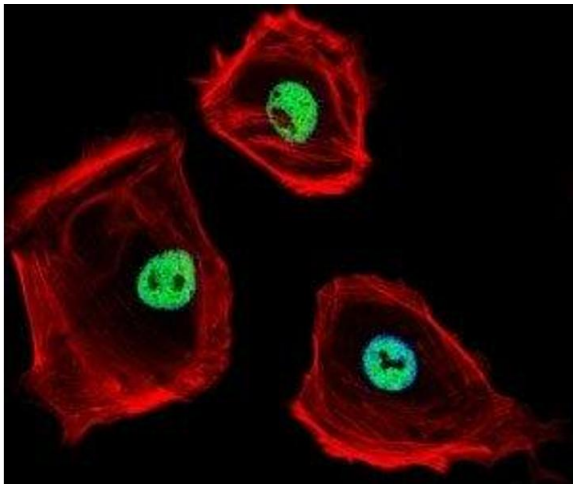
Western Blotting

Image 1. CTBP1 antibody western blot analysis in 1) HeLa, 2) HL-60, 3) Jurkat, 4) Raji cell lines, 5) mouse brain and 6) rat brain tissue lysate. Predicted molecular weight ~48 kDa.



Immunofluorescence

Image 2. Fluorescent confocal image of HeLa cells stained with CTBP1 antibody. Alexa Fluor 488 secondary was used (green). CTBP1 immunoreactivity is localized to the nucleus.



Immunofluorescence

Image 3. Fluorescent confocal image of SK-BR-3 cells stained with CTBP1 antibody. Alexa Fluor 488 secondary was used (green). CTBP1 immunoreactivity is localized to the nucleus.

Please check the [product details page](#) for more images. Overall 5 images are available for ABIN3030236.