

Datasheet for ABIN3030237
anti-CTBP1 antibody (AA 425-440)



[Go to Product page](#)

3 Images

Overview

Quantity:	100 µg
Target:	CTBP1
Binding Specificity:	AA 425-440
Reactivity:	Human, Mouse, Rat
Host:	Rabbit
Clonality:	Polyclonal
Conjugate:	This CTBP1 antibody is un-conjugated
Application:	Western Blotting (WB), Immunohistochemistry (Paraffin-embedded Sections) (IHC (p))

Product Details

Immunogen:	Amino acids 425-440 (QTVKPEADRDHASDQL-human) were used as the immunogen for this CtBP1 antibody.
Isotype:	IgG
Purification:	Antigen affinity

Target Details

Target:	CTBP1
Alternative Name:	CtBP1 (CTBP1 Products)
Background:	C-terminal-binding protein 1 is encoded by the CTBP1 gene. It binds to the C-terminus of adenovirus E1A proteins. It is a transcriptional repressor(corepressor) and may play a role during cellular proliferation. This protein and the product of a second closely related gene,

Target Details

CTBP2, can dimerize. CtBP1 and CtBP2 preferentially associate with the E1A via a 5 amino acid motif, PLDLS, to repress E1A induced oncogenesis and cellular transformation. CtBP1 is expressed from embryo to adult, but CtBP2 is mainly expressed during embryogenesis. During skeletal and T cell development, CtBP1 and -2 associate with the PLDLSL domain of delta EF1, a cellular zinc finger-homeodomain protein, and thereby enhances delta EF1-induced transcriptional silencing. In addition, CtBP complexes with CtIP, a 125 kDa protein that recognizes distinctly different protein motifs from CtBP. CtIP binds to the BRCT repeats within the breast cancer gene BRCA1 and enables CtBP to influence BRCA1 activity. Both proteins can also interact with a polycomb group protein complex which participates in regulation of gene expression during development. Alternative splicing of transcripts from this gene results in multiple transcript variants.

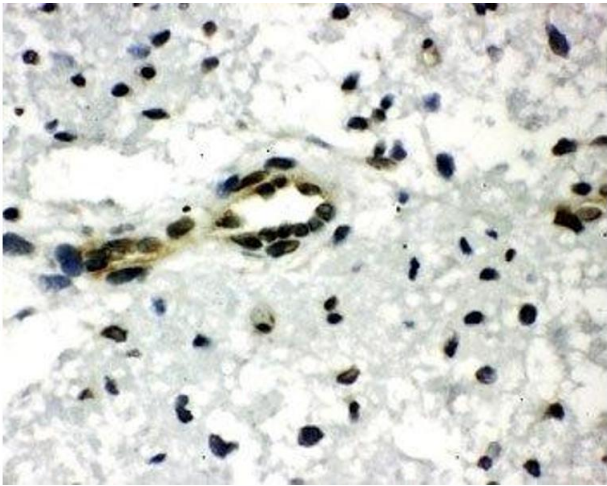
UniProt:	Q13363
Pathways:	Retinoic Acid Receptor Signaling Pathway

Application Details

Application Notes:	The stated application concentrations are suggested starting amounts. Titration of the CtBP1 antibody may be required due to differences in protocols and secondary/substrate sensitivity.\. Western blot: 0.5-1 µg/mL,IHC (Paraffin): 0.5-1 µg/mL
Restrictions:	For Research Use only

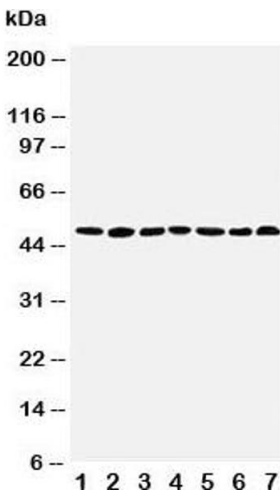
Handling

Buffer:	0.5 mg/mL if reconstituted with 0.2 mL sterile DI water
Storage:	-20 °C
Storage Comment:	After reconstitution, the CtBP1 antibody can be stored for up to one month at 4°C. For long-term, aliquot and store at -20°C. Avoid repeated freezing and thawing.



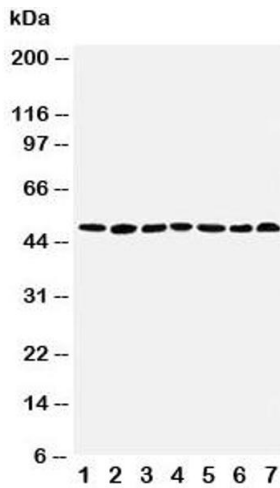
Immunohistochemistry

Image 1. IHC-P: CtBP1 antibody testing of rat brain tissue



Western Blotting

Image 2. Western blot testing of CtBP1 antibody and Lane 1: rat brain; 2: rat testis; 3: rat ovary; 4: U87; 5: SW620; 6: HT1080; 7: COLO320 cell lysate



Western Blotting

Image 3. Western blot testing of CtBP1 antibody and Lane 1: rat brain