

Datasheet for ABIN3030238
anti-CTBP2 antibody (AA 1-30)[Go to Product page](#)

3 Images

Overview

Quantity:	0.4 mL
Target:	CTBP2
Binding Specificity:	AA 1-30
Reactivity:	Human
Host:	Rabbit
Clonality:	Polyclonal
Conjugate:	This CTBP2 antibody is un-conjugated
Application:	Western Blotting (WB), Immunohistochemistry (IHC), ELISA

Product Details

Immunogen:	A portion of amino acids 1-30 from the human protein was used as the immunogen for this CTBP2 antibody.
Isotype:	Ig Fraction
Cross-Reactivity (Details):	Expected species reactivity: Mouse, Rat, Bovine, Xenopus
Purification:	Antigen affinity purified

Target Details

Target:	CTBP2
Alternative Name:	CTBP2 (CTBP2 Products)
Background:	This gene produces alternative transcripts encoding two distinct proteins. One protein is a

Target Details

transcriptional repressor, while the other isoform is a major component of specialized synapses known as synaptic ribbons. Both proteins contain a NAD⁺ binding domain similar to NAD⁺-dependent 2-hydroxyacid dehydrogenases. A portion of the 3' untranslated region was used to map this gene to chromosome 21q21.3, however, it was noted that similar loci elsewhere in the genome are likely. Blast analysis shows that this gene is present on chromosome 10. [provided by RefSeq].

UniProt: [P56545](#)

Application Details

Application Notes: Titration of the CTBP2 antibody may be required due to differences in protocols and secondary/substrate sensitivity.\. Western blot: 1:1000,IHC (Paraffin): 1:10-1:50

Restrictions: For Research Use only

Handling

Format: Liquid

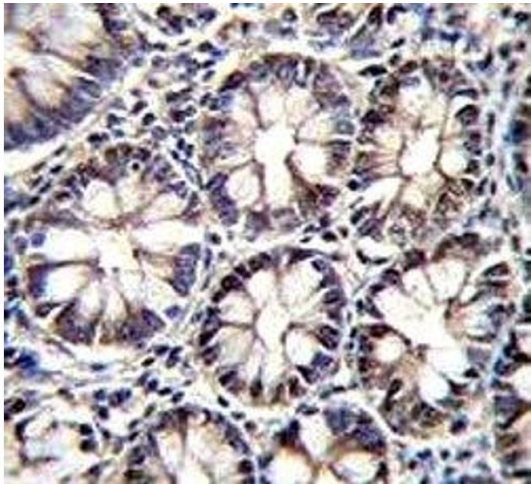
Buffer: In 1X PBS, pH 7.4, with 0.09 % sodium azide

Preservative: Sodium azide

Precaution of Use: This product contains Sodium azide: a POISONOUS AND HAZARDOUS SUBSTANCE which should be handled by trained staff only.

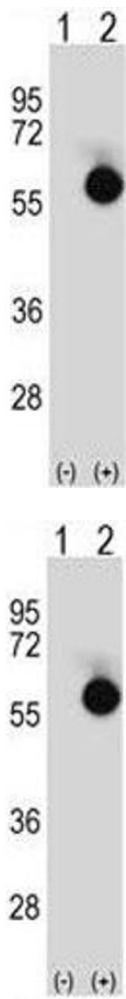
Storage: -20 °C

Storage Comment: Aliquot the CTBP2 antibody and store frozen at -20°C or colder. Avoid repeated freeze-thaw cycles.



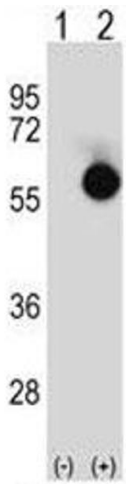
Immunohistochemistry

Image 1. CTBP2 antibody immunohistochemistry analysis in formalin fixed and paraffin embedded human rectum tissue.



Western Blotting

Image 2. Western blot analysis of CTBP2 antibody and 293 cell lysate either nontransfected (Lane 1) or transiently transfected (2) with the CTBP2 gene.



Western Blotting

Image 3. Western blot analysis of CTBP2 antibody and 293 cell lysate either nontransfected (Lane 1) or transiently transfected (2) with the CTBP2 gene.