

Datasheet for ABIN3030240
anti-C4B antibody (AA 655-684)[Go to Product page](#)

2 Images

Overview

Quantity:	0.4 mL
Target:	C4B (C4b)
Binding Specificity:	AA 655-684
Reactivity:	Mouse
Host:	Rabbit
Clonality:	Polyclonal
Conjugate:	This C4B antibody is un-conjugated
Application:	Western Blotting (WB), ELISA

Product Details

Immunogen:	A portion of amino acids 655-684 from the human protein was used as the immunogen for this C4B antibody.
Isotype:	Ig Fraction
Cross-Reactivity (Details):	Expected species reactivity: Human
Purification:	Antigen affinity purified

Target Details

Target:	C4B (C4b)
Alternative Name:	C4B (Complement 4b) (C4b Products)
Background:	This gene encodes the basic form of complement factor 4, part of the classical activation

Target Details

pathway. The protein is expressed as a single chain precursor which is proteolytically cleaved into a trimer of alpha, beta, and gamma chains prior to secretion. The trimer provides a surface for interaction between the antigen-antibody complex and other complement components. The alpha chain may be cleaved to release C4 anaphylatoxin, a mediator of local inflammation. Deficiency of this protein is associated with systemic lupus erythematosus. This gene localizes to the major histocompatibility complex (MHC) class III region on chromosome 6. Varying haplotypes of this gene cluster exist, such that individuals may have 1, 2, or 3 copies of this gene. In addition, this gene exists as a long form and a short form due to the presence or absence of a 6.4 kb endogenous HERV-K retrovirus in intron 9.

UniProt: [P0COL4](#)

Pathways: [Complement System](#)

Application Details

Application Notes: Titration of the C4B antibody may be required due to differences in protocols and secondary/substrate sensitivity.\. Western blot: 1:1000

Restrictions: For Research Use only

Handling

Format: Liquid

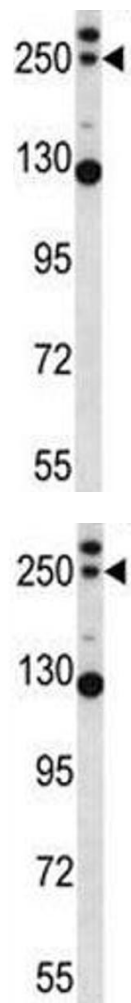
Buffer: In 1X PBS pH 7.4 with 0.09 % sodium azide

Preservative: Sodium azide

Precaution of Use: This product contains Sodium azide: a POISONOUS AND HAZARDOUS SUBSTANCE which should be handled by trained staff only.

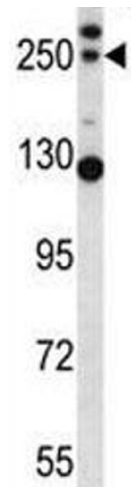
Storage: -20 °C

Storage Comment: Aliquot the C4B antibody and store frozen at -20°C or colder. Avoid repeated freeze-thaw cycles.



Western Blotting

Image 1. C4B antibody western blot analysis in mouse lung tissue lysate



Western Blotting

Image 2. C4B antibody western blot analysis in mouse lung tissue lysate